

Nur für Forschungszwecke

CD146/MCAM Monoklonaler Antikörper



Katalog-Nr.: 66153-1-Ig **1 Publikationen**

Allgemeine Informationen

Katalog-Nr.: 66153-1-Ig	GenBank-Zugangsnummer: BC056418	Reinigungsmethode: Protein-G-Reinigung
Größe: 150ul, Konzentration: 1053 µg/ml durch die Bradford-Methode mit BSA als Standard;	GeneID (NCBI): 4162	CloneNo.: 4D8A9
Wirt: Maus	Vollständiger Name: melanoma cell adhesion molecule	Empfohlene Verdünnungen: WB 1:2000-1:20000 IHC 1:1000-1:4000 IF 1:1000-1:4000
Isotyp: IgG1	Berechnete Masse: 646 aa, 72 kDa	
Immunogen Katalognummer: AG11855	Beobachtete Masse: 120 kDa	

Anwendungen

Geprüfte Anwendungen: FC, IF, IHC, WB, ELISA	Positivkontrollen: WB : HepG2-Zellen, A375-Zellen, HeLa-Zellen, humanes Plazenta-Gewebe, HUVEC-Zellen, L02-Zellen IHC : humanes Leberkarzinomgewebe, humanes Plazenta-Gewebe IF : humanes Leberkarzinomgewebe, HUVEC-Zellen
In Publikationen genannte Anwendungen: FC	
Getestete Reaktivität: Human	
Zitierte Arten: Human	
Hinweis-IHC: Antigenmaskierung mit TE-Puffer pH 9,0 empfohlen. (*) Wahlweise kann die Antigenmaskierung auch mit Citratpuffer pH 6,0 erfolgen.	

Hintergrundinformationen

CD146, also known as melanoma cell adhesion molecule (MCAM) or MUC18, originally identified as a biomarker of melanoma progression, is a transmembrane glycoprotein of 113-130 kDa, belonging to the immunoglobulin (Ig) superfamily (PMID: 8378324; 25993332). Structurally, it consists of five Ig domains, a transmembrane domain, and a cytoplasmic region. In normal adult tissue, CD146 is primarily expressed by vascular endothelium and smooth muscle. CD146 is a key cell adhesion protein in vascular endothelial cell activity and angiogenesis, and has been used as marker of circulating endothelium cells (CECs) (PMID: 19356677). In addition to the membrane-anchored form of CD146, a soluble form of CD146 (sCD146, 105 kDa) has also been found in human plasma and in the supernatant of cultured human endothelial cells (PMID: 9462829; 19229070; 16374253; 14597988). This antibody detects a band at approximately 120 kDa that corresponds to the molecular weight of glycosylated CD146. Treatment of lysates of HepG2 cells and L02 cells with PNGase F, which removes oligosaccharides from N-linked glycoproteins, led to a down-shift of the detected band.

Bemerkenswerte Veröffentlichungen

Verfasser	Pubmed ID	Journal	Anwendung
Xun Xi	33865812	Exp Cell Res	FC

Lagerung

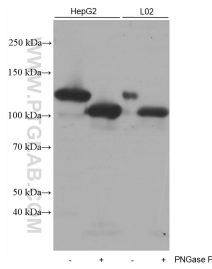
Lagerungsbedingungen:
Bei -20°C lagern. Nach dem Versand ein Jahr lang stabil
Lagerungspuffer:
PBS mit 0.02% Natriumazid und 50% Glycerin pH 7.3.
Aliquotieren ist nicht notwendig bei -20°C Lagerung

*** 20ul-Größen enthalten 0.1% BSA

For technical support and original validation data for this product please contact:
T: 1 (888) 4PTGLAB (1-888-478-4522) (toll free in USA), or 1(312) 455-8498 (outside USA)
E: proteintech@ptglab.com
W: ptglab.com

This product is exclusively available under Proteintech Group brand and is not available to purchase from any other manufacturer.

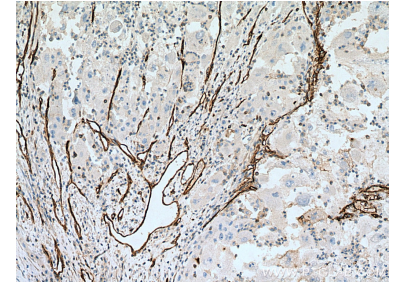
Ausgewählte Validierungsdaten



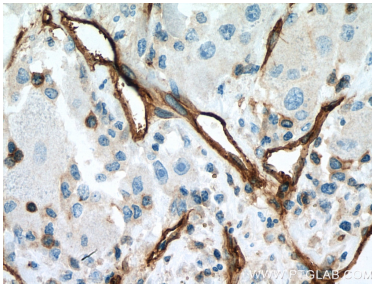
Untreated and PNGase F-treated lysates of HepG2 cells and L02 cells were subjected to SDS PAGE followed by western blot with 66153-1-Ig (CD146/MCAM antibody) at dilution of 1:20000 incubated at room temperature for 1.5 hours. PNGase F was obtained from Atagenix (cat.NO. ata808).



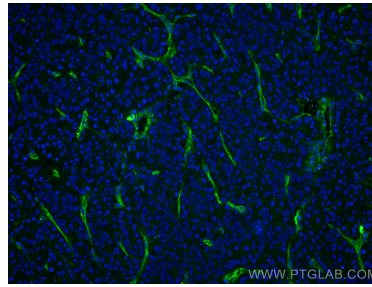
A375 cells were subjected to SDS PAGE followed by western blot with 66153-1-Ig (CD146/MCAM antibody) at dilution of 1:1000 incubated at room temperature for 1.5 hours.



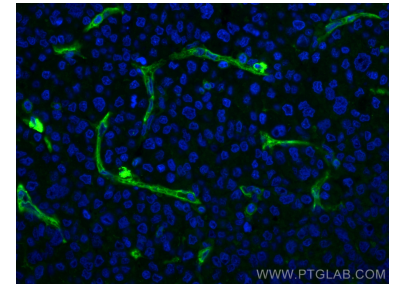
Immunohistochemical analysis of paraffin-embedded human liver cancer tissue slide using 66153-1-Ig (CD146/MCAM antibody) at dilution of 1:2000 (under 10x lens). Heat mediated antigen retrieval with Tris-EDTA buffer (pH 9.0).



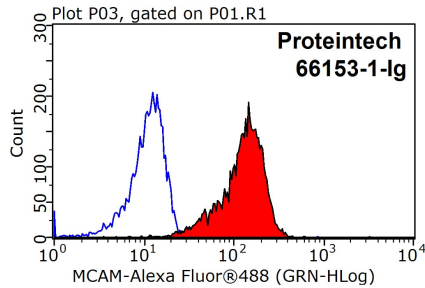
Immunohistochemical analysis of paraffin-embedded human liver cancer tissue slide using 66153-1-Ig (CD146/MCAM antibody) at dilution of 1:2000 (under 40x lens). Heat mediated antigen retrieval with Tris-EDTA buffer (pH 9.0).



Immunofluorescent analysis of (4% PFA) fixed human liver cancer tissue using CD146/MCAM antibody (66153-1-Ig, Clone: 4D8A9) at dilution of 1:2000 and CoraLite®488-Conjugated AffiniPure Goat Anti-Mouse IgG(H+L).



Immunofluorescent analysis of (4% PFA) fixed human liver cancer tissue using CD146/MCAM antibody (66153-1-Ig, Clone: 4D8A9) at dilution of 1:2000 and CoraLite®488-Conjugated AffiniPure Goat Anti-Mouse IgG(H+L).



1×10^6 HeLa cells were stained with 0.2ug CD146/MCAM antibody (66153-1-Ig, red) and control antibody (blue). Fixed with 90% MeOH blocked with 3% BSA (30 min). Alexa Fluor 488-conjugated AffiniPure Goat Anti-Mouse IgG(H+L) with dilution 1:100.