

Nur für Forschungszwecke

# Complement factor B Monoklonaler Antikörper



Katalog-Nr.:66154-1-Ig

## Allgemeine Informationen

**Katalog-Nr.:**  
66154-1-Ig

**Größe:**  
150ul , Konzentration: 600 µg/ml  
durch die Bradford-Methode mit BSA  
als Standard;

**Wirt:**  
Maus

**Isotyp:**  
IgM

**Immunogen Katalognummer:**  
AG19107

**GenBank-Zugangsnummer:**  
BC007990

**GeneID (NCBI):**  
629

**Vollständiger Name:**  
complement factor B

**Berechnete Masse:**  
86 kDa

**Beobachtete Masse:**  
93 kDa

**Reinigungsmethode:**  
Thiophiler Affinitätschromatograph

**CloneNo.:**  
8D2B6

**Empfohlene Verdünnungen:**  
WB 1:500-1:2000  
IHC 1:20-1:200  
IF 1:200-1:800

## Anwendungen

**Geprüfte Anwendungen:**  
IF, IHC, WB, ELISA

**Getestete Reaktivität:**  
Human

**Hinweis-IHC: Antigendemaskierung mit TE-Puffer pH 9,0 empfohlen. (\*) Wahlweise kann die Antigendemaskierung auch mit Citratpuffer pH 6,0 erfolgen.**

**Positivkontrollen:**

WB : humanes Blutgewebe,  
IHC : humanes Lebergewebe,  
IF : humanes Lebergewebe,

## Hintergrundinformationen

Complement factor B (CFB) is a component of the alternative pathway of complement activation. Complement factor B is cleaved into Ba and Bb by factor D in the presence of C3b. The active subunit Bb is a serine protease which associates with C3b to form the alternative pathway C3 convertase. Bb is involved in the proliferation of preactivated B lymphocytes, while Ba inhibits their proliferation.

## Lagerung

**Lagerungsbedingungen:**

Bei -20°C lagern. Nach dem Versand ein Jahr lang stabil

**Lagerungspuffer:**

PBS mit 0.02% Natriumazid und 50% Glycerin pH 7.3.

Aliquotieren ist nicht notwendig bei -20°C Lagerung

**\*\*\* 20ul-Größen enthalten 0.1% BSA**

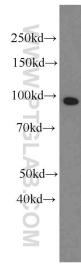
For technical support and original validation data for this product please contact:

T: 1 (888) 4PTGLAB (1-888-478-4522) (toll free in USA), or 1(312) 455-8498 (outside USA)

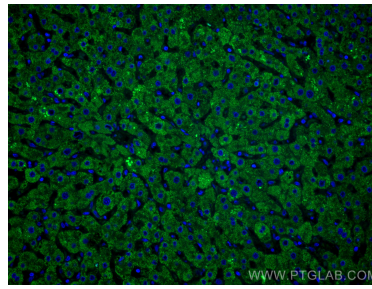
E: proteintech@ptglab.com  
W: ptglab.com

**This product is exclusively available under Proteintech Group brand and is not available to purchase from any other manufacturer.**

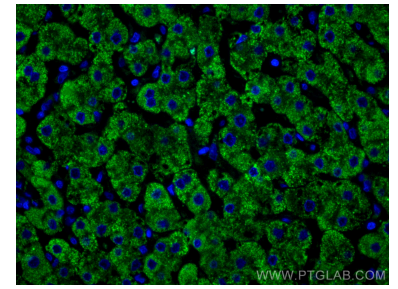
## Ausgewählte Validierungsdaten



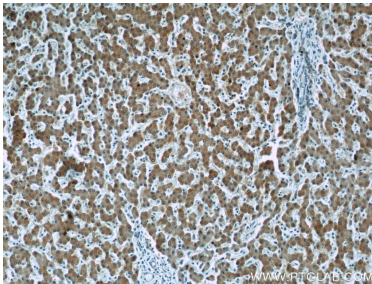
human blood were subjected to SDS PAGE followed by western blot with 66154-1-Ig (Complement factor B antibody) at dilution of 1:1000 incubated at room temperature for 1.5 hours.



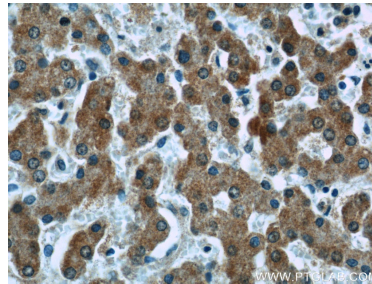
Immunofluorescent analysis of (4% PFA) fixed human liver tissue using Complement factor B antibody (66154-1-Ig, Clone: 8D2B6) at dilution of 1:400 and CoraLite®488-Conjugated AffiniPure Goat Anti-Mouse IgG(H+L).



Immunofluorescent analysis of (4% PFA) fixed human liver tissue using Complement factor B antibody (66154-1-Ig, Clone: 8D2B6) at dilution of 1:400 and CoraLite®488-Conjugated AffiniPure Goat Anti-Mouse IgG(H+L).



Immunohistochemical analysis of paraffin-embedded human liver tissue slide using 66154-1-Ig (Complement factor B antibody at dilution of 1:50 (under 10x lens).



Immunohistochemical analysis of paraffin-embedded human liver tissue slide using 66154-1-Ig (Complement factor B antibody at dilution of 1:50 (under 40x lens).