

Nur für Forschungszwecke

# C3/C3b/C3c Monoklonaler Antikörper



Katalog-Nr.: 66157-1-Ig **2 Publikationen**

## Allgemeine Informationen

<b>Katalog-Nr.:</b> 66157-1-Ig	<b>GenBank-Zugangsnummer:</b> BC150179	<b>Reinigungsmethode:</b> Protein-G-Reinigung
<b>Größe:</b> 150ul, Konzentration: 396 µg/ml von Nanodrop und 353 µg/ml durch die Bradford-Methode mit BSA als Standard;	<b>GeneID (NCBI):</b> 718	<b>CloneNo.:</b> 2A6B3
<b>Wirt:</b> Maus	<b>Vollständiger Name:</b> complement component 3	<b>Empfohlene Verdünnungen:</b> WB 1:1000-1:4000 IHC 1:20-1:200 IF 1:50-1:500
<b>Isotyp:</b> IgG1	<b>Berechnete Masse:</b> 1663 aa, 187 kDa	
<b>Immunogen Katalognummer:</b> AG15955	<b>Beobachtete Masse:</b> 115 kDa	

## Anwendungen

<b>Geprüfte Anwendungen:</b> IF, IHC, WB, ELISA	<b>Positivkontrollen:</b> WB: humanes Plasmagewebe, humanes Blutgewebe IHC: humanes Lebergewebe, IF: HepG2-Zellen,
<b>In Publikationen genannte Anwendungen:</b> IF, WB	
<b>Getestete Reaktivität:</b> Human	
<b>Zitierte Arten:</b> Ratte	
<b>Hinweis-IHC: Antigenmaskierung mit TE-Puffer pH 9,0 empfohlen. (*) Wahlweise kann die Antigenmaskierung auch mit Citratpuffer pH 6,0 erfolgen.</b>	

## Hintergrundinformationen

The complement system is an important effector which bridges the innate and adaptive immune systems (PMID: 20010915). The third component of complement, C3, plays a central role in the activation of the complement system. Its processing by C3 convertase is the central reaction in both classical and alternative complement pathways (PMID: 11414361). Human C3, composed of  $\alpha$  and  $\beta$  chains (115 and 75 kDa, respectively), is cleaved into C3a and C3b by C3 convertase. C3b is further cleaved into iC3b, C3c, C3dg and C3f. This antibody raised against 1314-1663 aa of human C3 protein recognize C3  $\alpha$  chain, C3b  $\alpha'$  chain, and C3c  $\alpha'$  chain fragment 2.

## Bemerkenswerte Veröffentlichungen

Verfasser	Pubmed ID	Journal	Anwendung
Qing Liu	35725619	J Neuroinflammation	WB, IF
Yichun Zou	30579855	Neurochem Int	WB

## Lagerung

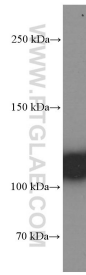
**Lagerungsbedingungen:**  
Bei -20°C lagern. Nach dem Versand ein Jahr lang stabil  
**Lagerungspuffer:**  
PBS mit 0.02% Natriumazid und 50% Glycerin pH 7.3.  
Aliquotieren ist nicht notwendig bei -20°C Lagerung

\*\*\* 20ul-Größen enthalten 0.1% BSA

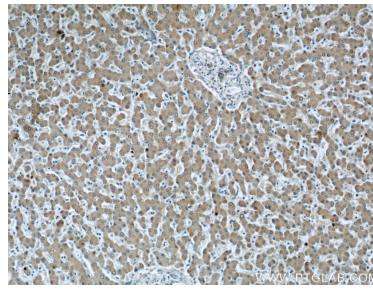
For technical support and original validation data for this product please contact:  
T: 1 (888) 4PTGLAB (1-888-478-4522) (toll free in USA), or 1(312) 455-8498 (outside USA)  
E: proteintech@ptglab.com  
W: ptglab.com

This product is exclusively available under Proteintech Group brand and is not available to purchase from any other manufacturer.

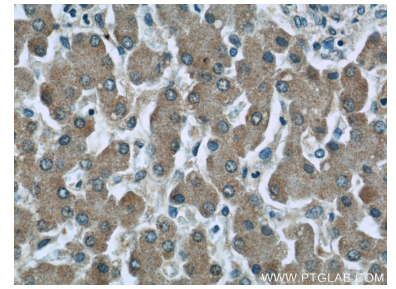
## Ausgewählte Validierungsdaten



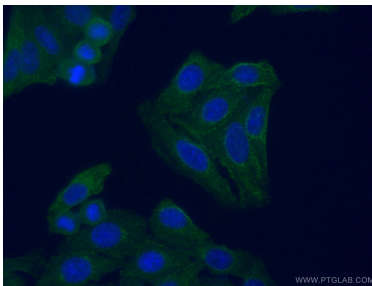
human plasma were subjected to SDS PAGE followed by western blot with 66157-1-Ig (C3/C3b/C3c antibody) at dilution of 1:2000 incubated at room temperature for 1.5 hours.



Immunohistochemical analysis of paraffin-embedded human liver tissue slide using 66157-1-Ig (C3/C3b/C3c antibody) at dilution of 1:50 (under 10x lens).



Immunohistochemical analysis of paraffin-embedded human liver tissue slide using 66157-1-Ig (C3/C3b/C3c antibody) at dilution of 1:50 (under 40x lens).



Immunofluorescent analysis of (-20°C Ethanol) fixed HepG2 cells using 66157-1-Ig (C3/C3b/C3c antibody) at dilution of 1:100 and Alexa Fluor 488-Conjugated AffiniPure Goat Anti-Mouse IgG(H+L).