

Nur für Forschungszwecke

# NAPRT1 Monoklonaler Antikörper

Katalog-Nr.:66159-1-Ig

Vorgestelltes Produkt

2 Publikationen



## Allgemeine Informationen

<b>Katalog-Nr.:</b> 66159-1-Ig	<b>GenBank-Zugangsnummer:</b> BC032466	<b>Reinigungsmethode:</b> Protein-A-Reinigung
<b>Größe:</b> 150ul , Konzentration: 2500 µg/ml von93100 Nanodrop und 1467 µg/ml durch die Bradford-Methode mit BSA als Standard;	<b>GeneID (NCBI):</b> 593100	<b>CloneNo.:</b> 5D8H10
<b>Wirt:</b> Maus	<b>Vollständiger Name:</b> nicotinate phosphoribosyltransferase domain containing 1	<b>Empfohlene Verdünnungen:</b> WB 1:5000-1:50000 IHC 1:20-1:200 IF 1:50-1:500
<b>Isotyp:</b> IgG2a	<b>Berechnete Masse:</b> 514 aa, 55 kDa	
<b>Immunogen Katalognummer:</b> AG4265	<b>Beobachtete Masse:</b> 51 kDa	

## Anwendungen

### Geprüfte Anwendungen:

IF, IHC, WB, ELISA

### In Publikationen genannte Anwendungen:

WB

### Getestete Reaktivität:

Human, Maus

### Zitierte Arten:

Human

**Hinweis-IHC: Antigenmaskierung mit TE-Puffer pH 9,0 empfohlen. (\*) Wahlweise kann die Antigenmaskierung auch mit Citratpuffer pH 6,0 erfolgen.**

### Positivkontrollen:

**WB :** THP-1-Zellen, HEK-293-Zellen, HeLa-Zellen, HepG2-Zellen, Jurkat-Zellen, K-562-Zellen, LNCaP-Zellen

**IHC :** humanes Dünndarmgewebe,

**IF :** HeLa-Zellen,

## Hintergrundinformationen

Nicotinic acid (NA) is a coenzyme in cellular redox reactions, and is an essential component of metabolic pathways in all living cells. NAPRT1 (Nicotinate phosphoribosyltransferase) is essential for increasing cellular NAD levels and, thus, to prevent oxidative stress of cells. NAPRT1 converts Nicotinic acid (NA; niacin) to NA mononucleotide (NaMN), which is then converted to NA adenine dinucleotide (NaAD), and finally to nicotinamide adenine dinucleotide (NAD).

## Bemerkenswerte Veröffentlichungen

Verfasser	Pubmed ID	Journal	Anwendung
Antonella Managò	31511522	Nat Commun	WB
Nathan R Fons	31439867	Nat Commun	WB

## Lagerung

### Lagerungsbedingungen:

Bei -20°C lagern. Nach dem Versand ein Jahr lang stabil

### Lagerungspuffer:

PBS mit 0.02% Natriumazid und 50% Glycerin pH 7.3.

Aliquotieren ist nicht notwendig bei -20°C Lagerung

\*\*\* 20ul-Größen enthalten 0.1% BSA

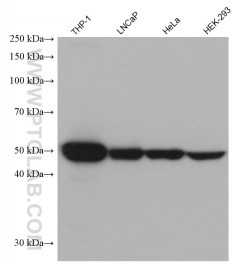
For technical support and original validation data for this product please contact:

T: 1 (888) 4PTGLAB (1-888-478-4522) (toll free in USA), or 1(312) 455-8498 (outside USA)

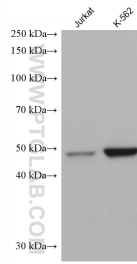
E: proteintech@ptglab.com  
W: ptglab.com

This product is exclusively available under Proteintech Group brand and is not available to purchase from any other manufacturer.

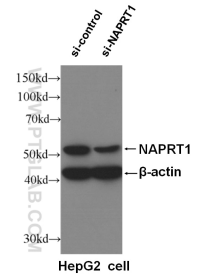
## Ausgewählte Validierungsdaten



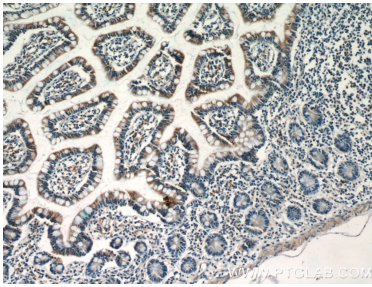
Various lysates were subjected to SDS PAGE followed by western blot with 66159-1-Ig (NAPRT1 antibody) at dilution of 1:20000 incubated at room temperature for 1.5 hours.



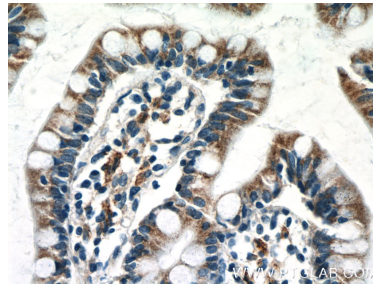
Various lysates were subjected to SDS PAGE followed by western blot with 66159-1-Ig (NAPRT1 antibody) at dilution of 1:20000 incubated at room temperature for 1.5 hours.



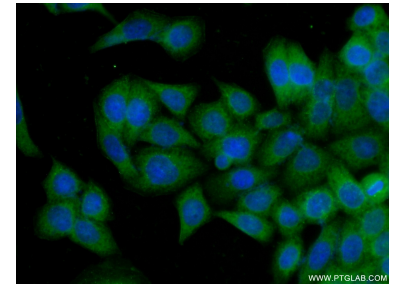
WB result of NAPRT1 antibody (66159-1-Ig, 1:6000) with si-Control and si-NAPRT1 transfected HepG2 cells.



Immunohistochemical analysis of paraffin-embedded human small intestine tissue slide using 66159-1-Ig (NAPRT1 Antibody) at dilution of 1:50 (under 10x lens).



Immunohistochemical analysis of paraffin-embedded human small intestine tissue slide using 66159-1-Ig (NAPRT1 Antibody) at dilution of 1:50 (under 40x lens).



Immunofluorescent analysis of (-20°C Ethanol) fixed HeLa cells using 66159-1-Ig (NAPRT1 antibody) at dilution of 1:100 and Alexa Fluor 488-conjugated AffiniPure Goat Anti-Mouse IgG(H+L).