

Allgemeine Informationen

Katalog-Nr.: 66166-1-Ig	GenBank-Zugangsnummer: BC110341	Reinigungsmethode: Protein-A-Reinigung
Größe: 150ul, Konzentration: 2733 µg/ml von6908 Nanodrop und 1500 µg/ml durch die Bradford-Methode mit BSA als Standard;	GeneID (NCBI): Vollständiger Name: TATA box binding protein	CloneNo.: 2H3B2
Wirt: Maus	Berechnete Masse: 338 aa, 38 kDa	Empfohlene Verdünnungen: WB 1:20000-1:100000 IP 0.5-4.0 ug für IP und 1:500-1:1000 für WB
Isotyp: IgG2a	Beobachtete Masse: mouse/rat 33-36 kDa and human 37- 43kDa	IHC 1:325-1:1300 IF 1:200-1:800
Immunogen Katalognummer: AG12383		

Anwendungen

Geprüfte Anwendungen:

FC, IF, IHC, IP, WB, ELISA

In Publikationen genannte Anwendungen:

WB

Getestete Reaktivität:

Hausschwein, Human, Maus, Ratte

Zitierte Arten:

Hausschwein, Human, Maus, Ratte

Hinweis-IHC: Antigenmaskierung mit TE-Puffer pH 9,0 empfohlen. (*) Wahlweise kann die Antigenmaskierung auch mit Citratpuffer pH 6,0 erfolgen.

Positivkontrollen:

WB: LNCaP-Zellen, Hausschwein-Lebergewebe, HEK-293-Zellen, HeLa-Zellen, HepG2-Zellen, Jurkat-Zellen, K-562-Zellen, Neuro-2a-Zellen, NIH/3T3-Zellen

IP: HEK-293-Zellen,

IHC: humanes Leberkarzinomgewebe, humanes Mammakarzinomgewebe

IF: A431-Zellen, HeLa-Zellen

Hintergrundinformationen

The TATA binding protein (TBP) is a transcription factor that binds specifically to a DNA sequence TATA box. This DNA sequence is found about 25-30 base pairs upstream of the transcription start site in some eukaryotic gene promoters. TBP, along with a variety of TBP-associated factors, make up the TFIID, a general transcription factor that in turn makes up part of the RNA polymerase II preinitiation complex. As one of the few proteins in the preinitiation complex that binds DNA in a sequence-specific manner, it helps position RNA polymerase II over the transcription start site of the gene. However, it is estimated that only 10-20% of human promoters have TATA boxes. Therefore, TBP is probably not the only protein involved in positioning RNA polymerase II. This antibody detects human TBP (~40 kDa) and mouse/rat Tbp (~35 kDa).

Bemerkenswerte Veröffentlichungen

Verfasser	Pubmed ID	Journal	Anwendung
Alexander K Kunisky	34644577	Cell Rep	WB
Jing Lu	36436207	Psychiatry Clin Neurosci	WB
Yu Chen	31770366	PLoS Biol	WB

Lagerung

Lagerungsbedingungen:

Bei -20°C lagern. Nach dem Versand ein Jahr lang stabil

Lagerungspuffer:

PBS mit 0.02% Natriumazid und 50% Glycerin pH 7.3.

Aliquotieren ist nicht notwendig bei -20°C Lagerung

*** 20ul-Größen enthalten 0.1% BSA

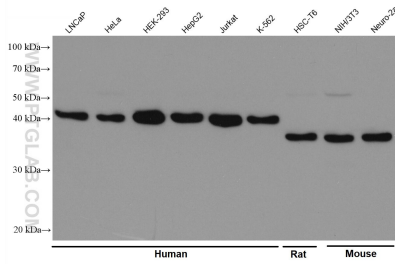
For technical support and original validation data for this product please contact:

T: 1 (888) 4PTGLAB (1-888-478-4522) (toll free in USA), or 1(312) 455-8498 (outside USA)

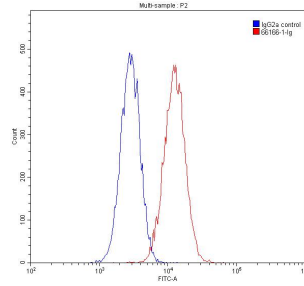
E: proteintech@ptglab.com
W: ptglab.com

This product is exclusively available under Proteintech Group brand and is not available to purchase from any other manufacturer.

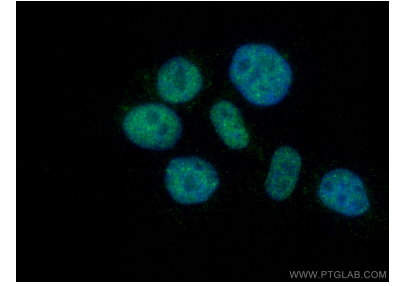
Ausgewählte Validierungsdaten



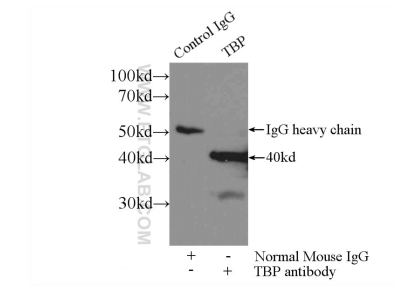
Various lysates were subjected to SDS PAGE followed by western blot with 66166-1-Ig (TBP antibody) at dilution of 1:200000 incubated at room temperature for 1.5 hours.



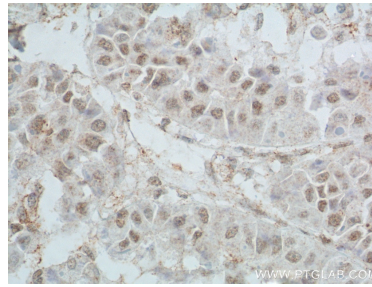
1×10^6 HepG2 cells were stained with 0.20ug TBP antibody (66166-1-Ig, red) and control antibody (blue). Fixed with 90% MeOH.



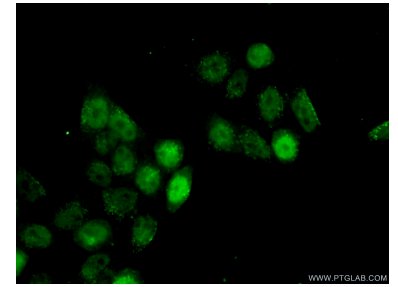
Immunofluorescent analysis of (4% PFA) fixed A431 cells using TBP antibody (66166-1-Ig, Clone: 2H3B2) at dilution of 1:400 and CoraLite®488-Conjugated AffiniPure Goat Anti-Mouse IgG(H+L).



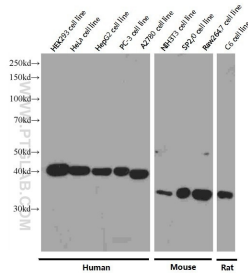
IP Result of anti-TBP (IP:66166-1-Ig, 3ug; Detection:66166-1-Ig 1:800) with HEK-293 cells lysate 1800ug.



Immunohistochemical analysis of paraffin-embedded human liver cancer tissue slide using 66166-1-Ig (TBP Antibody) at dilution of 1:650 (under 40x lens). Heat mediated antigen retrieval with Tris-EDTA buffer (pH 9.0).



Immunofluorescent analysis of (10% Formaldehyde) fixed HeLa cells using 66166-1-Ig(TBP antibody) at dilution of 1:100 and Alexa Fluor 488-conjugated AffiniPure Goat Anti-Mouse IgG(H+L).



Western blot analysis of TBP in various cell lines using Proteintech antibody 66166-1-Ig at a dilution of 1:8000 incubated at room temperature for 1.5 hours.