

Nur für Forschungszwecke

Caspase 9/p35/p10 Monoklonaler Antikörper



Katalog-Nr.: 66169-1-Ig **86 Publikationen**

Allgemeine Informationen

Katalog-Nr.: 66169-1-Ig	GenBank-Zugangsnummer: BC002452	Reinigungsmethode: Protein-A-Reinigung
Größe: 150ul, Konzentration: 2100 µg/ml von 842 Nanodrop und 1500 µg/ml durch die Bradford-Methode mit BSA als Standard;	GeneID (NCBI): 187G2	CloneNo.: 1B7G2
Wirt: Maus	Vollständiger Name: caspase 9, apoptosis-related cysteine peptidase	Empfohlene Verdünnungen: WB 1:500-1:2000 IP 0.5-4.0 µg für IP und 1:500-1:1000 für WB
Isotyp: IgG2b	Berechnete Masse: 46 kDa	IHC 1:100-1:400
Immunogen Katalognummer: AG20813	Beobachtete Masse: 46 kDa, 35 kDa	IF 1:50-1:500

Anwendungen

Geprüfte Anwendungen: IF, IHC, IP, WB, ELISA	Positivkontrollen: WB : HeLa-Zellen, Jurkat-Zellen
In Publikationen genannte Anwendungen: ELISA, IF, IHC, WB	IP : HeLa-Zellen,
Getestete Reaktivität: Human, Maus	IHC : humanes Lymphomgewebe, humanes Pankreasgewebe
Zitierte Arten: Hausschwein, Human, Maus, Ratte	IF : HeLa-Zellen,

Hinweis-IHC: Antigenmaskierung mit TE-Puffer pH 9,0 empfohlen. (*) Wahlweise kann die Antigenmaskierung auch mit Citratpuffer pH 6,0 erfolgen.

Hintergrundinformationen

Caspase 9, apoptosis-related cysteine protease (CASP9, synonyms: MCH6, APAF3, APAF-3, ICE-LAP6, CASPASE-9c) is a member of the cysteine-aspartic acid protease (caspase) family. Sequential activation of caspases plays a central role in the execution-phase of cell apoptosis. Caspases exist as inactive proenzymes which undergo proteolytic processing at conserved aspartic residues to produce 2 subunits, large and small, that dimerize to form the active enzyme. Caspase 9 is processed by caspase APAF1; this step is thought to be one of the earliest in the caspase activation cascade. In recent years, the localization of caspase9 was a focus of interest. Beside its cytoplasmic distribution, a very extensive localization study was done on rat brain tissue, where caspase9 was found located predominantly in the nucleus and to a lesser extent in the cytoplasm [PMID: 15541731].

Bemerkenswerte Veröffentlichungen

Verfasser	Pubmed ID	Journal	Anwendung
Dan Mo	31568784	Eur J Pharmacol	WB
Na Jiang	32975326	Cell Prolif	WB
Xinbo Wu	32914567	J Cell Mol Med	WB

Lagerung

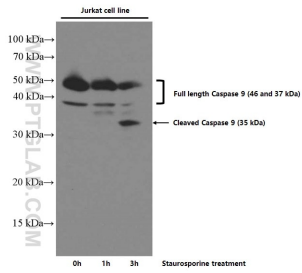
Lagerungsbedingungen:
Bei -20°C lagern. Nach dem Versand ein Jahr lang stabil
Lagerungspuffer:
PBS mit 0.02% Natriumazid und 50% Glycerin pH 7.3.
Aliquotieren ist nicht notwendig bei -20°C Lagerung

*** 20ul-Größen enthalten 0.1% BSA

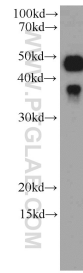
For technical support and original validation data for this product please contact:
T: 1 (888) 4PTGLAB (1-888-478-4522) (toll free in USA), or 1(312) 455-8498 (outside USA)
E: proteintech@ptglab.com
W: ptglab.com

This product is exclusively available under Proteintech Group brand and is not available to purchase from any other manufacturer.

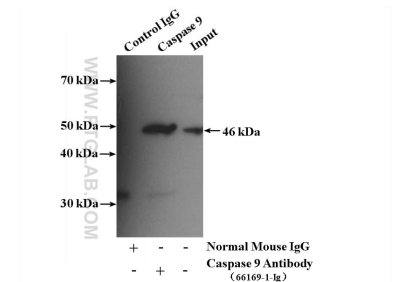
Ausgewählte Validierungsdaten



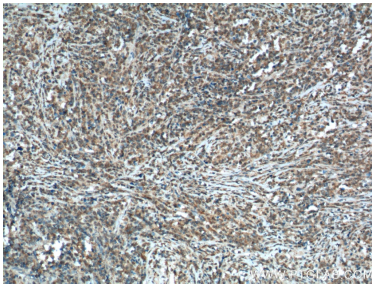
Untreated and Staurosporine treated Jurkat cells were subjected to SDS PAGE followed by western blot with 66169-1-Ig (Caspase 9/p35/p10 antibody) at dilution of 1:5000 incubated at room temperature for 1.5 hours.



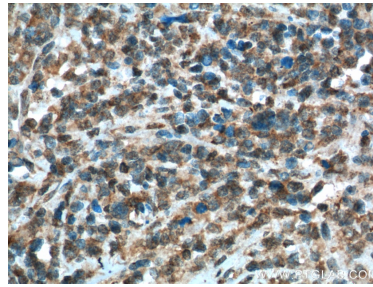
HeLa cells were subjected to SDS PAGE followed by western blot with 66169-1-Ig (Caspase 9/p35/p10 antibody) at dilution of 1:1000 incubated at room temperature for 1.5 hours.



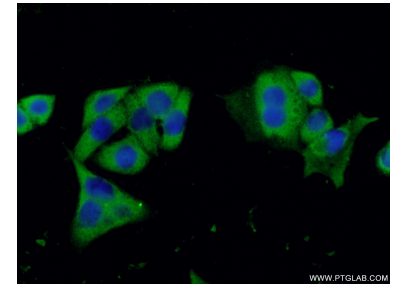
IP Result of anti-Caspase 9/p35/p10 (IP:66169-1-Ig, 5ug; Detection:66169-1-Ig 1:500) with HeLa cells lysate 3200ug.



Immunohistochemical analysis of paraffin-embedded human lymphoma tissue slide using 66169-1-Ig (Caspase 9/p35/p10 antibody) at dilution of 1:200 (under 10x lens). Heat mediated antigen retrieval with Tris-EDTA buffer (pH 9.0).



Immunohistochemical analysis of paraffin-embedded human lymphoma tissue slide using 66169-1-Ig (Caspase 9/p35/p10 antibody) at dilution of 1:200 (under 40x lens). Heat mediated antigen retrieval with Tris-EDTA buffer (pH 9.0).



Immunofluorescent analysis of (-20°C Ethanol) fixed HeLa cells using 66169-1-Ig(Caspase 9/p35/p10 antibody) at dilution of 1:100 and Alexa Fluor 488-conjugated AffiniPure Goat Anti-Mouse IgG(H+L).