

Nur für Forschungszwecke

MSH6 Monoklonaler Antikörper

Katalog-Nr.:66172-1-Ig

Vorgestelltes Produkt

5 Publikationen



Allgemeine Informationen

Katalog-Nr.:

66172-1-Ig

Größe:

150ul , Konzentration: 1027 µg/ml durch die Bradford-Methode mit BSA als Standard;

Wirt:

Maus

Isotyp:

IgG2a

Immunogen Katalognummer:

AG12645

GenBank-Zugangsnummer:

BC004246

GeneID (NCBI):

2956

Vollständiger Name:

mutS homolog 6 (E. coli)

Berechnete Masse:

153 kDa

Beobachtete Masse:

160 kDa

Reinigungsmethode:

Protein-A-Reinigung

CloneNo.:

2E10B2

Empfohlene Verdünnungen:

WB 1:500-1:2000

IP 0.5-4.0 µg für IP und 1:500-1:1000

für WB

IHC 1:500-1:2000

IF 1:50-1:500

Anwendungen

Geprüfte Anwendungen:

FC, IF, IHC, IP, WB, ELISA

In Publikationen genannte Anwendungen:

IHC, WB

Getestete Reaktivität:

Human, Maus

Zitierte Arten:

Human, Maus

Hinweis-IHC: Antigenmaskierung mit TE-Puffer pH 9,0 empfohlen. (*) Wahlweise kann die Antigenmaskierung auch mit Citratpuffer pH 6,0 erfolgen.

Positivkontrollen:

WB : HEK-293-Zellen, HEK-293

IP : HEK-293-Zellen,

IHC : humanes Kolonkarzinomgewebe,

IF : HepG2-Zellen,

Hintergrundinformationen

MSH6, also named as DNA mismatch repair protein Msh6 or GTMBP, is a 1360 amino acid protein, which contains one PWWP domain and belongs to the DNA mismatch repair MutS family. MSH6 localizes in the nucleus and is a component of the post-replicative DNA mismatch repair system. Msh2 and Msh6 form a protein complex required to repair mismatches generated during DNA replication.

Bemerkenswerte Veröffentlichungen

Verfasser	Pubmed ID	Journal	Anwendung
Takashi Minamisaka	35614379	Neuropathology	IHC
Jun Zhu	32396667	J Surg Oncol	IHC
Dingkong Liang	29352574	Surgery	IHC

Lagerung

Lagerungsbedingungen:

Bei -20°C lagern. Nach dem Versand ein Jahr lang stabil

Lagerungspuffer:

PBS mit 0.02% Natriumazid und 50% Glycerin pH 7.3.

Aliquotieren ist nicht notwendig bei -20°C Lagerung

*** 20ul-Größen enthalten 0.1% BSA

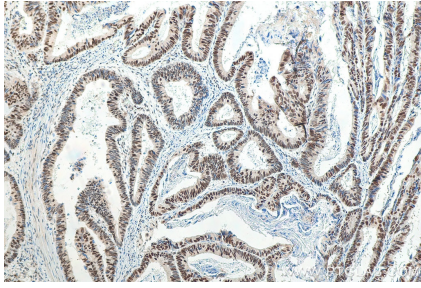
For technical support and original validation data for this product please contact:

T: 1 (888) 4PTGLAB (1-888-478-4522) (toll free in USA), or 1(312) 455-8498 (outside USA)

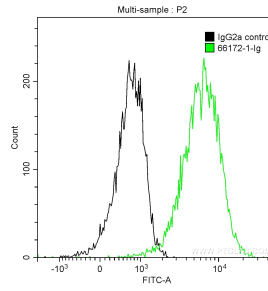
E: proteintech@ptglab.com
W: ptglab.com

This product is exclusively available under Proteintech Group brand and is not available to purchase from any other manufacturer.

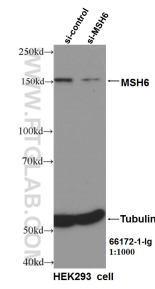
Ausgewählte Validierungsdaten



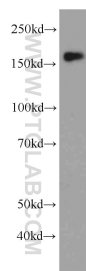
Immunohistochemical analysis of paraffin-embedded human colon cancer tissue slide using 66172-1-Ig (MSH6 antibody) at dilution of 1:1000 (under 10x lens). Heat mediated antigen retrieval with Tris-EDTA buffer (pH 9.0).



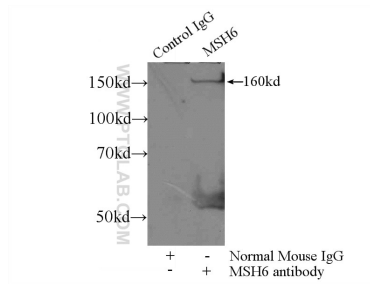
1X10⁶ HEK-293 cells were intracellularly stained with 0.2 ug Anti-Human MSH6 (66172-1-Ig, Clone:2E10B2) and CoraLite®488-Conjugated AffiniPure Goat Anti-Mouse IgG(H+L) at dilution 1:1000 (green), and 0.2 ug Mouse IgG2a Isotype Control (66360-2-Ig, Clone: K11A1B2A2) (black). Cells were fixed with 4% PFA and permeabilized with 0.1% TritonX-100.



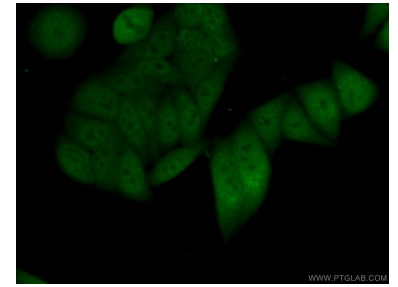
WB result of MSH6 antibody (66172-1-Ig, 1:1000) with si-Control and si-MSH6 transfected HEK293 cells.



HEK-293 cells were subjected to SDS PAGE followed by western blot with 66172-1-Ig (MSH6 Antibody) at dilution of 1:1000 incubated at room temperature for 1.5 hours.



IP Result of anti-MSH6 (IP:66172-1-Ig, 4ug; Detection:66172-1-Ig 1:600) with HEK-293 cells lysate 1800ug.



Immunofluorescent analysis of (10% Formaldehyde) fixed HepG2 cells using 66172-1-Ig (MSH6 antibody) at dilution of 1:50 and Alexa Fluor 488-conjugated AffiniPure Goat Anti-Mouse IgG(H+L).