

Nur für Forschungszwecke

CNPY2, MSAP Monoklonaler Antikörper



Katalog-Nr.: 66173-1-Ig

Vorgestelltes Produkt

Allgemeine Informationen

Katalog-Nr.: 66173-1-Ig	GenBank-Zugangsnummer: BC065015	Reinigungsmethode: Protein-A-Reinigung
Größe: 150ul, Konzentration: 1500 µg/ml von 10330 Nanodrop und 1133 µg/ml durch die Bradford-Methode mit BSA als Standard;	GeneID (NCBI): canopy 2 homolog (zebrafish)	CloneNo.: 1G8G11
Wirt: Maus	Vollständiger Name: canopy 2 homolog (zebrafish)	Empfohlene Verdünnungen: WB 1:2000-1:10000 IHC 1:50-1:500 IF 1:50-1:500
Isotyp: IgG2b	Berechnete Masse: 21 kDa	
Immunogen Katalognummer: AG6363	Beobachtete Masse: 18-21 kDa	

Anwendungen

Geprüfte Anwendungen:

FC, IF, IHC, WB, ELISA

Getestete Reaktivität:

Hausschwein, Human, Maus, Ratte

Hinweis-IHC: Antigendemaskierung mit TE-Puffer pH 9,0 empfohlen. (*) Wahlweise kann die Antigendemaskierung auch mit Citratpuffer pH 6,0 erfolgen.

Positivkontrollen:

WB: A549-Zellen, Hausschwein-Lebergewebe, HeLa-Zellen, HepG2-Zellen, humanes Plazenta-Gewebe, Jurkat-Zellen, K-562-Zellen, LNCaP-Zellen, NIH/3T3-Zellen, Rattenlebergewebe

IHC: humanes Pankreaskarzinomgewebe,

IF: HepG2-Zellen,

Hintergrundinformationen

CNPY2, also named as MSAP, TMEM4 and ZSIG9, is a positive regulator of neurite outgrowth. It interacts with the ezrin-radixin-moesin (ERM)-like myosin regulatory light chain-interacting protein (MIR), and the two proteins are co-localized in cell lines and in primary neurons. CNPY2 can stabilize MRLC and thus bring about an increase in neurite outgrowth. (PMID: 12826659) This antibody is specific to CNPY2

Lagerung

Lagerungsbedingungen:

Bei -20°C lagern. Nach dem Versand ein Jahr lang stabil

Lagerungspuffer:

PBS mit 0.02% Natriumazid und 50% Glycerin pH 7.3.

Aliquotieren ist nicht notwendig bei -20°C Lagerung

*** 20ul-Größen enthalten 0.1% BSA

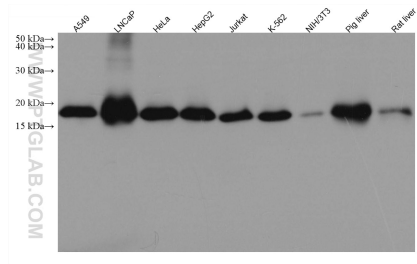
For technical support and original validation data for this product please contact:

T: 1 (888) 4PTGLAB (1-888-478-4522) (toll free in USA), or 1(312) 455-8498 (outside USA)

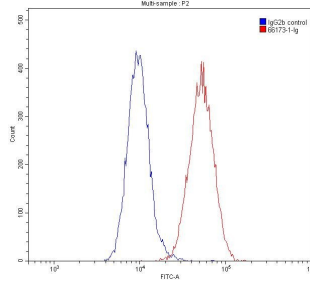
E: proteintech@ptglab.com
W: ptglab.com

This product is exclusively available under Proteintech Group brand and is not available to purchase from any other manufacturer.

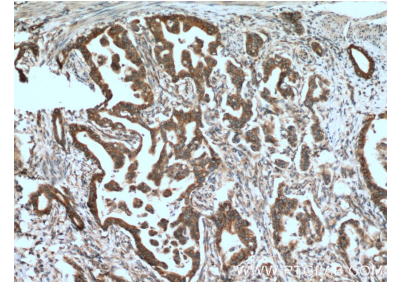
Ausgewählte Validierungsdaten



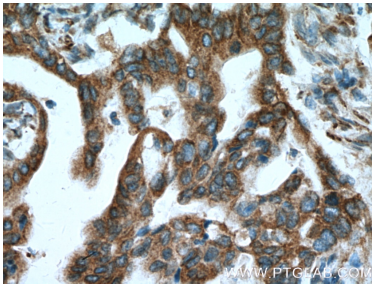
Various lysates were subjected to SDS PAGE followed by western blot with 66173-1-Ig (CNPY2, MSAP antibody) at dilution of 1:5000 incubated at room temperature for 1.5 hours.



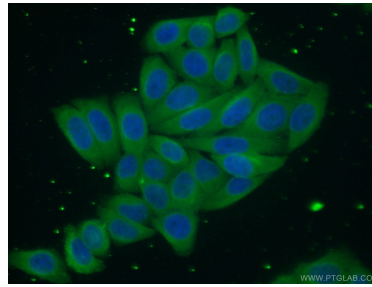
1×10^6 HepG2 cells were stained with 0.20ug CNPY2, MSAP antibody (66173-1-Ig, red) and control antibody (blue). Fixed with 90% MeOH.



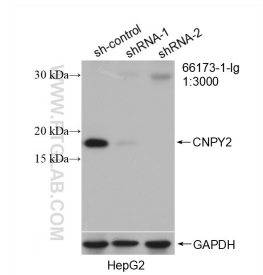
Immunohistochemical analysis of paraffin-embedded human pancreas cancer tissue slide using 66173-1-Ig (CNPY2, MSAP antibody at dilution of 1:500 (under 10x lens). Heat mediated antigen retrieval with Tris-EDTA buffer (pH 9.0).



Immunohistochemical analysis of paraffin-embedded human pancreas cancer tissue slide using 66173-1-Ig (CNPY2, MSAP antibody at dilution of 1:500 (under 40x lens). Heat mediated antigen retrieval with Tris-EDTA buffer (pH 9.0).



Immunofluorescent analysis of (10% Formaldehyde) fixed HepG2 cells using 66173-1-Ig(CNPY2, MSAP antibody) at dilution of 1:50 and Alexa Fluor 488-conjugated AffiniPure Goat Anti-mouse IgG(H+L).



WB result of CNPY2, MSAP antibody (66173-1-Ig; 1:3000; incubated at room temperature for 1.5 hours) with sh-Control and sh-CNPY2, MSAP transfected HepG2 cells.