

Allgemeine Informationen

Katalog-Nr.: 66182-1-Ig	GenBank-Zugangsnummer: BC007082	Reinigungsmethode: Protein-G-Reinigung
Größe: 150ul , Konzentration: 1800 µg/ml von6605 Nanodrop und 1520 µg/ml durch die Bradford-Methode mit BSA als Standard;	GeneID (NCBI): 1F3D6	CloneNo.: 1F3D6
Wirt: Maus	Vollständiger Name: SWI/SNF related, matrix associated, actin dependent regulator of chromatin, subfamily e, member 1	Empfohlene Verdünnungen: WB 1:500-1:2000 IHC 1:20-1:200 IF 1:20-1:200
Isotyp: IgG1	Berechnete Masse: 47 kDa	
Immunogen Katalognummer: AG1161	Beobachtete Masse: 50-55 kDa	

Anwendungen

Geprüfte Anwendungen: IF, IHC, WB, ELISA	Positivkontrollen: WB : Jurkat-Zellen, IHC : humanes Mammakarzinomgewebe, IF : HEK-293-Zellen,
Getestete Reaktivität: Human, Maus, Ratte	
Hinweis-IHC: Antigenmaskierung mit TE-Puffer pH 9,0 empfohlen. (*) Wahlweise kann die Antigenmaskierung auch mit Citratpuffer pH 6,0 erfolgen.	

Hintergrundinformationen

Via antagonizing chromatin-mediated transcriptional repression, the SWI/SNF complex in *S. cerevisiae* and *Drosophila* is thought to facilitate transcriptional activation of specific genes. The BRG1/brm-associated factors, or SMARCE1, complex in mammals is functionally related to SWI/SNF and consists of 9 to 12 subunits, some of which are homologous to SWI/SNF subunits. It contains a DNA-binding HMG domain and performs multiple biological functions, including DNA-, protein- and chromatin-binding, transcription coactivating activity, chromatin modification, DNA-dependent negative regulation of transcription, regulation of transcription of the RNA polymerase II promoter. In addition, SMARCE1, as an ER (estrogen receptor) subtype-selective modulator, regulates ER mediated transcription in a ligand-dependent manner and also directly binds to AR (androgen receptor) to alter its activity. The calculated molecular weight of SMARCE1 is 47 kDa, but modified SMARCE1 is about 55 kDa.

Lagerung

Lagerungsbedingungen:
Bei -20°C lagern. Nach dem Versand ein Jahr lang stabil
Lagerungspuffer:
PBS mit 0.02% Natriumazid und 50% Glycerin pH 7.3.
Aliquotieren ist nicht notwendig bei -20°C Lagerung

*** 20ul-Größen enthalten 0.1% BSA

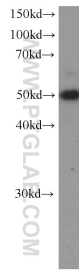
For technical support and original validation data for this product please contact:

T: 1 (888) 4PTGLAB (1-888-478-4522) (toll free
in USA), or 1(312) 455-8498 (outside USA)

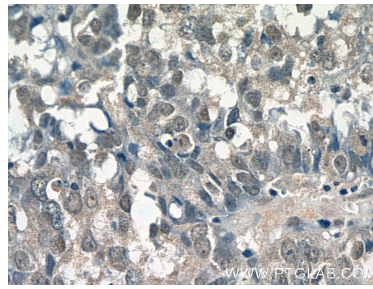
E: proteintech@ptglab.com
W: ptglab.com

This product is exclusively available under Proteintech Group brand and is not available to purchase from any other manufacturer.

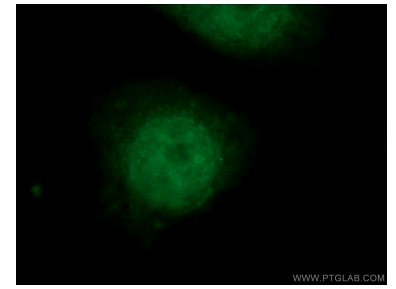
Ausgewählte Validierungsdaten



Jurkat cells were subjected to SDS PAGE followed by western blot with 66182-1-Ig (SMARCE1 Antibody) at dilution of 1:1000 incubated at room temperature for 1.5 hours.



Immunohistochemical analysis of paraffin-embedded human breast cancer tissue slide using 66182-1-Ig (SMARCE1 Antibody) at dilution of 1:100 (under 40x lens).



Immunofluorescent analysis of HEK-293 cells using 66182-1-Ig (SMARCE1 antibody) at dilution of 1:50 and FITC-Conjugated AffiniPure Goat Anti-Mouse IgG(H+L).