

Nur für Forschungszwecke

Cytokeratin 18 Monoklonaler Antikörper



Katalog-Nr.: 66187-1-Ig **10 Publikationen**

Allgemeine Informationen

| | | |
|---|---|--|
| Katalog-Nr.: 66187-1-Ig | GenBank-Zugangsnummer: BC000180 | Reinigungsmethode: Protein-A-Reinigung |
| Größe: 150ul, Konzentration: 867 µg/ml durch die Bradford-Methode mit BSA als Standard; | GeneID (NCBI): 3875 | CloneNo.: 1G11C4 |
| Wirt: Maus | Vollständiger Name: keratin 18 | Empfohlene Verdünnungen: WB 1:20000-1:100000 IHC 1:600-1:2000 IF 1:200-1:800 |
| Isotyp: IgG1 | Berechnete Masse: 48 kDa | |
| Immunogen Katalognummer: AG1260 | Beobachtete Masse: 48 kDa | |

Anwendungen

Geprüfte Anwendungen:

FC, IF, IHC, WB, ELISA

In Publikationen genannte Anwendungen:

FC, IF, IHC, WB

Getestete Reaktivität:

Hausschwein, Human, Maus, Ratte

Zitierte Arten:

Human, Maus

Hinweis-IHC: Antigenmaskierung mit TE-Puffer pH 9,0 empfohlen. (*) Wahlweise kann die Antigenmaskierung auch mit Citratpuffer pH 6,0 erfolgen.

Positivkontrollen:

WB: HCT 116-Zellen, 4T1-Zellen, A431-Zellen, COLO 320-Zellen, Hausschwein-Hautgewebe, HeLa-Zellen, HepG2-Zellen, K-562-Zellen

IHC: humanes Nierengewebe, humanes Kolonkarzinomgewebe, humanes Lebergewebe, humanes Leberkarzinomgewebe, humanes Lungenkarzinomgewebe, humanes Mammakarzinomgewebe, humanes Nierenzellkarzinomgewebe, humanes Tonsillitisgewebe, Mauslebergewebe, Mausnierengewebe, Rattenlebergewebe

IF: A549-Zellen, HeLa-Zellen, HepG2-Zellen, HUVEC-Zellen

Hintergrundinformationen

Keratins are a large family of proteins that form the intermediate filament cytoskeleton of epithelial cells, which are classified into two major sequence types. Type I keratins are a group of acidic intermediate filament proteins, including K9-K23, and the hair keratins Ha1-Ha8. Type II keratins are the basic or neutral counterparts to the acidic type I keratins, including K1-K8, and the hair keratins, Hb1-Hb6. KRT18, also named as CYK18, PIG46 and K18, is the most commonly found members of the intermediate filament gene family. KRT18 is a type I keratin which is found primarily in non squamous epithelia and is present in a majority of adenocarcinomas and ductal carcinomas but not in squamous cell carcinomas.

Bemerkenswerte Veröffentlichungen

| Verfasser | Pubmed ID | Journal | Anwendung |
|---------------|-----------|--------------------|-----------|
| Changmei Yang | 36312432 | ACS Omega | WB |
| Qiuli Liu | 33009820 | J Pathol | IF |
| Yalan Xu | 35841025 | Stem Cell Res Ther | IF |

Lagerung

Lagerungsbedingungen:

Bei -20°C lagern. Nach dem Versand ein Jahr lang stabil

Lagerungspuffer:

PBS mit 0.02% Natriumazid und 50% Glycerin pH 7.3.

Aliquotieren ist nicht notwendig bei -20°C Lagerung

***** 20ul-Größen enthalten 0.1% BSA**

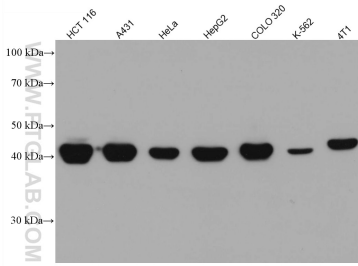
For technical support and original validation data for this product please contact:

T: 1 (888) 4PTGLAB (1-888-478-4522) (toll free in USA), or 1(312) 455-8498 (outside USA)

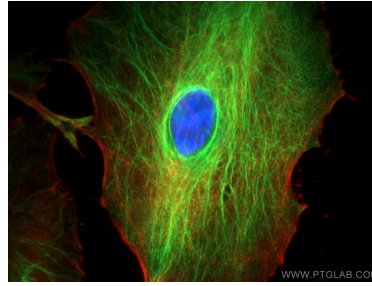
E: proteintech@ptglab.com
W: ptglab.com

This product is exclusively available under Proteintech Group brand and is not available to purchase from any other manufacturer.

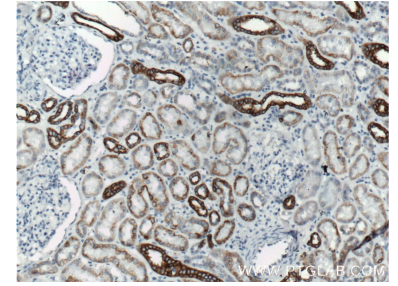
Ausgewählte Validierungsdaten



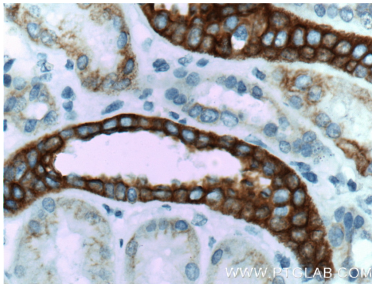
Various lysates were subjected to SDS PAGE followed by western blot with 66187-1-Ig (Cytokeratin 18 antibody) at dilution of 1:100000 incubated at room temperature for 1.5 hours.



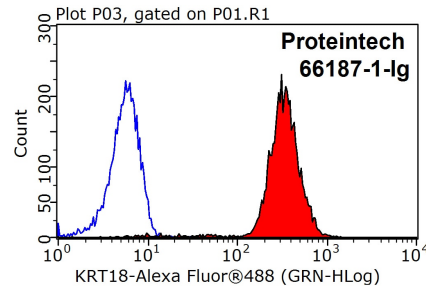
Immunofluorescent analysis of (4% PFA) fixed A549 cells using Cytokeratin 18 antibody (66187-1-Ig, Clone: 1G11C4) at dilution of 1:400 and CoraLite®488-Conjugated AffiniPure Goat Anti-Mouse IgG(H+L), CL594-Phalloidin (red).



Immunohistochemical analysis of paraffin-embedded human kidney tissue slide using 66187-1-Ig (Cytokeratin 18 antibody at dilution of 1:1200 (under 10x lens). Heat mediated antigen retrieved with Citric acid buffer, pH6.0.



Immunohistochemical analysis of paraffin-embedded human kidney tissue slide using 66187-1-Ig (Cytokeratin 18 antibody at dilution of 1:1200 (under 40x lens). Heat mediated antigen retrieved with Citric acid buffer, pH6.0.



1X10⁶ MCF-7 cells were stained with 0.2ug Cytokeratin 18 antibody (66187-1-Ig, red) and control antibody (blue). Fixed with 90% MeOH blocked with 3% BSA (30 min). Alexa Fluor 488-conjugated AffiniPure Goat Anti-Mouse IgG(H+L) with dilution 1:1500.