

Nur für Forschungszwecke

acetylated Tubulin(Lys40) Monoklonaler Antikörper



Katalog-Nr.: 66200-1-Ig **68 Publikationen**

Allgemeine Informationen

Katalog-Nr.: 66200-1-Ig	GenBank-Zugangsnummer: NM_006009	Reinigungsmethode: Protein-G-Reinigung
Größe: 150ul, Konzentration: 1400 µg/ml von 7846 Nanodrop und 700 µg/ml durch die Bradford-Methode mit BSA als Standard;	GeneID (NCBI): tubulin, alpha 1a	CloneNo.: 7E5H8
Wirt: Maus	Vollständiger Name: tubulin, alpha 1a	Empfohlene Verdünnungen: WB 1:2000-1:10000 IHC 1:1000-1:4000 IF 1:50-1:500
Isotyp: IgG1	Berechnete Masse: 52 kDa	
	Beobachtete Masse: 50-55 kDa	

Anwendungen

Geprüfte Anwendungen: IF, IHC, WB, ELISA	Positivkontrollen: WB: Rattenhodengewebe, Hausschwein-Cerebellum- Gewebe, HEK-293-Zellen, LO2-Zellen, Maus- Eierstockgewebe, NCCIT-Zellen, Neuro-2a-Zellen, Rattenhirngewebe IHC: Maus-Eierstockgewebe, humanes Gliomgewebe, humanes Lungenkarzinomgewebe, Maushirngewebe, Rattenhirngewebe IF: MDCK-Zellen, Maushirngewebe
In Publikationen genannte Anwendungen: IF, IHC, WB	
Getestete Reaktivität: Hausschwein, Human, Hund, Maus, Ratte	
Zitierte Arten: Drosophila, Hausschwein, Human, Maus, Ratte, Rind, Zebrafisch	
Hinweis-IHC: Antigenmaskierung mit TE- Puffer pH 9,0 empfohlen. (*) Wahlweise kann die Antigenmaskierung auch mit Citratpuffer pH 6,0 erfolgen.	

Hintergrundinformationen

Tubulin, composed of heterodimers of alpha and beta tubulin, is the main component of microtubules which play important roles in cell motility, mitosis, and intracellular vesicle transport. Both alpha and beta tubulin undergo several posttranslational modifications such as polyglutamylation and acetylation/deacetylation. Tubulin acetylation occurs on lysine-40 at the N-terminal of alpha tubulin and is conserved across species. The histone deacetylase HDAC6 and SIRT2 has been identified as tubulin deacetylases. Reversible acetylation of alpha tubulin may be implicated in regulating microtubule stability, cell motility, and axon regeneration. The level of acetylated tubulin has been linked to epithelial malignancies and sensitivity to chemotherapy. In addition, acetylated tubulin has been widely used as a marker for primary cilia. This antibody is specific to the acetylated tubulin; it does not recognize non-acetylated tubulin. (24268707, 23881549)

Bemerkenswerte Veröffentlichungen

Verfasser	Pubmed ID	Journal	Anwendung
Yan Yan	28966044	Dev Cell	WB
Jung Hoon Cho	36149960	Sci Adv	IHC
Zipeng A. Li	36213262	Front Endocrinol (Lausanne)	IF

Lagerung

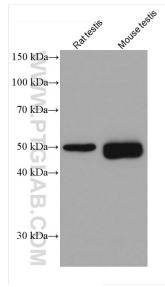
Lagerungsbedingungen:
Bei -20°C lagern. Nach dem Versand ein Jahr lang stabil
Lagerungspuffer:
PBS mit 0.02% Natriumazid und 50% Glycerin pH 7.3.
Aliquotieren ist nicht notwendig bei -20°C Lagerung

***** 20ul-Größen enthalten 0.1% BSA**

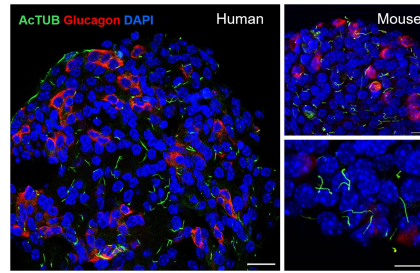
For technical support and original validation data for this product please contact:
T: 1 (888) 4PTGLAB (1-888-478-4522) (toll free in USA), or 1(312) 455-8498 (outside USA)
E: proteintech@ptglab.com
W: ptglab.com

This product is exclusively available under Proteintech Group brand and is not available to purchase from any other manufacturer.

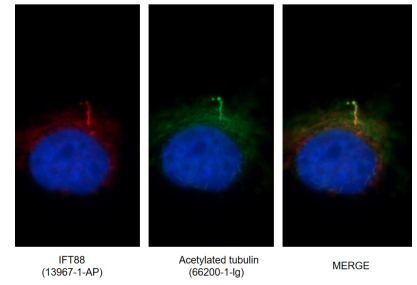
Ausgewählte Validierungsdaten



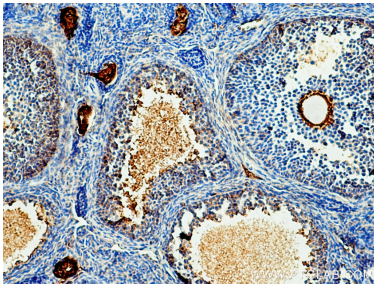
Various lysates were subjected to SDS PAGE followed by western blot with 66200-1-Ig (acetylated Tubulin(Lys40) antibody) at dilution of 1:5000 incubated at room temperature for 1.5 hours.



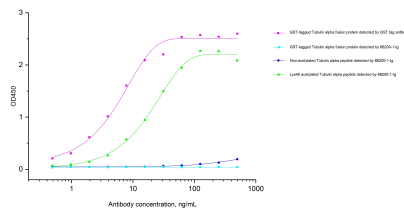
(left) Confocal image of a single-plane cross-section of a healthy human islet, showing primary cilia on both alpha cells (glucagon, red) and non-alpha cells (non-red). Acetylated alpha tubulin, cilia (green, Cat. No 66200-1-Ig, 1:400), nuclei (blue), scale 20 μ m. (right) Primary cilia in wildtype B6 mouse islets: acetylated alpha tubulin (green, Cat. No 66200-1-Ig, 1:400), glucagon (red), nuclei (blue), single-plane images, scales 10 μ m. (Fig from Dr. Jing Hughes)



Immunofluorescent images of MDCK cells stained for IFT88 rabbit pAb (13967-1-AP) and acetylated tubulin mouse mAb (66200-1-Ig) at dilution of 1:50, further stained with Alexa Fluor 594-conjugated AffiniPure Goat Anti-Rabbit IgG (H+L) for 13967-1-AP, and Alexa Fluor 488-conjugated AffiniPure Goat anti-Mouse IgG (H+L) for 66200-1-Ig.



Immunohistochemical analysis of paraffin-embedded mouse ovary tissue slide using 66200-1-Ig (acetylated Tubulin(Lys40) antibody) at dilution of 1:2000 (under 10x lens). Heat mediated antigen retrieval with Tris-EDTA buffer (pH 9.0).



Specificity validation by indirect ELISA. Indirect ELISA was carried out by coating E.coli expressed GST-tagged Tubulin alpha (70 ng/well), non-acetylated Tubulin alpha, and Lys40 acetylated Tubulin alpha (with excessive amount) followed by blocking and adding serial diluted GST tag primary antibody (Cat.NO. 66001-2-Ig) and Acetylated Tubulin antibody 66200-1-Ig respectively. HRP-Goat anti-mouse secondary antibody was used for detection. Signal was developed with