

Nur für Forschungszwecke

SERPINE2 Monoklonaler Antikörper

Katalog-Nr.: 66203-1-Ig **2 Publikationen**



Allgemeine Informationen

Katalog-Nr.: 66203-1-Ig	GenBank-Zugangsnummer: BC015663	Reinigungsmethode: Protein-G-Reinigung
Größe: 150ul, Konzentration: 867 µg/ml durch die Bradford-Methode mit BSA als Standard;	GeneID (NCBI): 5270	CloneNo.: 1E11F12
Wirt: Maus	Vollständiger Name: serpin peptidase inhibitor, clade E (nexin, plasminogen activator inhibitor type 1), member 2	Empfohlene Verdünnungen: WB 1:5000-1:50000 IHC 1:50-1:500 IF 1:200-1:800
Isotyp: IgG1	Berechnete Masse: 44 kDa	
Immunogen Katalognummer: AG1830	Beobachtete Masse: 44 kDa	

Anwendungen

Geprüfte Anwendungen: IF, IHC, WB, ELISA	Positivkontrollen: WB : hTERT-RPE1-Zellen, C6-Zellen, HEK-293-Zellen, Neuro-2a-Zellen, U-251-Zellen, U-87 MG-Zellen
In Publikationen genannte Anwendungen: IHC, WB	IHC : humanes Plazenta-Gewebe, humanes Hodengewebe
Getestete Reaktivität: Human, Maus, Ratte	IF : HEK-293-Zellen,
Zitierte Arten: Human	

Hinweis-IHC: Antigenmaskierung mit TE-Puffer pH 9,0 empfohlen. (*) Wahlweise kann die Antigenmaskierung auch mit Citratpuffer pH 6,0 erfolgen.

Hintergrundinformationen

SERPINE2 also called protease nexin-1 or glial-derived neurite promoting factor, is a member of the serine protease inhibitor (SERPIN) superfamily. It would be a potent inhibitor of the urokinase-plasminogen activator (uPA), tissue-type PA (tPA), thrombin, trypsin, factor X_{ia}, and prostaticin. SERPINE2 is widely expressed in various tissues, including endothelial cells, fibroblasts, smooth muscle cells, tumor cells, glial cells, neurons, and placental cells.

Bemerkenswerte Veröffentlichungen

Verfasser	Pubmed ID	Journal	Anwendung
Ying Yang	29556291	Oncol Lett	IHC
Xiyang Zhang	33363167	Front Cell Dev Biol	WB

Lagerung

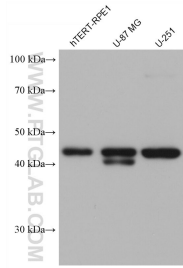
Lagerungsbedingungen:
Bei -20°C lagern. Nach dem Versand ein Jahr lang stabil
Lagerungspuffer:
PBS mit 0.02% Natriumazid und 50% Glycerin pH 7.3.
Aliquotieren ist nicht notwendig bei -20°C Lagerung

*** 20ul-Größen enthalten 0.1% BSA

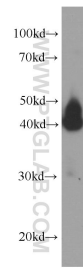
For technical support and original validation data for this product please contact:
T: 1 (888) 4PTGLAB (1-888-478-4522) (toll free in USA), or 1(312) 455-8498 (outside USA)
E: proteintech@ptglab.com
W: ptglab.com

This product is exclusively available under Proteintech Group brand and is not available to purchase from any other manufacturer.

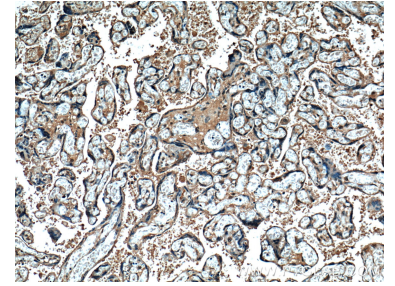
Ausgewählte Validierungsdaten



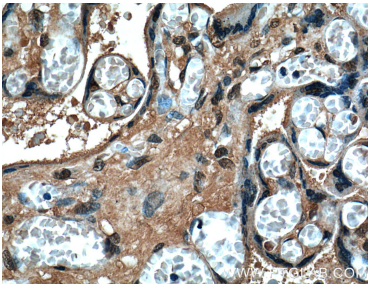
Various lysates were subjected to SDS PAGE followed by western blot with 66203-1-Ig (SERPINE2 antibody) at dilution of 1:10000 incubated at room temperature for 1.5 hours.



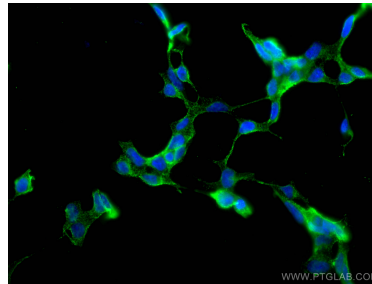
HEK-293 cells were subjected to SDS PAGE followed by western blot with 66203-1-Ig (SERPINE2 Antibody) at dilution of 1:2000 incubated at room temperature for 1.5 hours.



Immunohistochemical analysis of paraffin-embedded human placenta tissue slide using 66203-1-Ig (SERPINE2 Antibody) at dilution of 1:200 (under 10x lens).



Immunohistochemical analysis of paraffin-embedded human placenta tissue slide using 66203-1-Ig (SERPINE2 Antibody) at dilution of 1:200 (under 40x lens).



Immunofluorescent analysis of (4% PFA) fixed HEK-293 cells using SERPINE2 antibody (66203-1-Ig, Clone: 1E11F12) at dilution of 1:400 and CoralLite® 488-Conjugated AffiniPure Goat Anti-Mouse IgG(H+L).