

Allgemeine Informationen

Katalog-Nr.: 66205-1-Ig	GenBank-Zugangsnummer: BC014547	Reinigungsmethode: Protein-A-Reinigung
Größe: 150ul , Konzentration: 600 µg/ml von Nanodrop und 407 µg/ml durch die Bradford-Methode mit BSA als Standard;	GeneID (NCBI): 4151	CloneNo.: 1A4F7
Wirt: Maus	Vollständiger Name: myoglobin	Empfohlene Verdünnungen: WB 1:5000-1:80000 IHC 1:50-1:500
Isotyp: IgG1	Berechnete Masse: 154 aa, 17 kDa	
Immunogen Katalognummer: AG8979	Beobachtete Masse: 17-18 kDa	

Anwendungen

Geprüfte Anwendungen:

FC, IHC, WB, ELISA

Getestete Reaktivität:

Hausschwein, Human, Kaninchen, Maus, Ratte

Hinweis-IHC: Antigendemaskierung mit TE-Puffer pH 9,0 empfohlen. (*) Wahlweise kann die Antigendemaskierung auch mit Citratpuffer pH 6,0 erfolgen.

Positivkontrollen:

WB : humanes Skelettmuskelgewebe, Hausschwein-Herzgewebe, humanes Herzgewebe, Kaninchenherzgewebe, Mausherzgewebe, Rattenherzgewebe

IHC : humanes Herzgewebe, Mauszungengewebe, Rattenherzgewebe

Hintergrundinformationen

Myoglobin is a cytoplasmic hemoprotein that is expressed primarily in cardiomyocytes and oxidative skeletal muscle fibers, functioning on facilitating oxygen transport and modulating nitric oxide homeostasis within cardiac and skeletal myocytes. Recent studies indicated that myoglobin was also expressed in non-muscle tissues. This antibody well recognized endogenous myoglobin in muscle lysates.

Lagerung

Lagerungsbedingungen:

Bei -20°C lagern. Nach dem Versand ein Jahr lang stabil

Lagerungspuffer:

PBS mit 0.02% Natriumazid und 50% Glycerin pH 7.3.

Aliquotieren ist nicht notwendig bei -20°C Lagerung

*** 20ul-Größen enthalten 0.1% BSA

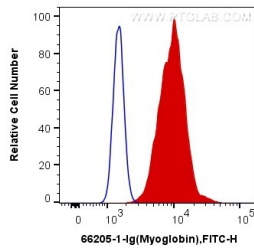
For technical support and original validation data for this product please contact:

T: 1 (888) 4PTGLAB (1-888-478-4522) (toll free in USA), or 1(312) 455-8498 (outside USA)

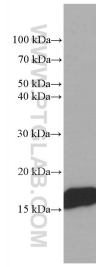
E: proteintech@ptglab.com
W: ptglab.com

This product is exclusively available under Proteintech Group brand and is not available to purchase from any other manufacturer.

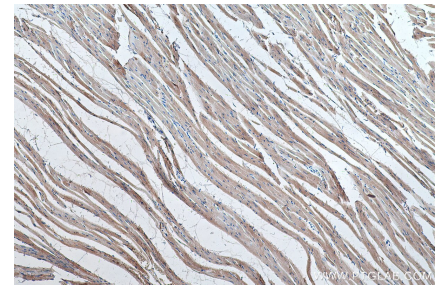
Ausgewählte Validierungsdaten



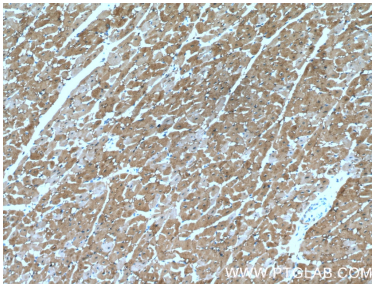
1X10⁶ C2C12 cells were intracellularly stained with 0.4 ug Anti-Human Myoglobin (66205-1-Ig, Clone:1A4F7) and Coralite@488-Conjugated AffiniPure Goat Anti-Mouse IgG(H+L) at dilution 1:1000 (red), or 0.4 ug Control Antibody. Cells were fixed with 4% PFA and permeabilized with Flow Cytometry Perm Buffer (PF00011-C).



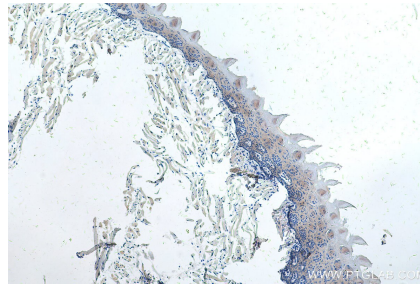
human skeletal muscle tissue were subjected to SDS PAGE followed by western blot with 66205-1-Ig (Myoglobin antibody at dilution of 1:50000 incubated at room temperature for 1.5 hours.



Immunohistochemical analysis of paraffin-embedded rat heart tissue slide using 66205-1-Ig (Myoglobin antibody) at dilution of 1:8000 (under 10x lens). Heat mediated antigen retrieval with Tris-EDTA buffer (pH 9.0).



Immunohistochemical analysis of paraffin-embedded human heart tissue slide using 66205-1-Ig (Myoglobin antibody at dilution of 1:200 (under 10x lens).



Immunohistochemical analysis of paraffin-embedded mouse tongue tissue slide using 66205-1-Ig (Myoglobin antibody) at dilution of 1:8000 (under 10x lens). Heat mediated antigen retrieval with Tris-EDTA buffer (pH 9.0).