

Nur für Forschungszwecke

Apolipoprotein A1 Monoklonaler Antikörper



Katalog-Nr.: 66206-1-Ig **7 Publikationen**

Allgemeine Informationen

Katalog-Nr.: 66206-1-Ig	GenBank-Zugangsnummer: BC005380	Reinigungsmethode: Protein-A-Reinigung
Größe: 150ul, Konzentration: 1067 µg/ml durch die Bradford-Methode mit BSA als Standard;	GeneID (NCBI): 335	CloneNo.: 1C9G5
Wirt: Maus	Vollständiger Name: apolipoprotein A-I	Empfohlene Verdünnungen: WB 1:1000-1:4000 IHC 1:50-1:500 IF 1:50-1:500
Isotyp: IgG2b	Berechnete Masse: 31 kDa	
Immunogen Katalognummer: AG21920	Beobachtete Masse: 26-28 kDa	

Anwendungen

Geprüfte Anwendungen: FC, IF, IHC, WB, ELISA	Positivkontrollen: WB : humanes Plasmagewebe, IHC : humanes Leberkarzinomgewebe, Mausnierengewebe IF : HepG2-Zellen,
In Publikationen genannte Anwendungen: WB	
Getestete Reaktivität: Human, Maus	
Zitierte Arten: Human, Maus, Ratte	
Hinweis-IHC: Antigenmaskierung mit TE-Puffer pH 9,0 empfohlen. (*) Wahlweise kann die Antigenmaskierung auch mit Citratpuffer pH 6,0 erfolgen.	

Hintergrundinformationen

ApoA1 is a major protein component of high density lipoproteins (HDL) which is associated with reversed cholesterol transport, lipid/cholesterol binding, lecithin/cholesterol acyltransferase (LCAT) activation and specific receptors binding. It is synthesized in the liver and small intestine. Defects of ApoA1 cause low HDL level and systemic non-neuropathic amyloidosis. Serum concentration of ApoA1 is inversely related to the risk of developing atherosclerosis. This antibody was generated against the C-terminal region of human ApoA1.

Bemerkenswerte Veröffentlichungen

Verfasser	Pubmed ID	Journal	Anwendung
Hideaki Morishita	31526472	Elife	WB
Ying Zhang	36172518	Front Nutr	WB
Zhonghao Li	36498935	Int J Mol Sci	WB

Lagerung

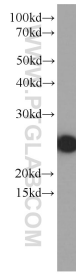
Lagerungsbedingungen:
Bei -20°C lagern. Nach dem Versand ein Jahr lang stabil
Lagerungspuffer:
PBS mit 0.02% Natriumazid und 50% Glycerin pH 7.3.
Aliquotieren ist nicht notwendig bei -20°C Lagerung

*** 20ul-Größen enthalten 0.1% BSA

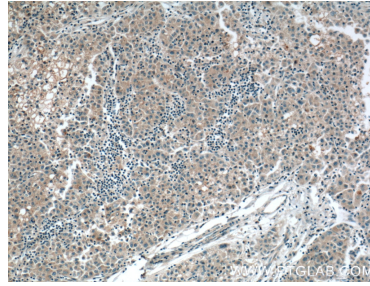
For technical support and original validation data for this product please contact:
T: 1 (888) 4PTGLAB (1-888-478-4522) (toll free in USA), or 1(312) 455-8498 (outside USA)
E: proteintech@ptglab.com
W: ptglab.com

This product is exclusively available under Proteintech Group brand and is not available to purchase from any other manufacturer.

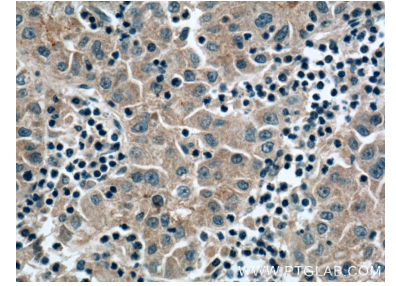
Ausgewählte Validierungsdaten



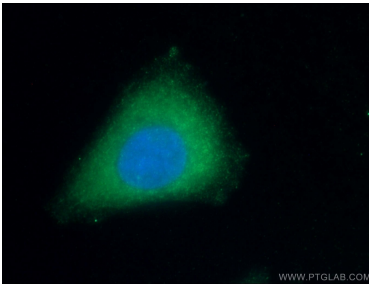
human plasma were subjected to SDS PAGE followed by western blot with 66206-1-Ig (APOA1 Antibody) at dilution of 1:2000 incubated at room temperature for 1.5 hours.



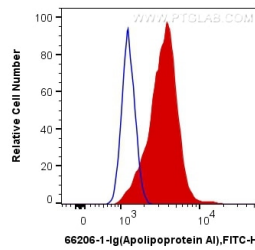
Immunohistochemical analysis of paraffin-embedded human liver cancer tissue slide using 66206-1-Ig (APOA1 Antibody) at dilution of 1:400 (under 10x lens). Heat mediated antigen retrieval with Tris-EDTA buffer (pH 9.0).



Immunohistochemical analysis of paraffin-embedded human liver cancer tissue slide using 66206-1-Ig (APOA1 Antibody) at dilution of 1:400 (under 40x lens). Heat mediated antigen retrieval with Tris-EDTA buffer (pH 9.0).



Immunofluorescent analysis of (-20°C Ethanol) fixed HepG2 cells using 66206-1-Ig (APOA1 antibody) at dilution of 1:100 and Alexa Fluor 488-conjugated AffiniPure Goat Anti-Mouse IgG(H+L).



1x10⁶ HepG2 cells were intracellularly stained with 0.4 ug Anti-Human Apolipoprotein AI (66206-1-Ig, Clone:1C9G5) and Coralite@488-Conjugated AffiniPure Goat Anti-Mouse IgG(H+L) at dilution 1:1000 (red), or 0.4 ug Control Antibody. Cells were fixed with 4% PFA and permeabilized with Flow Cytometry Perm Buffer (PF00011-C).