

Nur für Forschungszwecke

Beta-2-Microglobulin Monoklonaler Antikörper



Katalog-Nr.:66207-1-Ig

Allgemeine Informationen

Katalog-Nr.: 66207-1-Ig	GenBank-Zugangsnummer: BC032589	Reinigungsmethode: Protein-A-Reinigung
Größe: 150ul , Konzentration: 1460 µg/ml durch die Bradford-Methode mit BSA als Standard;	GeneID (NCBI): 567	CloneNo.: 1C3B7
Wirt: Maus	Vollständiger Name: beta-2-microglobulin	Empfohlene Verdünnungen: WB 1:1000-1:8000 IHC 1:20-1:200 IF 1:200-1:800
Isotyp: IgG2b	Berechnete Masse: 14 kDa	
	Beobachtete Masse: 13 kDa	

Anwendungen

Geprüfte Anwendungen:

IF, IHC, WB, ELISA

Getestete Reaktivität:

Human

Hinweis-IHC: Antigendemaskierung mit TE-Puffer pH 9,0 empfohlen. (*) Wahlweise kann die Antigendemaskierung auch mit Citratpuffer pH 6,0 erfolgen.

Positivkontrollen:

WB : Raji-Zellen,

IHC : humanes Prostatakarzinomgewebe, humanes Nierenzellkarzinomgewebe

IF : humanes Prostatakarzinomgewebe,

Hintergrundinformationen

Beta-2-microglobulin (B2M) is a component of MHC class I molecules, which are present on the surface of nearly all nucleated cells. It can be found in body fluids under physiologic conditions as a result of shedding from cell surfaces or intracellular release. B2M has various biological functions, including antigen presentation. Investigations reveal that increased synthesis and release of B2M are present in several malignant diseases.

Lagerung

Lagerungsbedingungen:

Bei -20°C lagern. Nach dem Versand ein Jahr lang stabil

Lagerungspuffer:

PBS mit 0.02% Natriumazid und 50% Glycerin pH 7.3.

Aliquotieren ist nicht notwendig bei -20°C Lagerung

***** 20ul-Größen enthalten 0.1% BSA**

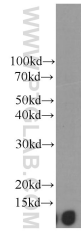
For technical support and original validation data for this product please contact:

T: 1 (888) 4PTGLAB (1-888-478-4522) (toll free in USA), or 1(312) 455-8498 (outside USA)

E: proteintech@ptglab.com
W: ptglab.com

This product is exclusively available under Proteintech Group brand and is not available to purchase from any other manufacturer.

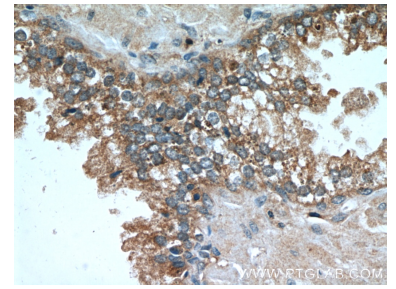
Ausgewählte Validierungsdaten



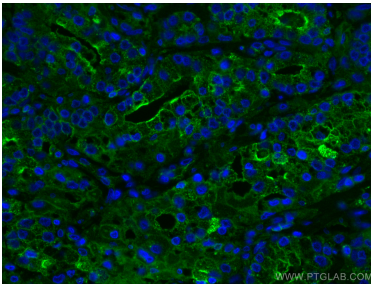
Raji cells were subjected to SDS PAGE followed by western blot with 66207-1-Ig (B2M Antibody) at dilution of 1:4000 incubated at room temperature for 1.5 hours.



Immunohistochemical analysis of paraffin-embedded human prostate cancer tissue slide using 66207-1-Ig (B2M Antibody) at dilution of 1:200 (under 10x lens).



Immunohistochemical analysis of paraffin-embedded human prostate cancer tissue slide using 66207-1-Ig (B2M Antibody) at dilution of 1:200 (under 40x lens).



Immunofluorescent analysis of (4% PFA) fixed human prostate cancer tissue using Beta-2-Microglobulin antibody (66207-1-Ig, Clone: 1C3B7) at dilution of 1:400 and CoraLite®488-Conjugated AffiniPure Goat Anti-Mouse IgG(H+L).