

Allgemeine Informationen

Katalog-Nr.: 66211-1-Ig	GenBank-Zugangsnummer: BC058928	Reinigungsmethode: Protein-A-Reinigung
Größe: 150ul , Konzentration: 1800 µg/ml von290 Nanodrop und 1000 µg/ml durch die Bradford-Methode mit BSA als Standard;	GeneID (NCBI): alanyl (membrane) aminopeptidase	CloneNo.: 2D8D11
Wirt: Maus	Berechnete Masse: 110 kDa	Empfohlene Verdünnungen: WB 1:3000-1:8000 IHC 1:5000-1:20000 IF 1:50-1:500
Isotyp: IgG2a	Beobachtete Masse: 150 kDa	
Immunogen Katalognummer: AG5976		

Anwendungen

Geprüfte Anwendungen: FC, IF, IHC, WB, ELISA	Positivkontrollen: WB : U-937-Zellen, IHC : humanes Tonsillitisgewebe, humanes Nierengewebe, Mausnierengewebe, Rattennierengewebe IF : humanes Nierengewebe,
In Publikationen genannte Anwendungen: IF, IHC, WB	
Getestete Reaktivität: Human, Maus, Ratte	
Zitierte Arten: Human	
Hinweis-IHC: Antigendemaskierung mit TE-Puffer pH 9,0 empfohlen. (*) Wahlweise kann die Antigendemaskierung auch mit Citratpuffer pH 6,0 erfolgen.	

Hintergrundinformationen

CD13, also named as APN, ANPEP(aminopeptidase N) or PEPN, is belongs to the peptidase M-1 family. CD13 is a heavily glycosylated, ~150-240 kDa, type-II membrane, expressed by most cells of myeloid origin including monocytes, macrophages, granulocytes, and their hematopoietic precursors. It is also abundantly expressed in the brush border of epithelial cells from renal proximal tubules and small intestine, in prostatic epithelial cells, in bile duct canaliculi, in mast cells, and, in some cases, in fibroblasts and smooth muscle cells. CD13 is a multifunctional protein and plays varying roles in cell migration, cell proliferation, cell differentiation and so on. CD13 participates in angiogenesis generating and modulating angiogenic signals, and can be a marker of angiogenic vessels. CD13 is also a pan-myeloid marker, present on mature granulocytes and monocytes. (PMID: 8805662, 10098327, 18603472, 18097955, 17897790, 17888402, 21339174)

Bemerkenswerte Veröffentlichungen

Verfasser	Pubmed ID	Journal	Anwendung
Kelly A Servage	32382024	Sci Rep	WB
Junxia Cao	30809310	Theranostics	IHC
Junnian Wei	31792071	Mol Cell Proteomics	WB

Lagerung

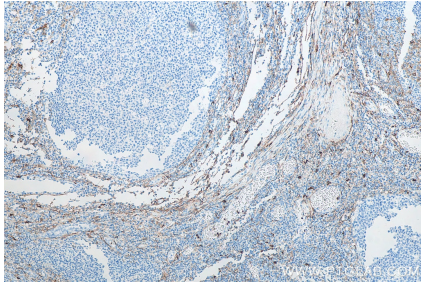
Lagerungsbedingungen:
Bei -20°C lagern. Nach dem Versand ein Jahr lang stabil
Lagerungspuffer:
PBS mit 0.02% Natriumazid und 50% Glycerin pH 7.3.
Aliquotieren ist nicht notwendig bei -20°C Lagerung

***** 20ul-Größen enthalten 0.1% BSA**

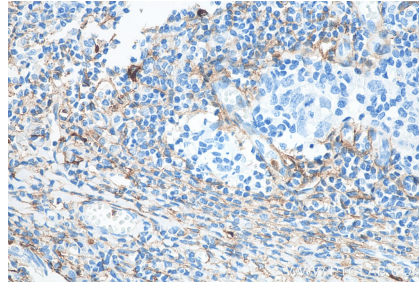
For technical support and original validation data for this product please contact:
T: 1 (888) 4PTGLAB (1-888-478-4522) (toll free in USA), or 1(312) 455-8498 (outside USA)
E: proteintech@ptglab.com
W: ptglab.com

This product is exclusively available under Proteintech Group brand and is not available to purchase from any other manufacturer.

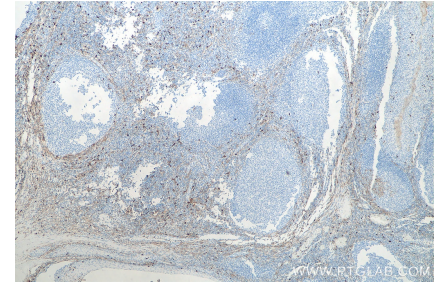
Ausgewählte Validierungsdaten



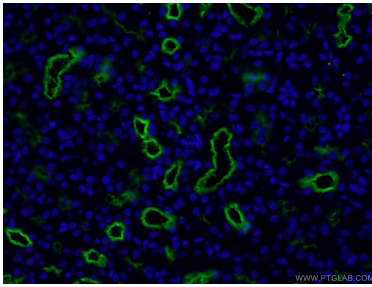
Immunohistochemical analysis of paraffin-embedded human tonsillitis tissue slide using 66211-1-Ig (CD13 antibody) at dilution of 1:10000 (under 10x lens). Heat mediated antigen retrieval with Tris-EDTA buffer (pH 9.0).



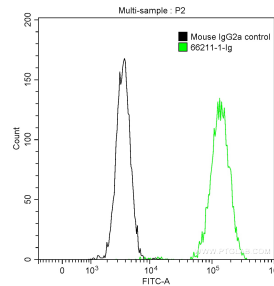
Immunohistochemical analysis of paraffin-embedded human tonsillitis tissue slide using 66211-1-Ig (CD13 antibody) at dilution of 1:10000 (under 40x lens). Heat mediated antigen retrieval with Tris-EDTA buffer (pH 9.0).



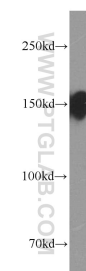
Immunohistochemical analysis of paraffin-embedded human tonsillitis tissue slide using 66211-1-Ig (CD13 antibody) at dilution of 1:10000 (under 4x lens). Heat mediated antigen retrieval with Tris-EDTA buffer (pH 9.0).



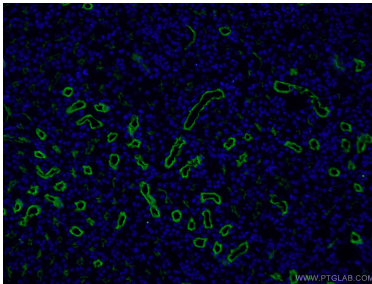
Immunofluorescent analysis of (4% PFA) fixed human kidney tissue using 66211-1-Ig (CD13 antibody) at dilution of 1:100 and Alexa Fluor 488-Conjugated AffiniPure Goat Anti-Mouse IgG(H+L).



1×10^6 U-937 cells were stained with 0.2 ug Anti-Human CD13 (66211-1-Ig, Clone:2D8D11) and CoraLite®488-Conjugated AffiniPure Goat Anti-Mouse IgG(H+L) at dilution 1:1000 (green), and 0.2 ug Control Antibody. Cells were fixed with 90% MeOH.



U-937 cells were subjected to SDS PAGE followed by western blot with 66211-1-Ig (CD13 antibody at dilution of 1:4000 incubated at room temperature for 1.5 hours.



Immunofluorescent analysis of (4% PFA) fixed human kidney tissue using 66211-1-Ig (CD13 antibody) at dilution of 1:100 and Alexa Fluor 488-Conjugated AffiniPure Goat Anti-Mouse IgG(H+L).