

Nur für Forschungszwecke

# APOD Monoklonaler Antikörper

Katalog-Nr.:66215-1-Ig **1 Publikationen**



## Allgemeine Informationen

<b>Katalog-Nr.:</b> 66215-1-Ig	<b>GenBank-Zugangsnummer:</b> BC007402	<b>Reinigungsmethode:</b> Protein-A-Reinigung
<b>Größe:</b> 150ul , Konzentration: 940 µg/ml durch die Bradford-Methode mit BSA als Standard;	<b>GeneID (NCBI):</b> 347	<b>CloneNo.:</b> 1C6D10
<b>Wirt:</b> Maus	<b>Vollständiger Name:</b> apolipoprotein D	<b>Empfohlene Verdünnungen:</b> WB 1:5000-1:50000 IF 1:400-1:1600
<b>Isotyp:</b> IgG1	<b>Berechnete Masse:</b> 33 kDa	
<b>Immunogen Katalognummer:</b> AG21422	<b>Beobachtete Masse:</b> 30-33 kDa	

## Anwendungen

<b>Geprüfte Anwendungen:</b> IF, WB, ELISA	<b>Positivkontrollen:</b> WB : humanes Plasmagewebe, humane Urinprobe, humanes Plazenta-Gewebe
<b>In Publikationen genannte Anwendungen:</b> FC, IF	<b>IF :</b> HepG2-Zellen,
<b>Getestete Reaktivität:</b> Human	
<b>Zitierte Arten:</b> Human	

## Hintergrundinformationen

Apolipoprotein D (ApoD) is a member of the lipocalin superfamily of ligand transporters, and has been implicated in the transport of small hydrophobic molecules. ApoD is also a component of plasma high-density lipoproteins (HDL). Alteration of ApoD expression has been linked to multiple neurological disorders, including Alzheimer's disease.

## Bemerkenswerte Veröffentlichungen

Verfasser	Pubmed ID	Journal	Anwendung
Xi Fang	36562137	Immunology	IF,FC

## Lagerung

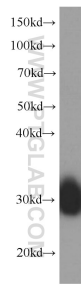
**Lagerungsbedingungen:**  
Bei -20°C lagern. Nach dem Versand ein Jahr lang stabil  
**Lagerungspuffer:**  
PBS mit 0.02% Natriumazid und 50% Glycerin pH 7.3.  
Aliquotieren ist nicht notwendig bei -20°C Lagerung

**\*\*\* 20ul-Größen enthalten 0.1% BSA**

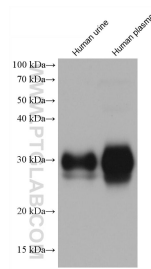
For technical support and original validation data for this product please contact:  
T: 1 (888) 4PTGLAB (1-888-478-4522) (toll free in USA), or 1(312) 455-8498 (outside USA)  
E: proteintech@ptglab.com  
W: ptglab.com

This product is exclusively available under Proteintech Group brand and is not available to purchase from any other manufacturer.

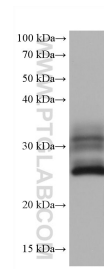
## Ausgewählte Validierungsdaten



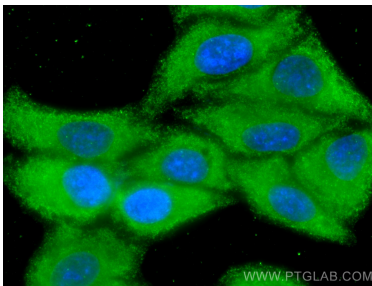
human plasma were subjected to SDS PAGE followed by western blot with 66215-1-Ig (APOD Antibody) at dilution of 1:20000 incubated at room temperature for 1.5 hours.



human urine sample were subjected to SDS PAGE followed by western blot with 66215-1-Ig (APOD antibody) at dilution of 1:10000 incubated at room temperature for 1.5 hours.



human placenta tissue were subjected to SDS PAGE followed by western blot with 66215-1-Ig (APOD antibody) at dilution of 1:10000 incubated at room temperature for 1.5 hours.



Immunofluorescent analysis of (-20°C Methanol) fixed HepG2 cells using APOD antibody (66215-1-Ig, Clone: 1C6D10) at dilution of 1:800 and CoraLite®488-Conjugated AffiniPure Goat Anti-Mouse IgG(H+L).