

Nur für Forschungszwecke

TLE1 Monoklonaler Antikörper

Katalog-Nr.:66216-1-Ig

Vorgestelltes Produkt



Allgemeine Informationen

Katalog-Nr.:

66216-1-Ig

Größe:

150ul, Konzentration: 3764 µg/ml von7088

Nanodrop und 1047 µg/ml durch die Bradford-Methode mit BSA als Standard;

Wirt:

Maus

Isotyp:

IgG2b

Immunogen Katalognummer:

AG21327

GenBank-Zugangsnummer:

BC010100

GeneID (NCBI):

7088

Vollständiger Name:

transducin-like enhancer of split 1 (E(sp1) homolog, Drosophila)

Berechnete Masse:

83 kDa

Beobachtete Masse:

85-95 kDa

Reinigungsmethode:

Protein-A-Reinigung

CloneNo.:

2F2H11

Empfohlene Verdünnungen:

WB 1:500-1:2000

IHC 1:50-1:500

Anwendungen

Geprüfte Anwendungen:

FC, IHC, WB, ELISA

Getestete Reaktivität:

Human

Hinweis-IHC: Antigenmaskierung mit TE-Puffer pH 9,0 empfohlen. (*) Wahlweise kann die Antigenmaskierung auch mit Citratpuffer pH 6,0 erfolgen.

Positivkontrollen:

WB: Jurkat-Zellen, HEK-293-Zellen

IHC: humanes Gliomgewebe,

Hintergrundinformationen

Transducin-like enhancer protein 1(TLE1) is a transcriptional corepressor. It can bind to and regress expression of many transcription factors such as NFκB, which is mediated by FOXA2, CTNNB1 and TCF family member in Wnt signaling. The effects of full-length TLE family members may be modulated by association with dominant-negative AES. Expression of TLE1 is highest in skeletal muscle and liver, moderate in placenta, heart, kidney, and spleen, and weak in all other tissues including brain.

Lagerung

Lagerungsbedingungen:

Bei -20°C lagern. Nach dem Versand ein Jahr lang stabil

Lagerungspuffer:

PBS mit 0.02% Natriumazid und 50% Glycerin pH 7.3.

Aliquotieren ist nicht notwendig bei -20°C Lagerung

*** 20ul-Größen enthalten 0.1% BSA

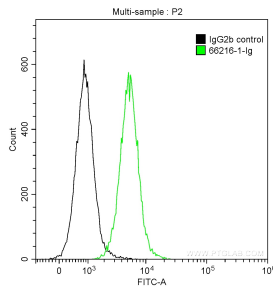
For technical support and original validation data for this product please contact:

T: 1 (888) 4PTGLAB (1-888-478-4522) (toll free in USA), or 1(312) 455-8498 (outside USA)

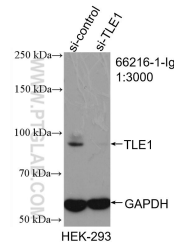
E: proteintech@ptglab.com
W: ptglab.com

This product is exclusively available under Proteintech Group brand and is not available to purchase from any other manufacturer.

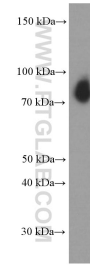
Ausgewählte Validierungsdaten



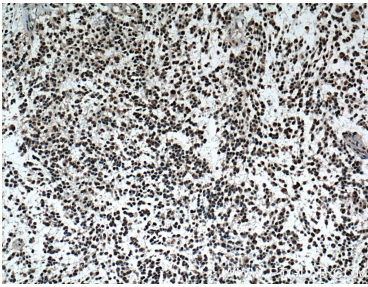
1X10⁶ Jurkat cells were intracellularly stained with 0.2 ug Anti-Human TLE1 (66216-1-Ig, Clone:2F2H11) and CoraLite®488-Conjugated AffiniPure Goat Anti-Mouse IgG(H+L) at dilution 1:1000 (green), and 0.2 ug Mouse IgG2b Isotype Control (66360-3-Ig, Clone: K11B8C4B5) (black). Cells were fixed with 90% MeOH.



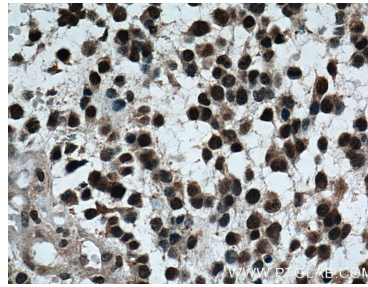
WB result of TLE1 antibody (66216-1-Ig; 1:3000; incubated at room temperature for 1.5 hours) with sh-Control and sh-TLE1 transfected HEK-293 cells.



Jurkat cells were subjected to SDS PAGE followed by western blot with 66216-1-Ig (TLE1 Antibody) at dilution of 1:1000 incubated at room temperature for 1.5 hours.



Immunohistochemical analysis of paraffin-embedded human gliomas tissue slide using 66216-1-Ig (TLE1 Antibody) at dilution of 1:200 (under 10x lens). Heat mediated antigen retrieval with Tris-EDTA buffer (pH 9.0).



Immunohistochemical analysis of paraffin-embedded human gliomas tissue slide using 66216-1-Ig (TLE1 Antibody) at dilution of 1:200 (under 40x lens). Heat mediated antigen retrieval with Tris-EDTA buffer (pH 9.0).