

Nur für Forschungszwecke

Alpha E-Catenin Monoklonaler Antikörper



Katalog-Nr.: 66221-1-Ig **3 Publikationen**

Allgemeine Informationen

Katalog-Nr.: 66221-1-Ig	GenBank-Zugangsnummer: BC031262	Reinigungsmethode: Protein-A-Reinigung
Größe: 150ul, Konzentration: 2080 µg/ml durch die Bradford-Methode mit BSA als Standard;	GeneID (NCBI): 1495	CloneNo.: 2B7B8
Wirt: Maus	Vollständiger Name: catenin (cadherin-associated protein), alpha 1, 102kDa	Empfohlene Verdünnungen: WB 1:500-1:2000 IHC 1:50-1:1000
Isotyp: IgG1	Berechnete Masse: 906 aa, 100 kDa	
Immunogen Katalognummer: AG23603	Beobachtete Masse: 95-100 kDa	

Anwendungen

Geprüfte Anwendungen: IHC, WB, ELISA	Positivkontrollen: WB : NIH/3T3-Zellen, IHC : humanes Magengewebe, humanes Kolongewebe
In Publikationen genannte Anwendungen: IHC, WB	
Getestete Reaktivität: Human, Maus	
Zitierte Arten: Human, Maus	
Hinweis-IHC: Antigenmaskierung mit TE-Puffer pH 9,0 empfohlen. (*) Wahlweise kann die Antigenmaskierung auch mit Citratpuffer pH 6,0 erfolgen.	

Hintergrundinformationen

Alpha catenin is an essential component of adherens junctions that connects E-cadherin-β-catenin complexes with the actin cytoskeleton. It also recruits a range of other important proteins to developing intercellular junctions. Three alpha catenins exist in human: alpha-E-catenin, alpha-N-catenin, and alpha-T-catenin, which share substantial amino-acid sequence similarity but have distinct tissue distribution. alpha-E-catenin is ubiquitously expressed, alpha-N-catenin is restricted to neuronal tissue, and alpha-T-catenin is primarily expressed in heart tissue. Reduced levels of alpha-E-catenin protein seem to be characteristic of many different human cancers, including malignant tumours of the breast, colon, stomach, oesophagus, bladder and liver. In addition, the loss of alpha-E-catenin often correlates with the degree of tumour differentiation and metastasis.

Bemerkenswerte Veröffentlichungen

Verfasser	Pubmed ID	Journal	Anwendung
Xianhua Hu	36367161	Mol. Med Rep	WB,IHC
Dan Sun	27835600	Oncotarget	WB
Chisato Sakuma	35216185	Int J Mol Sci	IHC

Lagerung

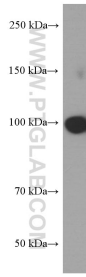
Lagerungsbedingungen:
Bei -20°C lagern. Nach dem Versand ein Jahr lang stabil
Lagerungspuffer:
PBS mit 0.02% Natriumazid und 50% Glycerin pH 7.3.
Aliquotieren ist nicht notwendig bei -20°C Lagerung

***** 20ul-Größen enthalten 0.1% BSA**

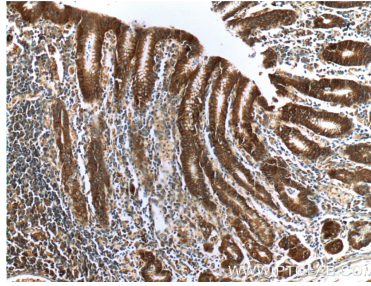
For technical support and original validation data for this product please contact:
T: 1 (888) 4PTGLAB (1-888-478-4522) (toll free in USA), or 1(312) 455-8498 (outside USA)
E: proteintech@ptglab.com
W: ptglab.com

This product is exclusively available under Proteintech Group brand and is not available to purchase from any other manufacturer.

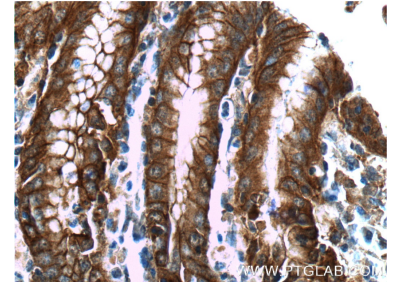
Ausgewählte Validierungsdaten



NIH/3T3 cells were subjected to SDS PAGE followed by western blot with 66221-1-Ig (Alpha E catenin antibody) at dilution of 1:1000 incubated at room temperature for 1.5 hours.



Immunohistochemical analysis of paraffin-embedded human stomach tissue slide using 66221-1-Ig (Alpha E catenin antibody at dilution of 1:200 (under 10x lens).



Immunohistochemical analysis of paraffin-embedded human stomach tissue slide using 66221-1-Ig (Alpha E catenin antibody at dilution of 1:200 (under 40x lens).