

Nur für Forschungszwecke

CHD4 Monoklonaler Antikörper

Katalog-Nr.:66222-1-Ig

Vorgestelltes Produkt



Allgemeine Informationen

Katalog-Nr.: 66222-1-Ig	GenBank-Zugangsnummer: BC038596	Reinigungsmethode: Protein-G-Reinigung
Größe: 150ul , Konzentration: 1300 µg/ml von1108 Nanodrop und 1000 µg/ml durch die Bradford-Methode mit BSA als Standard;	GeneID (NCBI): 1108	CloneNo.: 3D9G2
Wirt: Maus	Vollständiger Name: chromodomain helicase DNA binding protein 4	Empfohlene Verdünnungen: WB 1:500-1:2000 IHC 1:50-1:500 IF 1:50-1:500
Isotyp: IgG1	Berechnete Masse: 1937 aa, 221 kDa	
Immunogen Katalognummer: AG5729	Beobachtete Masse: 260 kDa	

Anwendungen

Geprüfte Anwendungen: IF, IHC, WB,ELISA	Positivkontrollen: WB : MCF-7-Zellen, HEK-293-Zellen IHC : humanes Zervixkarzinomgewebe, IF : HEK-293-Zellen,
Getestete Reaktivität: Human, Maus, Ratte	
Hinweis-IHC: Antigenmaskierung mit TE-Puffer pH 9,0 empfohlen. (*) Wahlweise kann die Antigenmaskierung auch mit Citratpuffer pH 6,0 erfolgen.	

Hintergrundinformationen

Chromodomain helicase DNA-binding protein 4 (CHD4) is an ATP dependent chromatin remodeler and a major subunit of the repressive NuRD complex [PMID:9790534]. This complex plays key roles in transcriptional regulation and reorganization and maintenance of chromatin structure, as it targets pericentromeric heterochromatin and has recently been implicated in DNA damage repair, being rapidly recruited to DNA double strand breaks [PMID:17694084]. CHD4 is a novel BRIT1 binding partner that regulates the HR repair process, which is a critical pathway of repairing DNA double strand breaks and plays an essential role in maintaining genomic integrity [PMID:22219182]. The calculated molecular weight of CHD4 is 218 kDa, but modified CHD4 is about 250-280 kDa.

Lagerung

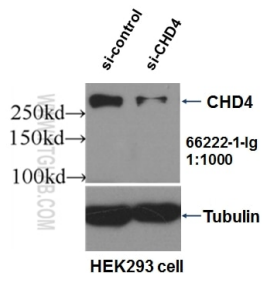
Lagerungsbedingungen:
Bei -20°C lagern. Nach dem Versand ein Jahr lang stabil
Lagerungspuffer:
PBS mit 0.02% Natriumazid und 50% Glycerin pH 7.3.
Aliquotieren ist nicht notwendig bei -20°C Lagerung

*** 20ul-Größen enthalten 0.1% BSA

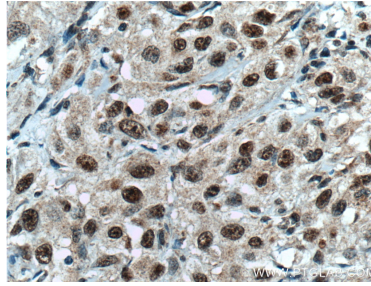
For technical support and original validation data for this product please contact:
T: 1 (888) 4PTGLAB (1-888-478-4522) (toll free in USA), or 1(312) 455-8498 (outside USA)
E: proteintech@ptglab.com
W: ptglab.com

This product is exclusively available under Proteintech Group brand and is not available to purchase from any other manufacturer.

Ausgewählte Validierungsdaten



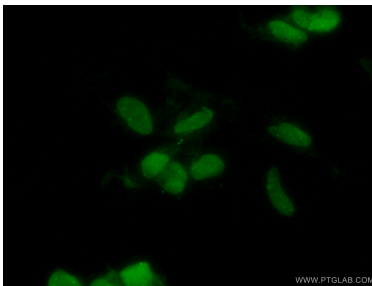
WB result of CHD4 antibody (66222-1-Ig, 1:1000) with si-Control and si-CHD4 transfected HEK293 cells.



Immunohistochemical analysis of paraffin-embedded human cervical cancer tissue slide using 66222-1-Ig (CHD4 antibody) at dilution of 1:200 (under 40x lens. Heat mediated antigen retrieval with Tris-EDTA buffer (pH 9.0).



MCF-7 cells were subjected to SDS PAGE followed by western blot with 66222-1-Ig (CHD4 Antibody) at dilution of 1:1000 incubated at room temperature for 1.5 hours.



Immunofluorescent analysis of (10% Formaldehyde) fixed HEK-293 cells using 66222-1-Ig(CHD4 antibody) at dilution of 1:100 and Alexa Fluor 488-conjugated AffiniPure Goat Anti-Mouse IgG(H+L).