

Nur für Forschungszwecke

S100A10 Monoklonaler Antikörper

Katalog-Nr.:66227-1-Ig



Allgemeine Informationen

Katalog-Nr.: 66227-1-Ig	GenBank-Zugangsnummer: BC015973	Reinigungsmethode: Protein-G-Reinigung
Größe: 150ul , Konzentration: 3100 µg/ml von6281 Nanodrop und 1720 µg/ml durch die Bradford-Methode mit BSA als Standard;	GeneID (NCBI): S100 calcium binding protein A10	CloneNo.: 1B3F9
Wirt: Maus	Vollständiger Name: S100 calcium binding protein A10	Empfohlene Verdünnungen: WB 1:1000-1:4000 IHC 1:50-1:500 IF 1:200-1:800
Isotyp: IgG1	Berechnete Masse: 11 kDa	
Immunogen Katalognummer: AG23596	Beobachtete Masse: 11 kDa	

Anwendungen

Geprüfte Anwendungen: IF, IHC, WB, ELISA	Positivkontrollen:
Getestete Reaktivität: Human	WB : humanes Lungengewebe,
Hinweis-IHC: Antigendemaskierung mit TE-Puffer pH 9,0 empfohlen. (*) Wahlweise kann die Antigendemaskierung auch mit Citratpuffer pH 6,0 erfolgen.	IHC : humanes Kolonkarzinomgewebe, humanes Leberkarzinomgewebe, humanes Magenkrebsgewebe, humanes Pankreaskarzinomgewebe, humanes Zervixkarzinomgewebe
	IF : A431-Zellen,

Hintergrundinformationen

S100A10, also known as p11, is a member of the S100 family of small, EF hand containing dimeric proteins. S100 proteins are localized in the cytoplasm and/or nucleus of a wide range of cells, and involved in the regulation of a number of cellular processes such as cell cycle progression and differentiation. S100A10 is present on the surface of endothelial and other cells in a heterotetrameric complex with another Ca(2+)-binding protein, annexin II. S100A10 may function in exocytosis and endocytosis.

Lagerung

Lagerungsbedingungen:
Bei -20°C lagern. Nach dem Versand ein Jahr lang stabil
Lagerungspuffer:
PBS mit 0.02% Natriumazid und 50% Glycerin pH 7.3.
Aliquotieren ist nicht notwendig bei -20°C Lagerung

*** 20ul-Größen enthalten 0.1% BSA

For technical support and original validation data for this product please contact:

T: 1 (888) 4PTGLAB (1-888-478-4522) (toll free in USA), or 1(312) 455-8498 (outside USA)

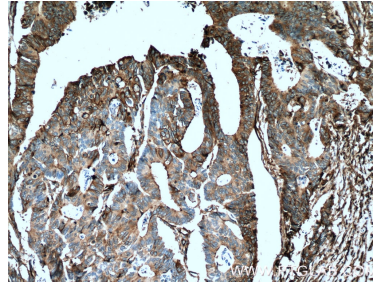
E: proteintech@ptglab.com
W: ptglab.com

This product is exclusively available under Proteintech Group brand and is not available to purchase from any other manufacturer.

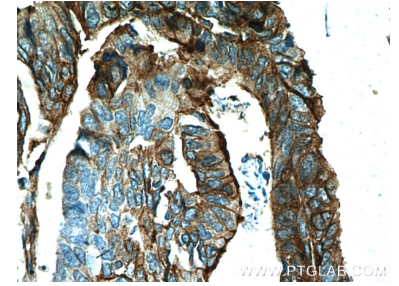
Ausgewählte Validierungsdaten



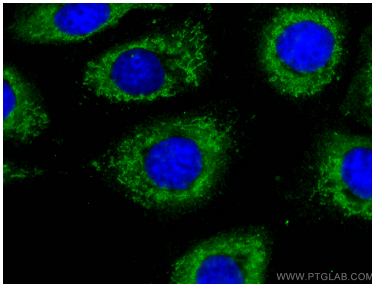
human lung tissue were subjected to SDS PAGE followed by western blot with 66227-1-Ig (S100A10 Antibody) at dilution of 1:2000 incubated at room temperature for 1.5 hours.



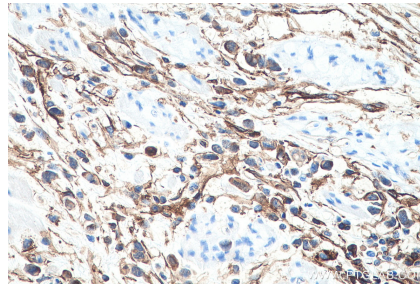
Immunohistochemical analysis of paraffin-embedded human colon cancer tissue slide using 66227-1-Ig (S100A10 Antibody) at dilution of 1:200 (under 10x lens). Heat mediated antigen retrieval with Tris-EDTA buffer (pH 9.0).



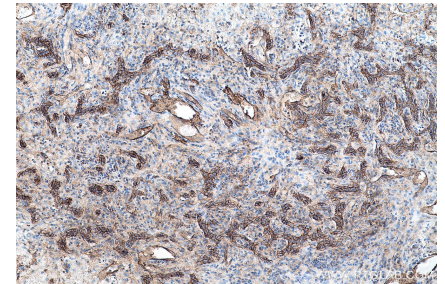
Immunohistochemical analysis of paraffin-embedded human colon cancer tissue slide using 66227-1-Ig (S100A10 Antibody) at dilution of 1:200 (under 40x lens). Heat mediated antigen retrieval with Tris-EDTA buffer (pH 9.0).



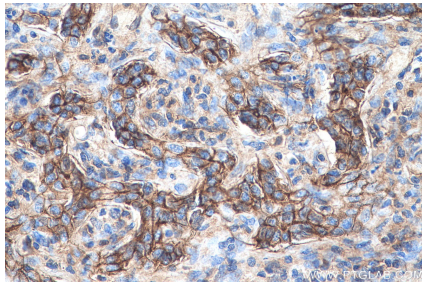
Immunofluorescent analysis of (4% PFA) fixed A431 cells using S100A10 antibody (66227-1-Ig, Clone: 1B3F9) at dilution of 1:400 and CoraLite®488-Conjugated AffiniPure Goat Anti-Mouse IgG(H+L).



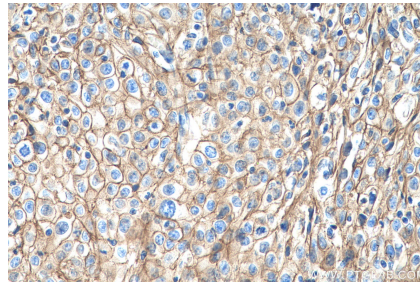
Immunohistochemical analysis of paraffin-embedded human stomach cancer tissue slide using 66227-1-Ig (S100A10 antibody) at dilution of 1:4000 (under 40x lens). Heat mediated antigen retrieval with Tris-EDTA buffer (pH 9.0).



Immunohistochemical analysis of paraffin-embedded human liver cancer tissue slide using 66227-1-Ig (S100A10 antibody) at dilution of 1:4000 (under 10x lens). Heat mediated antigen retrieval with Tris-EDTA buffer (pH 9.0).



Immunohistochemical analysis of paraffin-embedded human liver cancer tissue slide using 66227-1-Ig (S100A10 antibody) at dilution of 1:4000 (under 40x lens). Heat mediated antigen retrieval with Tris-EDTA buffer (pH 9.0).



Immunohistochemical analysis of paraffin-embedded human cervical cancer tissue slide using 66227-1-Ig (S100A10 antibody) at dilution of 1:4000 (under 40x lens). Heat mediated antigen retrieval with Tris-EDTA buffer (pH 9.0).



Immunohistochemical analysis of paraffin-embedded human cervical cancer tissue slide using 66227-1-Ig (S100A10 antibody) at dilution of 1:4000 (under 40x lens). Heat mediated antigen retrieval with Tris-EDTA buffer (pH 9.0).