

Nur für Forschungszwecke

# Pikachurin Monoklonaler Antikörper

Katalog-Nr.:66232-1-Ig



## Allgemeine Informationen

<b>Katalog-Nr.:</b> 66232-1-Ig	<b>GenBank-Zugangsnummer:</b> BC033177	<b>Reinigungsmethode:</b> Protein-A-Reinigung
<b>Größe:</b> 150ul , Konzentration: 2800 µg/ml von	<b>GeneID (NCBI):</b> 133584	<b>CloneNo.:</b> 1C6D12
Nanodrop und 2000 µg/ml durch die Bradford-Methode mit BSA als Standard;	<b>Vollständiger Name:</b> EGF-like, fibronectin type III and laminin G domains	<b>Empfohlene Verdünnungen:</b> WB 1:500-1:2000 IF 1:200-1:800
<b>Wirt:</b> Maus	<b>Berechnete Masse:</b> 111 kDa	
<b>Isotyp:</b> IgG1	<b>Beobachtete Masse:</b> 111 kDa, 55-60 kDa	
<b>Immunogen Katalognummer:</b> AG6362		

## Anwendungen

<b>Geprüfte Anwendungen:</b> IF, WB, ELISA	<b>Positivkontrollen:</b> WB : humanes Retina-Gewebe, PC-3-Zellen
<b>Getestete Reaktivität:</b> Human	IF : Y79-Zellen,

## Hintergrundinformationen

Pikachurin, also known as EGFLAM or FLJ39155, is an extracellular matrix-like retinal protein that has been found to localize in the synaptic cleft of the photoreceptor ribbon synapse (PMID: 18641643). Pikachurin is a dystroglycan-interacting protein and has an essential role in photoreceptor ribbon synapse formation. Pikachurin is a 1017-amino-acid protein with a calculated molecular weight of 111 kDa and high mRNA abundance in retina. This monoclonal antibody detects two bands of 111 kDa and 55-60 kDa. The lower-molecular-weight band has been reported and likely represents a fragment resulting from cleavage of Pikachurin (PMID: 23226524).

## Lagerung

**Lagerungsbedingungen:**  
Bei -20°C lagern. Nach dem Versand ein Jahr lang stabil  
**Lagerungspuffer:**  
PBS mit 0.02% Natriumazid und 50% Glycerin pH 7.3.  
**Aliquotieren ist nicht notwendig bei -20°C Lagerung**

\*\*\* 20ul-Größen enthalten 0.1% BSA

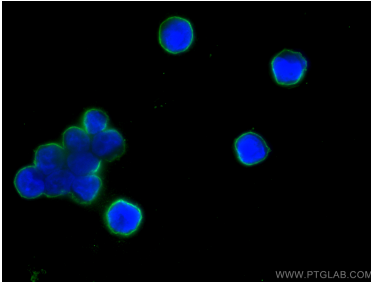
For technical support and original validation data for this product please contact:

T: 1 (888) 4PTGLAB (1-888-478-4522) (toll free  
in USA), or 1(312) 455-8498 (outside USA)

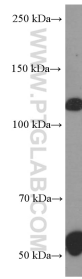
E: proteintech@ptglab.com  
W: ptglab.com

This product is exclusively available under Proteintech Group brand and is not available to purchase from any other manufacturer.

## Ausgewählte Validierungsdaten



Immunofluorescent analysis of (4% PFA) fixed Y79 cells using Pikachurin antibody (66232-1-Ig, Clone: 1C6D12) at dilution of 1:400 and CoraLite®488-Conjugated AffiniPure Goat Anti-Mouse IgG(H+L).



human retina tissue were subjected to SDS PAGE followed by western blot with 66232-1-Ig (Pikachurin antibody at dilution of 1:1000 incubated at room temperature for 1.5 hours.