

Nur für Forschungszwecke

# SALL4 Monoklonaler Antikörper

Katalog-Nr.: 66236-1-Ig **2 Publikationen**



## Allgemeine Informationen

<b>Katalog-Nr.:</b> 66236-1-Ig	<b>GenBank-Zugangsnummer:</b> BC111714	<b>Reinigungsmethode:</b> Protein-G-Reinigung
<b>Größe:</b> 150ul, Konzentration: 1500 µg/ml von 57167 Nanodrop und 793 µg/ml durch die Bradford-Methode mit BSA als Standard;	<b>GeneID (NCBI):</b> 57167	<b>CloneNo.:</b> 2B5B2
<b>Wirt:</b> Maus	<b>Vollständiger Name:</b> sal-like 4 (Drosophila)	<b>Empfohlene Verdünnungen:</b> WB 1:500-1:2000
<b>Isotyp:</b> IgG1	<b>Berechnete Masse:</b> 1053 aa, 112 kDa	
<b>Immunogen Katalognummer:</b> AG17480	<b>Beobachtete Masse:</b> 165 kDa	

## Anwendungen

<b>Geprüfte Anwendungen:</b> WB, ELISA	<b>Positivkontrollen:</b> WB: K-562-Zellen,
<b>In Publikationen genannte Anwendungen:</b> IHC, WB	
<b>Getestete Reaktivität:</b> Human	
<b>Zitierte Arten:</b> Human	

## Hintergrundinformationen

SALL4, also named as Sal-like protein 4 or Zinc finger protein 797, Contains 7 C2H2-type zinc fingers and belongs to the sal C2H2-type zinc-finger protein family. SALL4 is constitutively expressed in acute myeloid leukemia. The constitutive expression of SALL4 in mice is sufficient to induce MDS-like symptoms and transformation to AML that is transplantable. SALL4 is able to bind beta-catenin and activate the Wnt/beta-catenin signaling pathway. Sequence analysis of the larger cDNA fragment isolated revealed a single, large open-reading frame, designated as SALL4A, that started from a strong consensus initiation sequence and was expected to encode 1053 amino acids. The other splicing variant of SALL4, designated SALL4B, lacked the region corresponding to amino acids 385 to 820 of the full-length SALL4A. The putative protein encoded by SALL4B cDNA was expected to consist of 617 amino acids.

## Bemerkenswerte Veröffentlichungen

Verfasser	Pubmed ID	Journal	Anwendung
Peng Wu	32222813	Pediatr Surg Int	IHC
Chiung-Chi Cheng	33860837	Cancer Chemother Pharmacol	WB

## Lagerung

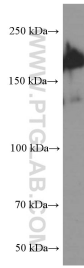
**Lagerungsbedingungen:**  
Bei -20°C lagern. Nach dem Versand ein Jahr lang stabil  
**Lagerungspuffer:**  
PBS mit 0.02% Natriumazid und 50% Glycerin pH 7.3.  
Aliquotieren ist nicht notwendig bei -20°C Lagerung

\*\*\* 20ul-Größen enthalten 0.1% BSA

For technical support and original validation data for this product please contact:  
T: 1 (888) 4PTGLAB (1-888-478-4522) (toll free in USA), or 1(312) 455-8498 (outside USA)  
E: proteintech@ptglab.com  
W: ptglab.com

This product is exclusively available under Proteintech Group brand and is not available to purchase from any other manufacturer.

## Ausgewählte Validierungsdaten



K-562 cells were subjected to SDS PAGE followed by western blot with 66236-1-Ig (SALL4 Antibody) at dilution of 1:1000 incubated at room temperature for 1.5 hours.