

Nur für Forschungszwecke

Beta Tubulin Monoklonaler Antikörper



Katalog-Nr.: 66240-1-Ig **264 Publikationen**

Allgemeine Informationen

Katalog-Nr.: 66240-1-Ig	GenBank-Zugangsnummer: BC000748	Reinigungsmethode: Protein-A-Reinigung
Größe: 150ul, Konzentration: 2000 µg/ml von10381 Nanodrop und 993 µg/ml durch die Bradford-Methode mit BSA als Standard;	GeneID (NCBI): 10381	CloneNo.: 1D4A4
Wirt: Maus	Vollständiger Name: tubulin, beta 3	Empfohlene Verdünnungen: WB 1:20000-1:100000 IP 0.5-4.0 ug für IP und 1:500-1:2000 für WB
Isotyp: IgG2a	Berechnete Masse: 450 aa, 50 kDa	IHC 1:20-1:1000
Immunogen Katalognummer: AG0117	Beobachtete Masse: 50-55 kDa	IF 1:200-1:800

Anwendungen

Geprüfte Anwendungen: IF, IHC, IP, WB, ELISA	Positivkontrollen: WB: HeLa-Zellen, HEK-293-Zellen, HepG2-Zellen, HT-1080.Zellen, Jurkat-Zellen, LNCaP-Zellen, MCF-7-Zellen, NCCIT-Zellen, NIH/3T3-Zellen, ROS1728-Zellen IP: HeLa-Zellen, IHC: humanes Hirngewebe, humanes Mammakarzinomgewebe, Rattenhirngewebe IF: HeLa-Zellen, HepG2-Zellen
In Publikationen genannte Anwendungen: IF, IHC, IP, WB	
Getestete Reaktivität: Hausschwein, Human, Maus, Nematode, Ratte, Zebrafisch	
Zitierte Arten: Hausschwein, Huhn, Human, Kaninchen, Maus, Ratte, Zebrafisch	

Hinweis-IHC: Antigendemaskierung mit TE-Puffer pH 9,0 empfohlen. (*) Wahlweise kann die Antigendemaskierung auch mit Citratpuffer pH 6,0 erfolgen.

Hintergrundinformationen

There are five tubulins in human cells: alpha, beta, gamma, delta, and epsilon. Tubulins are conserved across species. They form heterodimers, which multimerize to form a microtubule filament. An alpha and beta tubulin heterodimer is the basic structural unit of microtubules. The heterodimer does not come apart, once formed. The alpha and beta tubulins, which are each about 55 kDa MW, are homologous but not identical. Alpha and beta tubulins have been widely used as loading controls. Tubulin expression may vary according to resistance to antimicrobial and antimetabolic drugs.

Bemerkenswerte Veröffentlichungen

Verfasser	Pubmed ID	Journal	Anwendung
Yang Wu	31566024	Hum Gene Ther Methods	
Lijuan Hu	29152137	Oncotarget	WB
Zi-Chao Wang	36163178	Cell Death Dis	WB

Lagerung

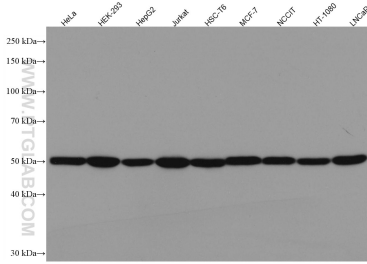
Lagerungsbedingungen:
Bei -20°C lagern. Nach dem Versand ein Jahr lang stabil
Lagerungspuffer:
PBS mit 0.02% Natriumazid und 50% Glycerin pH 7.3.
Aliquotieren ist nicht notwendig bei -20°C Lagerung

***** 20ul-Größen enthalten 0.1% BSA**

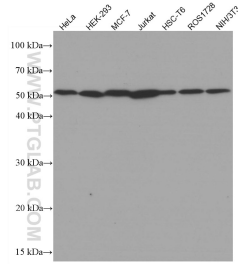
For technical support and original validation data for this product please contact:
T: 1 (888) 4PTGLAB (1-888-478-4522) (toll free in USA), or 1(312) 455-8498 (outside USA)
E: proteintech@ptglab.com
W: ptglab.com

This product is exclusively available under Proteintech Group brand and is not available to purchase from any other manufacturer.

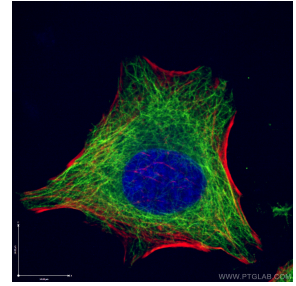
Ausgewählte Validierungsdaten



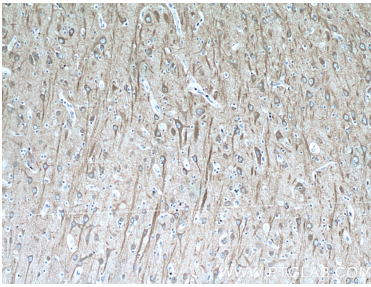
Various lysates were subjected to SDS PAGE followed by western blot with 66240-1-Ig (beta Tubulin antibody) at dilution of 1:200000 incubated at room temperature for 1.5 hours.



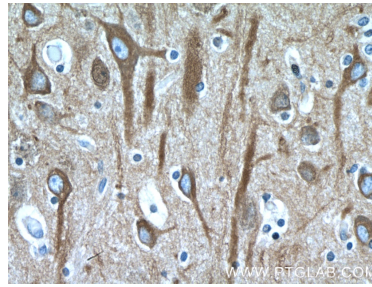
Various lysates were subjected to SDS PAGE followed by western blot with 66240-1-Ig (beta Tubulin antibody) at dilution of 1:100000 incubated at room temperature for 1.5 hours.



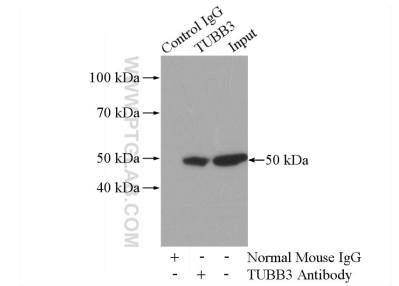
Immunofluorescent analysis of (4% PFA) fixed HeLa cells using 66240-1-Ig (beta Tubulin antibody), at dilution of 1:400 and CoraLite® 488-Conjugated AffiniPure Goat Anti-Mouse IgG(H+L). Red: staining with CoraLite555-Phalloidin.



Immunohistochemical analysis of paraffin-embedded human brain tissue slide using 66240-1-Ig (beta Tubulin antibody) at dilution of 1:400 (under 10x lens).



Immunohistochemical analysis of paraffin-embedded human brain tissue slide using 66240-1-Ig (beta Tubulin antibody) at dilution of 1:400 (under 40x lens).



IP Result of anti-beta Tubulin (IP:66240-1-Ig, 5ug; Detection:66240-1-Ig 1:1000) with HeLa cells lysate 880ug.