

## Allgemeine Informationen

**Katalog-Nr.:**

66241-1-Ig

**GenBank-Zugangsnummer:**

GeneID (NCBI):

Vollständiger Name:

**Reinigungsmethode:**

Protein-A-Reinigung

CloneNo.:

1B10E12

**Empfohlene Verdünnungen:**

IHC 1:200-1:1000

IF 1:150-1:600

**Größe:**

150ul, Konzentration: 1000 µg/ml von Nanodrop und 485 µg/ml durch die Bradford-Methode mit BSA als Standard;

**Wirt:**

Maus

**Isotyp:**

IgG2a

## Anwendungen

**Geprüfte Anwendungen:**

IF, IHC, ELISA

**In Publikationen genannte Anwendungen:**

FC, IF, IHC, WB

**Getestete Reaktivität:**

Human, Maus, Ratte

**Zitierte Arten:**

Human, Maus, Ratte, Zebrafisch

**Positivkontrollen:**

IHC : Mausmilzgewebe,

IF : HeLa-Zellen, L-929-Zellen

**Hinweis-IHC: Antigendemarkierung mit TE-Puffer pH 9,0 empfohlen. (\*) Wahlweise kann die Antigendemarkierung auch mit Citratpuffer pH 6,0 erfolgen.**

## Hintergrundinformationen

Bromodeoxyuridine (5-bromo-2'-deoxyuridine, BrdU, BUdR, BrdUrd) is a synthetic nucleoside that is an analog of thymidine. It can be incorporated into the newly synthesized DNA of replicating cells (during the S phase of the cell cycle), substituting for thymidine during DNA replication. As such, BrdU is used for birth dating and monitoring cell proliferation. BrdU is a toxic and mutagenic substance. It triggers cell death, the formation of teratomas, alters DNA stability, lengthens the cell cycle, and has Omitogenic, transcriptional and translational effects on cells that incorporate it. This antibody does not cross react with Thymidine.

**Protocol for IHC:**

<https://www.ptgcn.com/protocol/66241-1-IgIHC.pdf>

**Protocol for IF:**

<https://www.ptgcn.com/protocol/66241-1-IgIF.pdf>

## Bemerkenswerte Veröffentlichungen

Verfasser	Pubmed ID	Journal	Anwendung
Pingping Zhu	30224759	Nat Cell Biol	IHC,IF
Yang Liu	34481025	J Control Release	IF
Yusuke Matsuno	31477700	Nat Commun	IF

## Lagerung

**Lagerungsbedingungen:**

Bei -20°C lagern. Nach dem Versand ein Jahr lang stabil

**Lagerungspuffer:**

PBS mit 0.02% Natriumazid und 50% Glycerin pH 7.3.

Aliquotieren ist nicht notwendig bei -20°C Lagerung

**\*\*\* 20ul-Größen enthalten 0.1% BSA**

For technical support and original validation data for this product please contact:

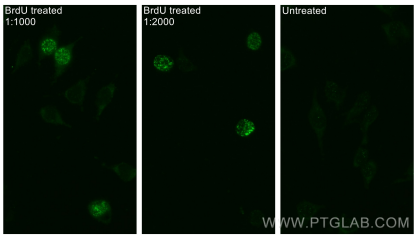
T: 1 (888) 4PTGLAB (1-888-478-4522) (toll free in USA), or 1(312) 455-8498 (outside USA)

E: [proteintech@ptglab.com](mailto:proteintech@ptglab.com)

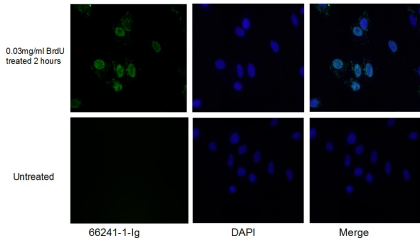
W: [ptglab.com](http://ptglab.com)

**This product is exclusively available under Proteintech Group brand and is not available to purchase from any other manufacturer.**

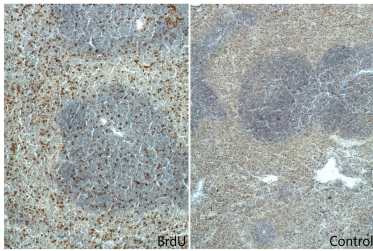
Ausgewählte Validierungsdaten



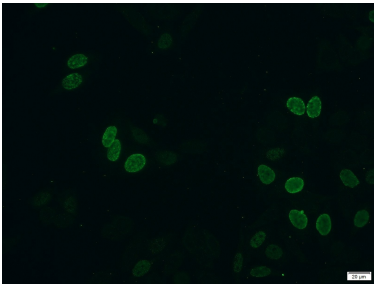
Immunofluorescent analysis of (-20°C Ethanol) fixed L-929 cells using BrdU antibody (66241-1-Ig, Clone: 1B10E12 ) at dilution of 1:1000 and CoraLite®488-Conjugated AffiniPure Goat Anti-Mouse IgG(H+L).



Immunofluorescent analysis of (10% Formaldehyde) fixed HeLa cells using 66241-1-Ig (BrdU antibody) at dilution of 1:300 and Alexa Fluor 488-conjugated AffiniPure Goat Anti-Mouse IgG(H+L).



Immunohistochemical analysis of paraffin-embedded mouse spleen tissue slide (with/without BrdU feeding) using 66241-1-Ig (BrDu Antibody) at dilution of 1:400 (under 10x lens). Heat mediated antigen retrieval with Tris-EDTA buffer (pH 9.0).



Immunofluorescent analysis of HeLa cells (treated with 0.03 mg/ml BrdU for 2 hours) using 66241-1-Ig(BrdU antibody) at dilution of 1:300 and Alexa Fluor 488-conjugated AffiniPure Goat Anti-Mouse IgG(H+L).