

Nur für Forschungszwecke

C4 Gamma Chain Monoklonaler Antikörper



Katalog-Nr.:66242-1-Ig

Allgemeine Informationen

Katalog-Nr.: 66242-1-Ig	GenBank-Zugangsnummer: BC012372	Reinigungsmethode: Protein-A-Reinigung
Größe: 150ul , Konzentration: 1500 µg/ml von720 Nanodrop und 813 µg/ml durch die Bradford-Methode mit BSA als Standard;	GeneID (NCBI): Vollständiger Name: complement component 4A (Rodgers blood group)	CloneNo.: 2G6A7
Wirt: Maus	Berechnete Masse: 1744 aa, 193 kDa	Empfohlene Verdünnungen: WB 1:2000-1:16000 IHC 1:400-1:1600 IF 1:200-1:800
Isotyp: IgG1	Beobachtete Masse: 31 kDa	
Immunogen Katalognummer: AG10449		

Anwendungen

Geprüfte Anwendungen: IF, IHC, WB, ELISA	Positivkontrollen: WB : humanes Plasmagewebe, IHC : humanes Lebergewebe, IF : humanes Lebergewebe,
Getestete Reaktivität: Human	
Hinweis-IHC: Antigenmaskierung mit TE-Puffer pH 9,0 empfohlen. (*) Wahlweise kann die Antigenmaskierung auch mit Citratpuffer pH 6,0 erfolgen.	

Hintergrundinformationen

Complement C4, a component of the classical complement pathway, has an important role in innate immune function. C4 protein is expressed as a single chain precursor which is proteolytically cleaved into a trimer of alpha, beta, and gamma chains (molecular weights 95, 78, and 31 kDa) prior to secretion. The alpha chain is cleaved to release C4 anaphylatoxin, an antimicrobial peptide and a mediator of local inflammation. This antibody raised against 1543-1744aa of human C4-A protein recognizes C4 gamma chain.

Lagerung

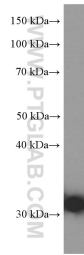
Lagerungsbedingungen:
Bei -20°C lagern. Nach dem Versand ein Jahr lang stabil
Lagerungspuffer:
PBS mit 0.02% Natriumazid und 50% Glycerin pH 7.3.
Aliquotieren ist nicht notwendig bei -20°C Lagerung

*** 20ul-Größen enthalten 0.1% BSA

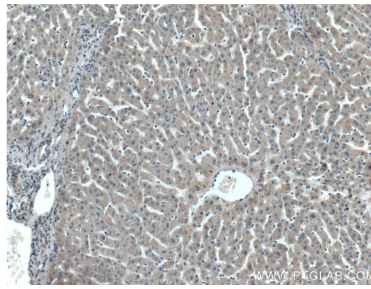
For technical support and original validation data for this product please contact:
T: 1 (888) 4PTGLAB (1-888-478-4522) (toll free in USA), or 1(312) 455-8498 (outside USA)
E: proteintech@ptglab.com
W: ptglab.com

This product is exclusively available under Proteintech Group brand and is not available to purchase from any other manufacturer.

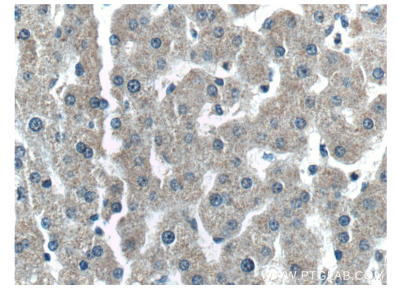
Ausgewählte Validierungsdaten



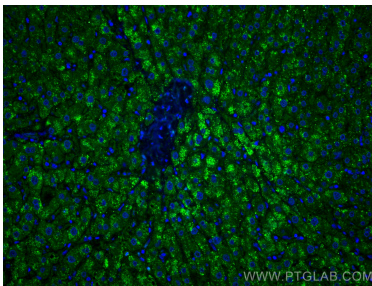
human plasma were subjected to SDS PAGE followed by western blot with 66242-1-Ig (C4 gamma chain antibody) at dilution of 1:8000 incubated at room temperature for 1.5 hours.



Immunohistochemical analysis of paraffin-embedded human liver tissue slide using 66242-1-Ig (C4 gamma chain antibody) at dilution of 1:800 (under 10x lens).



Immunohistochemical analysis of paraffin-embedded human liver tissue slide using 66242-1-Ig (C4 gamma chain antibody) at dilution of 1:800 (under 40x lens).



Immunofluorescent analysis of (4% PFA) fixed human liver tissue using C4 Gamma Chain antibody (66242-1-Ig, Clone: 2G6A7) at dilution of 1:400 and CoraLite®488-Conjugated AffiniPure Goat Anti-Mouse IgG(H+L).