

Allgemeine Informationen

Katalog-Nr.: 66250-1-Ig	GenBank-Zugangsnummer: BC020766	Reinigungsmethode: Protein-A-Reinigung
Größe: 150ul , Konzentration: 3200 µg/ml von1401 Nanodrop und 1600 µg/ml durch die Bradford-Methode mit BSA als Standard;	GeneID (NCBI): 1401	CloneNo.: 3F10A11
Wirt: Maus	Vollständiger Name: C-reactive protein, pentraxin-related	Empfohlene Verdünnungen: WB 1:2000-1:10000 IHC 1:50-1:500 IF 1:50-1:500
Isotyp: IgG2a	Berechnete Masse: 224 aa, 25 kDa	
Immunogen Katalognummer: AG9883	Beobachtete Masse: 27 kDa	

Anwendungen

Geprüfte Anwendungen:

IF, IHC, WB,ELISA

In Publikationen genannte Anwendungen:

IF, IHC, WB

Getestete Reaktivität:

Hausschwein, Human, Maus, Ratte

Zitierte Arten:

Affe, Human, Maus, Ratte

Hinweis-IHC: Antigendemaskierung mit TE-Puffer pH 9,0 empfohlen. (*) Wahlweise kann die Antigendemaskierung auch mit Citratpuffer pH 6,0 erfolgen.

Positivkontrollen:

WB : mit Bakterien injiziertes Serum aus der Maus, Hausschwein-Lebergewebe, mit Bakteriengewebe injiziertes Serum aus der Maus, Rattenlebergewebe

IHC : humanes Lebergewebe,

IF : humanes Lebergewebe,

Hintergrundinformationen

C-reactive protein (CRP) is an acute-phase serum protein synthesized by the liver in response to interleukin-6 (IL-6) during inflammation. The name of CRP derives from its ability to react with the C polysaccharide of *Streptococcus pneumoniae*. CRP is an annular, pentameric protein that belongs to the pentraxin family of proteins. CRP displays several functions associated with host defense: it promotes agglutination, bacterial capsular swelling, phagocytosis and complement fixation through its calcium-dependent binding to phosphorylcholine. It is used mainly as a marker of inflammation.

Bemerkenswerte Veröffentlichungen

Verfasser	Pubmed ID	Journal	Anwendung
Amrita K Cheema	35675853	Int J Radiat Oncol Biol Phys	WB
Shaoning Li	33599398	Brain Behav	WB,IHC
Anika Alberts	33363539	Front Immunol	WB

Lagerung

Lagerungsbedingungen:

Bei -20°C lagern. Nach dem Versand ein Jahr lang stabil

Lagerungspuffer:

PBS mit 0.02% Natriumazid und 50% Glycerin pH 7.3.

Aliquotieren ist nicht notwendig bei -20°C Lagerung

***** 20ul-Größen enthalten 0.1% BSA**

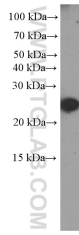
For technical support and original validation data for this product please contact:

T: 1 (888) 4PTGLAB (1-888-478-4522) (toll free in USA), or 1(312) 455-8498 (outside USA)

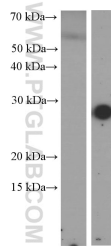
E: proteintech@ptglab.com
W: ptglab.com

This product is exclusively available under Proteintech Group brand and is not available to purchase from any other manufacturer.

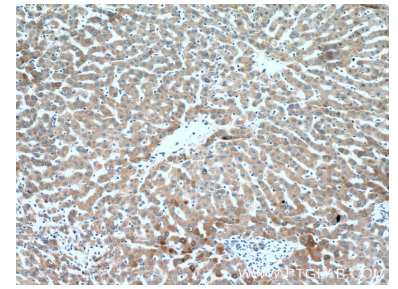
Ausgewählte Validierungsdaten



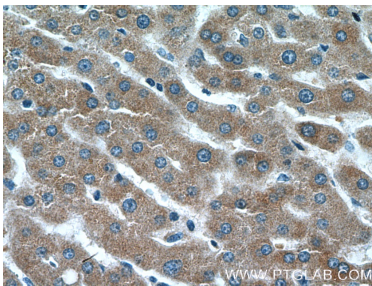
Serum from mouse injected with bacteria were subjected to SDS PAGE followed by western blot with 66250-1-Ig (CRP Antibody) at dilution of 1:2000. Horseradish peroxidase conjugated protein A was used for signal developing instead of secondary antibody incubated at room temperature for 1.5 hours.



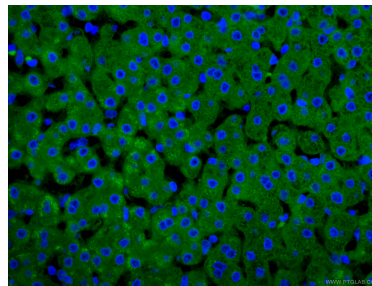
Serum from normal mouse (left) and mouse injected with bacteria (right) were subjected to SDS PAGE followed by western blot with 66250-1-Ig (CRP Antibody) at dilution of 1:1000. Horseradish peroxidase conjugated protein A was used for signal developing instead of secondary antibody incubated at room temperature for 1.5 hours.



Immunohistochemical analysis of paraffin-embedded human liver tissue slide using 66250-1-Ig (CRP Antibody) at dilution of 1:200 (under 10x lens).



Immunohistochemical analysis of paraffin-embedded human liver tissue slide using 66250-1-Ig (CRP Antibody) at dilution of 1:200 (under 40x lens).



Immunofluorescent analysis of (4% PFA) fixed human liver tissue using 66250-1-Ig (CRP antibody) at dilution of 1:100 and Coralite488-Conjugated AffiniPure Goat Anti-Mouse IgG(H+L).