

Nur für Forschungszwecke

CD11a/Integrin Alpha L Monoklonaler Antikörper



Katalog-Nr.:66256-1-Ig

Allgemeine Informationen

Katalog-Nr.: 66256-1-Ig	GenBank-Zugangsnummer: BC008777	Reinigungsmethode: Protein-G-Reinigung
Größe: 150ul, Konzentration: 1333 µg/ml durch die Bradford-Methode mit BSA als Standard;	GeneID (NCBI): 3683	CloneNo.: 1E3H12
Wirt: Maus	Vollständiger Name: integrin, alpha L (antigen CD11A (p180), lymphocyte function- associated antigen 1; alpha polypeptide)	Empfohlene Verdünnungen: IHC 1:20-1:200 IF 1:200-1:800
Isotyp: IgG1	Berechnete Masse: 129 kDa	
Immunogen Katalognummer: AG7813		

Anwendungen

Geprüfte Anwendungen: IF, IHC, ELISA	Positivkontrollen: IHC : humanes Tonsillitisgewebe, IF : humanes Tonsillitisgewebe,
Getestete Reaktivität: Human	
Hinweis-IHC: Antigendemaskierung mit TE-Puffer pH 9,0 empfohlen. (*) Wahlweise kann die Antigendemaskierung auch mit Citratpuffer pH 6,0 erfolgen.	

Hintergrundinformationen

CD11a, also known as integrin αL or LFA-1α, is a 170-180 kDa transmembrane glycoprotein that forms a heterodimer with CD18 (PMID: 7027264; 1672643). CD11a/CD18 (LFA-1) is expressed by all leukocytes and mediates cell adhesion through interactions with its ligands, intercellular adhesion molecule 1 (ICAM-1), ICAM-2, and ICAM-3 (PMID: 7479767). CD11a/CD18 also functions in lymphocyte costimulatory signaling (PMID: 1972160).

Lagerung

Lagerungsbedingungen:
Bei -20°C lagern. Nach dem Versand ein Jahr lang stabil
Lagerungspuffer:
PBS mit 0.02% Natriumazid und 50% Glycerin pH 7.3.
Aliquotieren ist nicht notwendig bei -20°C Lagerung

*** 20ul-Größen enthalten 0.1% BSA

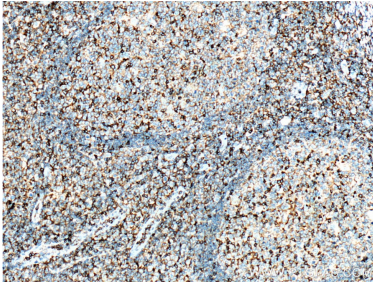
For technical support and original validation data for this product please contact:

T: 1 (888) 4PTGLAB (1-888-478-4522) (toll free
in USA), or 1(312) 455-8498 (outside USA)

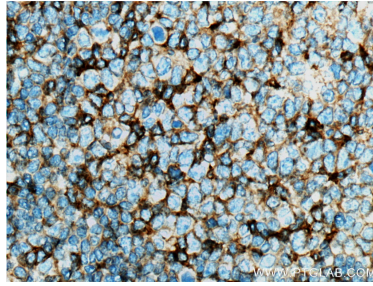
E: proteintech@ptglab.com
W: ptglab.com

This product is exclusively available under Proteintech Group brand and is not available to purchase from any other manufacturer.

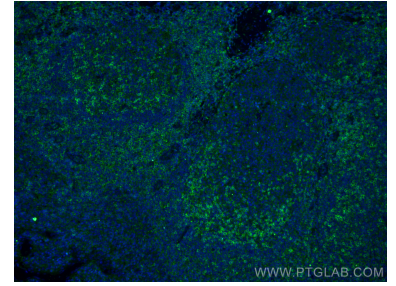
Ausgewählte Validierungsdaten



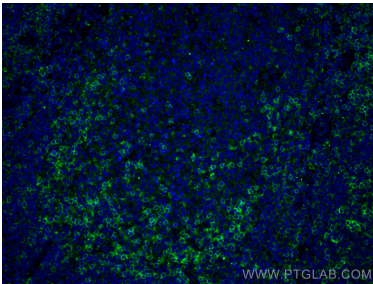
Immunohistochemical analysis of paraffin-embedded human tonsillitis tissue slide using 66256-1-Ig (CD11a/Integrin alpha-L antibody) at dilution of 1:500 (under 10x lens. Heat mediated antigen retrieval with Tris-EDTA buffer (pH 9.0).



Immunohistochemical analysis of paraffin-embedded human tonsillitis tissue slide using 66256-1-Ig (CD11a/Integrin alpha-L antibody) at dilution of 1:500 (under 40x lens. Heat mediated antigen retrieval with Tris-EDTA buffer (pH 9.0).



Immunofluorescent analysis of (4% PFA) fixed human tonsillitis tissue using CD11a/Integrin Alpha L antibody (66256-1-Ig, Clone: 1E3H12) at dilution of 1:400 and CoraLite@488-Conjugated AffiniPure Goat Anti-Mouse IgG(H+L).



Immunofluorescent analysis of (4% PFA) fixed human tonsillitis tissue using CD11a/Integrin Alpha L antibody (66256-1-Ig, Clone: 1E3H12) at dilution of 1:400 and CoraLite@488-Conjugated AffiniPure Goat Anti-Mouse IgG(H+L).