

Allgemeine Informationen

Katalog-Nr.: 66261-1-Ig	GenBank-Zugangsnummer: BC010860	Reinigungsmethode: Protein-G-Reinigung
Größe: 150ul , Konzentration: 2500 µg/ml von5054 Nanodrop und 1000 µg/ml durch die Bradford-Methode mit BSA als Standard;	GeneID (NCBI): 5054	CloneNo.: 1H4A5
Wirt: Maus	Vollständiger Name: serpin peptidase inhibitor, clade E (nexin, plasminogen activator inhibitor type 1), member 1	Empfohlene Verdünnungen: WB 1:5000-1:50000 IHC 1:50-1:500 IF 1:200-1:800
Isotyp: IgG1	Berechnete Masse: 402 aa, 45 kDa	
Immunogen Katalognummer: AG22411	Beobachtete Masse: 45-50 kDa	

Anwendungen

Geprüfte Anwendungen:

IF, IHC, WB, ELISA

In Publikationen genannte Anwendungen:

IF, IHC, WB

Getestete Reaktivität:

Hausschwein, Human, Maus, Ratte

Zitierte Arten:

Hausschwein, Human, Maus, Ratte

Hinweis-IHC: Antigendemaskierung mit TE-Puffer pH 9,0 empfohlen. (*) Wahlweise kann die Antigendemaskierung auch mit Citratpuffer pH 6,0 erfolgen.

Positivkontrollen:

WB : human peripheral blood platelets, Hausschwein-Lebergewebe, HuH-7-Zellen, Mauslebergewebe, Rattenlebergewebe, SH-SY5Y-Zellen, U-251-Zellen

IHC : humanes Nierengewebe,

IF : HepG2-Zellen,

Hintergrundinformationen

SERPINE1, also named Plasminogen activator inhibitor type 1 (PAI-1), is a member of the serine protease inhibitor (SERPIN) superfamily. PAI-1 is the principal inhibitor of tissue plasminogen activator (tPA) and uPA, and hence is an inhibitor of fibrinolysis. Defects in this gene are the cause of plasminogen activator inhibitor-1 deficiency (PAI-1 deficiency), and high concentrations of the gene product are associated with thrombophilia. The mature 379-residue protein had a calculated unglycosylated molecular mass of 42.7 kD. Three putative glycosylation sites were found.

Bemerkenswerte Veröffentlichungen

Verfasser	Pubmed ID	Journal	Anwendung
Tong Lin	33002827	Phytomedicine	WB
Xinh-Xinh Nguyen	34830489	Int J Mol Sci	WB
Mingming Han	34003736	Am J Respir Cell Mol Biol	WB

Lagerung

Lagerungsbedingungen:

Bei -20°C lagern. Nach dem Versand ein Jahr lang stabil

Lagerungspuffer:

PBS mit 0.02% Natriumazid und 50% Glycerin pH 7.3.

Aliquotieren ist nicht notwendig bei -20°C Lagerung

***** 20ul-Größen enthalten 0.1% BSA**

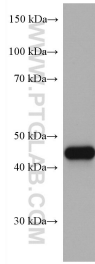
For technical support and original validation data for this product please contact:

T: 1 (888) 4PTGLAB (1-888-478-4522) (toll free in USA), or 1(312) 455-8498 (outside USA)

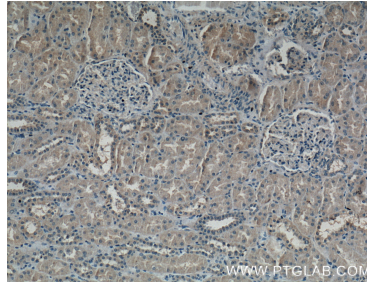
E: proteintech@ptglab.com
W: ptglab.com

This product is exclusively available under Proteintech Group brand and is not available to purchase from any other manufacturer.

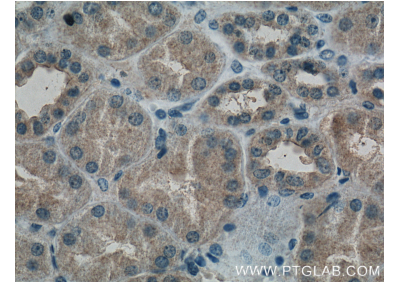
Ausgewählte Validierungsdaten



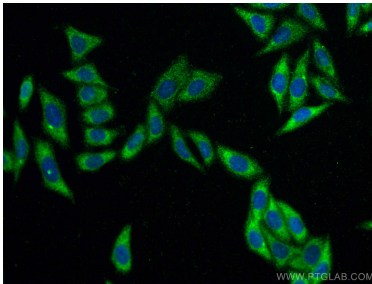
human peripheral blood platelets were subjected to SDS PAGE followed by western blot with 66261-1-Ig (PAI-1 antibody) at dilution of 1:10000 incubated at room temperature for 1.5 hours.



Immunohistochemical analysis of paraffin-embedded human kidney tissue slide using 66261-1-Ig (PAI-1 antibody at dilution of 1:200 (under 10x lens).



Immunohistochemical analysis of paraffin-embedded human kidney tissue slide using 66261-1-Ig (PAI-1 antibody at dilution of 1:200 (under 40x lens).



Immunofluorescent analysis of (-20°C Ethanol) fixed HepG2 cells using PAI-1 antibody (66261-1-Ig, Clone: 1H4A5) at dilution of 1:400 and CoraLite®488-Conjugated AffiniPure Goat Anti-Mouse IgG(H+L).