

Allgemeine Informationen

Katalog-Nr.: 66263-1-Ig	GenBank-Zugangsnummer: BC021562	Reinigungsmethode: Protein-A-Reinigung
Größe: 150ul , Konzentration: 3100 µg/ml von10818 Nanodrop und 1493 µg/ml durch die Bradford-Methode mit BSA als Standard;	GeneID (NCBI): 4E10H12	CloneNo.: 4E10H12
Wirt: Maus	Vollständiger Name: fibroblast growth factor receptor substrate 2	Empfohlene Verdünnungen: WB 1:500-1:2000 IHC 1:50-1:500 IF 1:200-1:800
Isotyp: IgG3	Berechnete Masse: 60 kDa	
Immunogen Katalognummer: AG19299	Beobachtete Masse: 68 kDa	

Anwendungen

Geprüfte Anwendungen: IF, IHC, WB,ELISA	Positivkontrollen: WB : MCF-7-Zellen, HEK-293-Zellen, HeLa-Zellen IHC : humanes Prostatakarzinomgewebe, IF : MCF-7-Zellen,
Getestete Reaktivität: Human	
Hinweis-IHC: Antigenmaskierung mit TE-Puffer pH 9,0 empfohlen. (*) Wahlweise kann die Antigenmaskierung auch mit Citratpuffer pH 6,0 erfolgen.	

Hintergrundinformationen

Fibroblast growth factor (FGF) receptor substrate 2 (FRS2) has an alternative name as SNT-1, it is an adapter protein that links activated FGR and NGF receptors to downstream signaling pathways. FGF receptor substrates (FRS2 and FRS3) are key adaptor proteins that mediate FGF-FGFR signalling in benign as well as malignant tissue. FRS2 is a 508 amino-acid protein, which is phosphorylated on tyrosine residues. The molecular weight of non-phosphorylated FRS2 is 57-68 kDa, but phosphorylated FRS2 is 80-90 kDa. Phosphorylation of FRS2 is associated with activation of a number of MAP kinases. Allele-specific regulation of FGFR2 mRNA expression with a mildly increased breast cancer risk has been reported.

Lagerung

Lagerungsbedingungen:
Bei -20°C lagern. Nach dem Versand ein Jahr lang stabil

Lagerungspuffer:
PBS mit 0.02% Natriumazid und 50% Glycerin pH 7.3.

Aliquotieren ist nicht notwendig bei -20°C Lagerung

*** 20ul-Größen enthalten 0.1% BSA

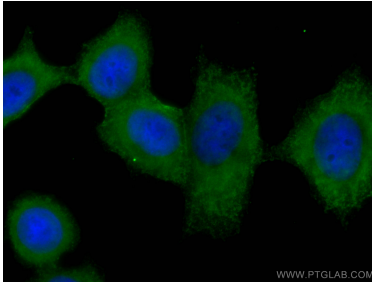
For technical support and original validation data for this product please contact:

T: 1 (888) 4PTGLAB (1-888-478-4522) (toll free
in USA), or 1(312) 455-8498 (outside USA)

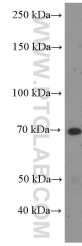
E: proteintech@ptglab.com
W: ptglab.com

This product is exclusively available under Proteintech Group brand and is not available to purchase from any other manufacturer.

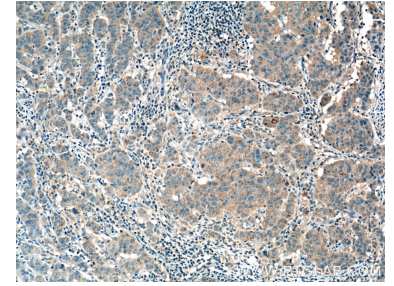
Ausgewählte Validierungsdaten



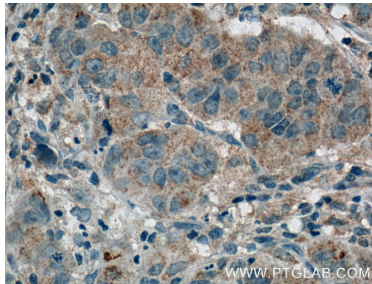
Immunofluorescent analysis of (-20°C Ethanol) fixed MCF-7 cells using FRS2 antibody (66263-1-Ig, Clone: 4E10H12) at dilution of 1:400 and CoraLite®488-Conjugated AffiniPure Goat Anti-Mouse IgG(H+L).



MCF-7 cells were subjected to SDS PAGE followed by western blot with 66263-1-Ig (FRS2 antibody) at dilution of 1:1000 incubated at room temperature for 1.5 hours.



Immunohistochemical analysis of paraffin-embedded human prostate cancer tissue slide using 66263-1-Ig (FRS2 Antibody) at dilution of 1:400 (under 10x lens). Heat mediated antigen retrieval with Tris-EDTA buffer (pH 9.0).



Immunohistochemical analysis of paraffin-embedded human prostate cancer tissue slide using 66263-1-Ig (FRS2 Antibody) at dilution of 1:400 (under 40x lens). Heat mediated antigen retrieval with Tris-EDTA buffer (pH 9.0).