

Nur für Forschungszwecke

# KGA/GAC Monoklonaler Antikörper



Katalog-Nr.:66265-1-Ig

Vorgestelltes Produkt

6 Publikationen

## Allgemeine Informationen

Katalog-Nr.:  
66265-1-Ig

Größe:  
150ul, Konzentration: 1900 µg/ml von2744  
Nanodrop und 1000 µg/ml durch die  
Bradford-Methode mit BSA als  
Standard;

Wirt:  
Maus

Isotyp:  
IgG2b

Immunogen Katalognummer:  
AG24227

GenBank-Zugangsnummer:  
BC038507

GeneID (NCBI):

Vollständiger Name:  
glutaminase

Berechnete Masse:  
669 aa, 73 kDa

Beobachtete Masse:  
58 kDa, 65 kDa

Reinigungsmethode:  
Protein-A-Reinigung

CloneNo.:  
3A12A1

Empfohlene Verdünnungen:  
WB 1:5000-1:50000  
IHC 1:50-1:500  
IF 1:50-1:500

## Anwendungen

Geprüfte Anwendungen:

IF, IHC, WB, ELISA

In Publikationen genannte Anwendungen:

IF, WB

Getestete Reaktivität:

Hausschwein, Human, Maus, Ratte

Zitierte Arten:

Human, Maus

**Hinweis-IHC: Antigenmaskierung mit TE-Puffer pH 9,0 empfohlen. (\*) Wahlweise kann die Antigenmaskierung auch mit Citratpuffer pH 6,0 erfolgen.**

Positivkontrollen:

WB : NIH/3T3-Zellen, fetales humanes Hirngewebe, HEK-293-Zellen, Rattenlebergewebe, U-251-Zellen

IHC : humanes Gliomgewebe, Maushirngewebe

IF : Maushirngewebe, HepG2-Zellen, L02-Zellen

## Hintergrundinformationen

GLS, also named as GLS1 and KIAA0838, belongs to the glutaminase family. It catalyzes the first reaction in the primary pathway for the renal catabolism of glutamine. Glutaminase-, glutamate-, and taurine-immunoreactive neurons develop neurofibrillary tangles in Alzheimer's disease(PMID:1672808).The glutaminase band in AA/C1 cells is more intense than in HT29 cells, in accordance with measurements of glutaminase activity, and had the same molecular mass of approx. 63 kDa. The bands for both cell lines are clearly different in size from both rat liver glutaminase (58 kDa) and rat kidney glutaminase (65 kDa)(PMID:12408749). It also reveals a molecular weight of 83-84 kDa as a phosphate-dependent glutaminase(PMID:447624;7512428). It has 3 isoforms named as KGA, GAM, GAC. This antibody can recognize KGA and GAC.

## Bemerkenswerte Veröffentlichungen

Verfasser	Pubmed ID	Journal	Anwendung
Bin Jiang	35381197	Mol Cell	WB,IF
Yifan Feng	35345831	Oxid Med Cell Longev	IF
Tokio Terado	35894141	Int J Oncol	WB

## Lagerung

Lagerungsbedingungen:

Bei -20°C lagern. Nach dem Versand ein Jahr lang stabil

Lagerungspuffer:

PBS mit 0.02% Natriumazid und 50% Glycerin pH 7.3.

Aliquotieren ist nicht notwendig bei -20°C Lagerung

\*\*\* 20ul-Größen enthalten 0.1% BSA

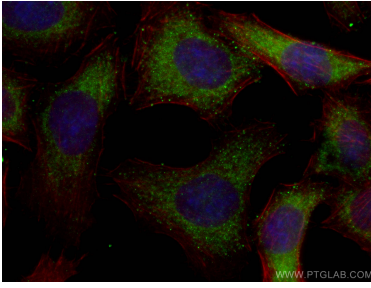
For technical support and original validation data for this product please contact:

T: 1 (888) 4PTGLAB (1-888-478-4522) (toll free in USA), or 1(312) 455-8498 (outside USA)

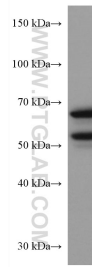
E: proteintech@ptglab.com  
W: ptglab.com

This product is exclusively available under Proteintech Group brand and is not available to purchase from any other manufacturer.

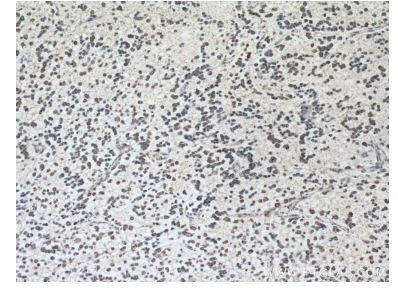
## Ausgewählte Validierungsdaten



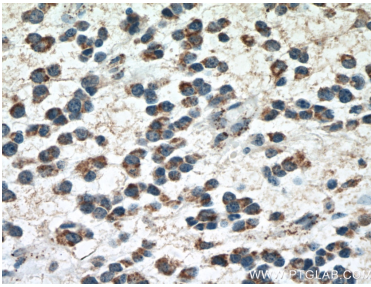
Immunofluorescent analysis of (-20°C Ethanol) fixed L02 cells using KGA/GAC antibody (66265-1-Ig, Clone: 3A12A1) at dilution of 1:400 and CoraLite®488-Conjugated AffiniPure Goat Anti-Mouse IgG(H+L), CL594-Phalloidin (red).



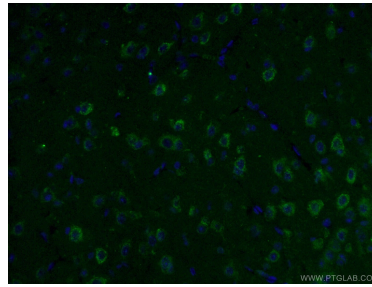
NIH/3T3 cells were subjected to SDS PAGE followed by western blot with 66265-1-Ig (GLS antibody) at dilution of 1:20000 incubated at room temperature for 1.5 hours.



Immunohistochemical analysis of paraffin-embedded human gliomas tissue slide using 66265-1-Ig (GLS antibody) at dilution of 1:200 (under 10x lens. Heat mediated antigen retrieval with Tris-EDTA buffer (pH 9.0).



Immunohistochemical analysis of paraffin-embedded human gliomas tissue slide using 66265-1-Ig (GLS antibody) at dilution of 1:200 (under 40x lens. Heat mediated antigen retrieval with Tris-EDTA buffer (pH 9.0).



Immunofluorescent analysis of (4% PFA) fixed mouse brain tissue using 66265-1-Ig (GLS antibody) at dilution of 1:100 and Alexa Fluor 488-conjugated AffiniPure Goat Anti-Mouse IgG(H+L).