

Nur für Forschungszwecke

KGA-Specific Monoklonaler Antikörper

Katalog-Nr.:66265-2-Ig



Allgemeine Informationen

Katalog-Nr.: 66265-2-Ig	GenBank-Zugangsnummer: BC038507	Reinigungsmethode: Protein-G-Reinigung
Größe: 150ul , Konzentration: 1400 µg/ml von2744 Nanodrop und 1000 µg/ml durch die Bradford-Methode mit BSA als Standard;	GeneID (NCBI): 2744	CloneNo.: 1B11A11
Wirt: Maus	Vollständiger Name: glutaminase	Empfohlene Verdünnungen: WB 1:5000-1:50000 IHC 1:1000-1:4000
Isotyp: IgG1	Berechnete Masse: 669 aa, 73 kDa	
Immunogen Katalognummer: AG24227	Beobachtete Masse: 65 kDa	

Anwendungen

Geprüfte Anwendungen: IHC, WB,ELISA	Positivkontrollen: WB : Maushirngewebe, COLO 320-Zellen, HEK-293-Zellen, NIH/3T3-Zellen IHC : Maushirngewebe,
Getestete Reaktivität: Human, Maus, Ratte	
Hinweis-IHC: Antigenmaskierung mit TE-Puffer pH 9,0 empfohlen. (*) Wahlweise kann die Antigenmaskierung auch mit Citratpuffer pH 6,0 erfolgen.	

Hintergrundinformationen

GLS, also named as GLS1 and KIAA0838, belongs to the glutaminase family. It catalyzes the first reaction in the primary pathway for the renal catabolism of glutamine. Glutaminase-, glutamate-, and taurine-immunoreactive neurons develop neurofibrillary tangles in Alzheimer's disease. The glutaminase band in AA/C1 cells is more intense than in HT29 cells, in accordance with measurements of glutaminase activity, and had the same molecular mass of approx. 63 kDa. The bands for both cell lines are clearly different in size from both rat liver glutaminase (58 kDa) and rat kidney glutaminase (65 kDa)(PMID: 12408749). It also reveals a molecular weight of 83-84 kDa as a phosphate-dependent glutaminase(PMID: 447624;7512428). It has 3 isoforms produced by alternative splicing named as KGA, GAM, GAC. This antibody is specific to KGA.

Lagerung

Lagerungsbedingungen:
Bei -20°C lagern. Nach dem Versand ein Jahr lang stabil
Lagerungspuffer:
PBS mit 0.02% Natriumazid und 50% Glycerin pH 7.3.
Aliquotieren ist nicht notwendig bei -20°C Lagerung

*** 20ul-Größen enthalten 0.1% BSA

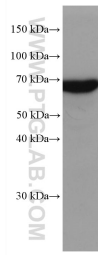
For technical support and original validation data for this product please contact:

T: 1 (888) 4PTGLAB (1-888-478-4522) (toll free in USA), or 1(312) 455-8498 (outside USA)

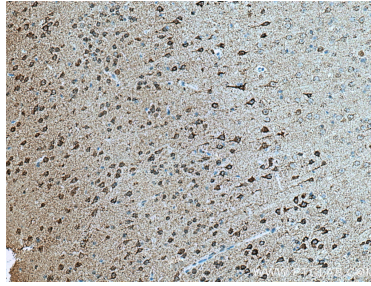
E: proteintech@ptglab.com
W: ptglab.com

This product is exclusively available under Proteintech Group brand and is not available to purchase from any other manufacturer.

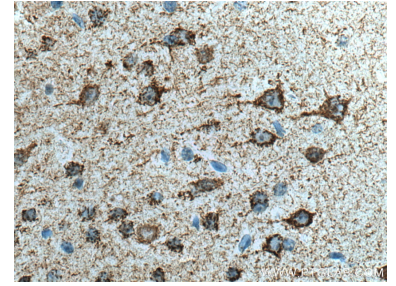
Ausgewählte Validierungsdaten



mouse brain tissue were subjected to SDS PAGE followed by western blot with 66265-2-Ig (GLS antibody) at dilution of 1:20000 incubated at room temperature for 1.5 hours.



Immunohistochemical analysis of paraffin-embedded mouse brain tissue slide using 66265-2-Ig (GLS antibody) at dilution of 1:2000 (under 10x lens). Heat mediated antigen retrieval with Tris-EDTA buffer (pH 9.0).



Immunohistochemical analysis of paraffin-embedded mouse brain tissue slide using 66265-2-Ig (GLS antibody) at dilution of 1:2000 (under 40x lens). Heat mediated antigen retrieval with Tris-EDTA buffer (pH 9.0).