

Allgemeine Informationen

Katalog-Nr.:

66266-1-Ig

Größe:

150ul, Konzentration: 2900 µg/ml von 27286

Nanodrop und 1500 µg/ml durch die Bradford-Methode mit BSA als Standard;

Wirt:

Maus

Isotyp:

IgG2b

Immunogen Katalognummer:

AG8084

GenBank-Zugangsnummer:

BC020733

GeneID (NCBI):

27286

Vollständiger Name:

sushi-repeat-containing protein, X-linked 2

Berechnete Masse:

465 aa, 53 kDa

Beobachtete Masse:

53 kDa

Reinigungsmethode:

Protein-A-Reinigung

CloneNo.:

2A1D7

Empfohlene Verdünnungen:

WB 1:500-1:2000

IHC 1:200-1:800

IF 1:50-1:500

Anwendungen

Geprüfte Anwendungen:

IF, IHC, WB, ELISA

In Publikationen genannte Anwendungen:

IF, IHC, WB

Getestete Reaktivität:

Hausschwein, Human, Maus

Zitierte Arten:

Human, Maus

Hinweis-IHC: Antigendemaskierung mit TE-Puffer pH 9,0 empfohlen. (*) Wahlweise kann die Antigendemaskierung auch mit Citratpuffer pH 6,0 erfolgen.

Positivkontrollen:

WB : Hausschwein-Lungengewebe, A549-Zellen

IHC : Maushirngewebe,

IF : A549-Zellen,

Hintergrundinformationen

SRPX2 (sushi-repeat-containing protein, X-linked 2) is a secreted protein expressed in neurons of the human adult brain, including the rolandic area (PMID: 20874700). Firstly described as sushi-repeat protein up-regulated in leukemia (SPRUL) in leukemia cells with dysregulated expression at the transcriptional level, SRPX2 has been recently shown as a multifunctional protein. SRPX2 is a ligand for uPAR, the urokinase-type plasminogen activator (uPA) receptor (PMID: 18718938). It is involved in seizure disorders, angiogenesis and cellular adhesion (PMID: 22242148; 19667118; 16497722). The involvement of SRPX2 in disorders of language cortex suggests it has an important role in the perisylvian region critical for language and cognitive development (PMID: 16497722).

Bemerkenswerte Veröffentlichungen

Verfasser	Pubmed ID	Journal	Anwendung
Meng Zhang	29881288	Onco Targets Ther	WB, IHC
Mehwish Anwer	29663392	J Comp Neurol	WB, IHC, IF

Lagerung

Lagerungsbedingungen:

Bei -20°C lagern. Nach dem Versand ein Jahr lang stabil

Lagerungspuffer:

PBS mit 0.02% Natriumazid und 50% Glycerin pH 7.3.

Aliquotieren ist nicht notwendig bei -20°C Lagerung

*** 20ul-Größen enthalten 0.1% BSA

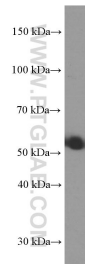
For technical support and original validation data for this product please contact:

T: 1 (888) 4PTGLAB (1-888-478-4522) (toll free in USA), or 1(312) 455-8498 (outside USA)

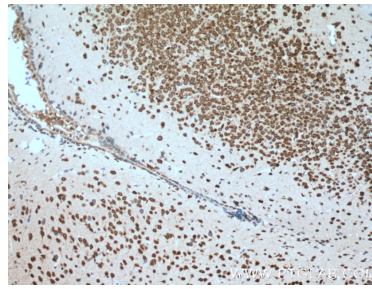
E: proteintech@ptglab.com
W: ptglab.com

This product is exclusively available under Proteintech Group brand and is not available to purchase from any other manufacturer.

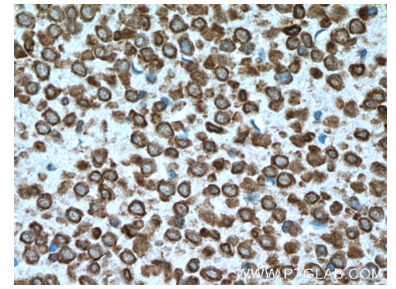
Ausgewählte Validierungsdaten



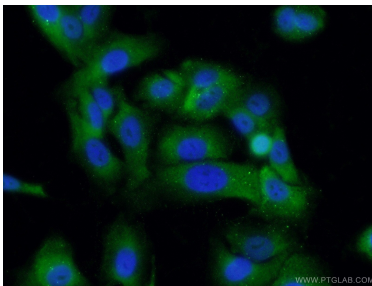
pig lung tissue were subjected to SDS PAGE followed by western blot with 66266-1-Ig (SRPX2 antibody) at dilution of 1:1000 incubated at room temperature for 1.5 hours.



Immunohistochemical analysis of paraffin-embedded mouse brain tissue slide using 66266-1-Ig (SRPX2 Antibody) at dilution of 1:400 (under 10x lens). Heat mediated antigen retrieval with Tris-EDTA buffer (pH 9.0).



Immunohistochemical analysis of paraffin-embedded mouse brain tissue slide using 66266-1-Ig (SRPX2 Antibody) at dilution of 1:400 (under 40x lens). Heat mediated antigen retrieval with Tris-EDTA buffer (pH 9.0).



Immunofluorescent analysis of (-20°C Ethanol) fixed A549 cells using 66266-1-Ig(SRPX2 antibody) at dilution of 1:100 and Alexa Fluor 488-conjugated AffiniPure Goat Anti-Mouse IgG(H+L).