

Nur für Forschungszwecke

L2HGDH Monoklonaler Antikörper

Katalog-Nr.:66269-1-Ig



Allgemeine Informationen

| | | |
|---|--|---|
| Katalog-Nr.: 66269-1-Ig | GenBank-Zugangsnummer: BC006117 | Reinigungsmethode: Protein-A-Reinigung |
| Größe: 150ul , Konzentration: 2100 µg/ml von79944 Nanodrop und 1320 µg/ml durch die Bradford-Methode mit BSA als Standard; | GeneID (NCBI): 79944 | CloneNo.: 3D11C2 |
| Wirt: Maus | Vollständiger Name: L-2-hydroxyglutarate dehydrogenase | Empfohlene Verdünnungen: WB 1:500-1:2000 IHC 1:100-1:400 IF 1:200-1:800 |
| Isotyp: IgG2a | Berechnete Masse: 463aa,50 kDa; 441aa,49 kDa | |
| Immunogen Katalognummer: AG8382 | Beobachtete Masse: 45 kDa | |

Anwendungen

| | |
|---|---|
| Geprüfte Anwendungen: IF, IHC, WB, ELISA | Positivkontrollen: WB : Hausschwein-Hirngewebe, MCF-7-Zellen IHC : humanes Mammakarzinomgewebe, IF : humanes Mammakarzinomgewebe, |
| Getestete Reaktivität: Hausschwein, Human | |
| Hinweis-IHC: Antigenmaskierung mit TE-Puffer pH 9,0 empfohlen. (*) Wahlweise kann die Antigenmaskierung auch mit Citratpuffer pH 6,0 erfolgen. | |

Hintergrundinformationen

L2HGDH(L-2-hydroxyglutarate dehydrogenase, mitochondrial) is also named as duranin, C14orf160 and belongs to the L2HGDH family. The putative L2HGDH is predicted to be targeted to the mitochondria where its mitochondrial targeting sequence is presumably removed(PMID:16005139). Defects in L2HGDH are the cause of L-2-hydroxyglutaric aciduria (L2HGA). It has 2 isoforms produced by alternative splicing with the molecular weight of 50 kDa and 48 kDa. L2HGDH also can be detected as ~45kD due to the 51aa transit peptide cleaved.

Lagerung

Lagerungsbedingungen:
Bei -20°C lagern. Nach dem Versand ein Jahr lang stabil
Lagerungspuffer:
PBS mit 0.02% Natriumazid und 50% Glycerin pH 7.3.
Aliquotieren ist nicht notwendig bei -20°C Lagerung

*** 20ul-Größen enthalten 0.1% BSA

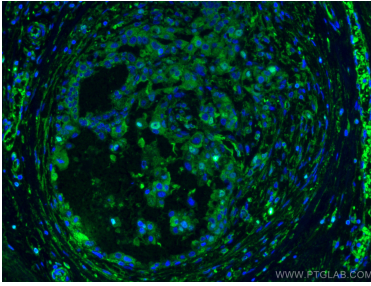
For technical support and original validation data for this product please contact:

T: 1 (888) 4PTGLAB (1-888-478-4522) (toll free in USA), or 1(312) 455-8498 (outside USA)

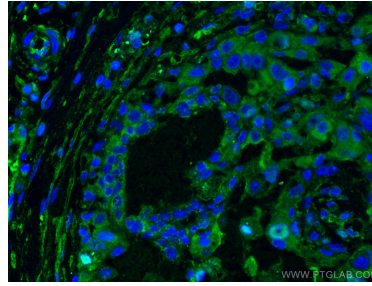
E: proteintech@ptglab.com
W: ptglab.com

This product is exclusively available under Proteintech Group brand and is not available to purchase from any other manufacturer.

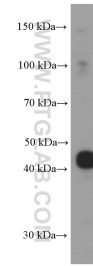
Ausgewählte Validierungsdaten



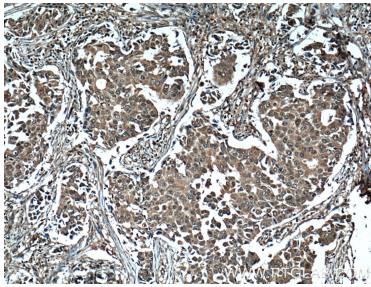
Immunofluorescent analysis of (4% PFA) fixed human breast cancer tissue using L2HGDH antibody (66269-1-Ig, Clone: 3D11C2) at dilution of 1:400 and CoraLite®488-Conjugated AffiniPure Goat Anti-Mouse IgG(H+L).



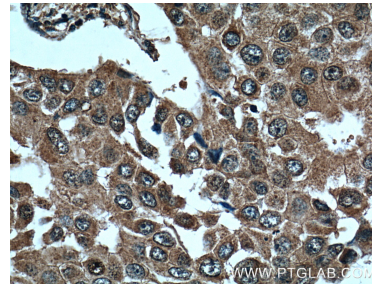
Immunofluorescent analysis of (4% PFA) fixed human breast cancer tissue using L2HGDH antibody (66269-1-Ig, Clone: 3D11C2) at dilution of 1:400 and CoraLite®488-Conjugated AffiniPure Goat Anti-Mouse IgG(H+L).



pig brain tissue were subjected to SDS PAGE followed by western blot with 66269-1-Ig (L2HGDH Antibody) at dilution of 1:1000 incubated at room temperature for 1.5 hours.



Immunohistochemical analysis of paraffin-embedded human breast cancer tissue slide using 66269-1-Ig (L2HGDH Antibody) at dilution of 1:200 (under 10x lens). Heat mediated antigen retrieval with Tris-EDTA buffer (pH 9.0).



Immunohistochemical analysis of paraffin-embedded human breast cancer tissue slide using 66269-1-Ig (L2HGDH Antibody) at dilution of 1:200 (under 40x lens). Heat mediated antigen retrieval with Tris-EDTA buffer (pH 9.0).