

Nur für Forschungszwecke

CAPG Monoklonaler Antikörper

Katalog-Nr.:66277-1-Ig

Vorgestelltes Produkt



Allgemeine Informationen

Katalog-Nr.: 66277-1-Ig	GenBank-Zugangsnummer: BC000728	Reinigungsmethode: Protein-G-Reinigung
Größe: 150ul , Konzentration: 1600 µg/ml von822 Nanodrop und 1000 µg/ml durch die Bradford-Methode mit BSA als Standard;	GeneID (NCBI): 3A5B2	CloneNo.: 3A5B2
Wirt: Maus	Vollständiger Name: capping protein (actin filament), gelsolin-like	Empfohlene Verdünnungen: WB 1:500-1:2000 IHC 1:50-1:500 IF 1:50-1:500
Isotyp: IgG1	Berechnete Masse: 39 kDa	
Immunogen Katalognummer: AG24676	Beobachtete Masse: 39-40 kDa	

Anwendungen

Geprüfte Anwendungen: IF, IHC, WB,ELISA	Positivkontrollen:
Getestete Reaktivität: Human	WB : Jurkat-Zellen, HeLa-Zellen, HL-60-Zellen
Hinweis-IHC: Antigenmaskierung mit TE-Puffer pH 9,0 empfohlen. (*) Wahlweise kann die Antigenmaskierung auch mit Citratpuffer pH 6,0 erfolgen.	IHC : humanes Lungenkarzinomgewebe,
	IF : HeLa-Zellen,

Hintergrundinformationen

CapG (gelsolin-like actin-capping protein) is a member of the gelsolin superfamily proteins, which regulates actin filament length by capping or severing filaments. Studies have shown a role for CapG in regulating cell motility. The expression of CapG is upregulated under hypoxia and in turn increases the motility of cells. Recently it has been reported that the overexpression of CapG is associated with the progression of lung adenocarcinoma as well as lymphatic invasion status of cholangiocarcinoma, which may be used for prognosis of these tumors. (21908955,22155129)

Lagerung

Lagerungsbedingungen:
Bei -20°C lagern. Nach dem Versand ein Jahr lang stabil
Lagerungspuffer:
PBS mit 0.02% Natriumazid und 50% Glycerin pH 7.3.
Aliquotieren ist nicht notwendig bei -20°C Lagerung

*** 20ul-Größen enthalten 0.1% BSA

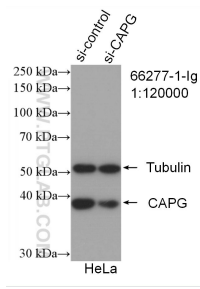
For technical support and original validation data for this product please contact:

T: 1 (888) 4PTGLAB (1-888-478-4522) (toll free
in USA), or 1(312) 455-8498 (outside USA)

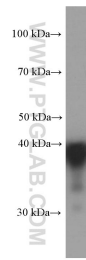
E: proteintech@ptglab.com
W: ptglab.com

This product is exclusively available under Proteintech Group brand and is not available to purchase from any other manufacturer.

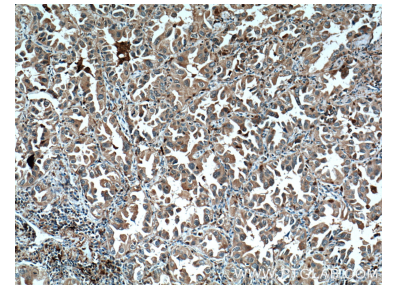
Ausgewählte Validierungsdaten



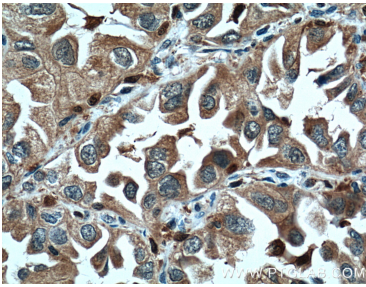
WB result of CAPG antibody (66277-1-Ig; 1:120000); incubated at room temperature for 1.5 hours) with sh-Control and sh-CAPG transfected HeLa cells.



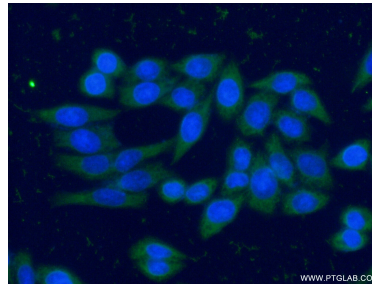
Jurkat cells were subjected to SDS PAGE followed by western blot with 66277-1-Ig (CAPG Antibody) at dilution of 1:1000 incubated at room temperature for 1.5 hours.



Immunohistochemical analysis of paraffin-embedded human lung cancer tissue slide using 66277-1-Ig (CAPG Antibody) at dilution of 1:200 (under 10x lens). Heat mediated antigen retrieval with Tris-EDTA buffer (pH 9.0).



Immunohistochemical analysis of paraffin-embedded human lung cancer tissue slide using 66277-1-Ig (CAPG Antibody) at dilution of 1:200 (under 40x lens). Heat mediated antigen retrieval with Tris-EDTA buffer (pH 9.0).



Immunofluorescent analysis of (-20°C Ethanol) fixed HeLa cells using 66277-1-Ig (CAPG antibody) at dilution of 1:100 and Alexa Fluor 488-conjugated AffiniPure Goat Anti-Mouse IgG(H+L).