

Nur für Forschungszwecke

# YY1 Monoklonaler Antikörper

Katalog-Nr.: 66281-1-Ig **28 Publikationen**



## Allgemeine Informationen

<b>Katalog-Nr.:</b> 66281-1-Ig	<b>GenBank-Zugangsnummer:</b> BC037308	<b>Reinigungsmethode:</b> Protein-A-Reinigung
<b>Größe:</b> 150ul, Konzentration: 1800 µg/ml von 7528 Nanodrop und 1000 µg/ml durch die Bradford-Methode mit BSA als Standard;	<b>GeneID (NCBI):</b> YY1 transcription factor	<b>CloneNo.:</b> 2E11C5
<b>Wirt:</b> Maus	<b>Vollständiger Name:</b> YY1 transcription factor	<b>Empfohlene Verdünnungen:</b> WB 1:5000-1:50000 IP 0.5-4.0 µg für IP und 1:500-1:2000 für WB
<b>Isotyp:</b> IgG2a	<b>Berechnete Masse:</b> 414 aa, 45 kDa	<b>IHC 1:50-1:500</b>
<b>Immunogen Katalognummer:</b> AG17732	<b>Beobachtete Masse:</b> 65-70 kDa	<b>IF 1:200-1:800</b>

## Anwendungen

<b>Geprüfte Anwendungen:</b> IF, IHC, IP, WB, ELISA	<b>Positivkontrollen:</b> <b>WB:</b> C6-Zellen, A431-Zellen, COS-7-Zellen, HEK-293-Zellen, HeLa-Zellen, HepG2-Zellen, Jurkat-Zellen, K-562-Zellen, MCF-7-Zellen, NIH/3T3-Zellen
<b>In Publikationen genannte Anwendungen:</b> ChIP, ColP, IF, IHC, WB	<b>IP:</b> NIH/3T3-Zellen,
<b>Getestete Reaktivität:</b> Affe, Human, Maus, Ratte	<b>IHC:</b> humanes Mammakarzinomgewebe,
<b>Zitierte Arten:</b> Hausschwein, Human, Maus, Ratte	<b>IF:</b> HepG2-Zellen,
<b>Hinweis-IHC: Antigenmaskierung mit TE-Puffer pH 9,0 empfohlen. (*) Wahlweise kann die Antigenmaskierung auch mit Citratpuffer pH 6,0 erfolgen.</b>	

## Hintergrundinformationen

YY1, also named as DELTA, INO80S and NF-E1, contains four C2H2-type zinc fingers and belongs to the YY transcription factor family. YY1 is a multifunctional transcription factor that exhibits positive and negative control on a large number of cellular and viral genes by binding to sites overlapping the transcription start site. YY1 may direct histone deacetylases and histone acetyltransferases to a promoter in order to activate or repress the promoter, thus implicating histone modification in the YY1. The open reading frame of the human YY1 cDNA encodes a protein of 414 amino acids with a predicted molecular weight of 44 kDa. However, YY1 migrates on SDS gels as a 65-68 kDa protein, probably due to the structure of the protein. It is a ubiquitously expressed transcription factor with fundamental roles in embryogenesis, differentiation, replication and proliferation.

## Bemerkenswerte Veröffentlichungen

Verfasser	Pubmed ID	Journal	Anwendung
Bin Li	36123703	Cancer Cell Int	IHC, WB
Changjiang Liu	34544022	Ecotoxicol Environ Saf	ColP, WB
Xianping Huang	32881243	Environ Toxicol	

## Lagerung

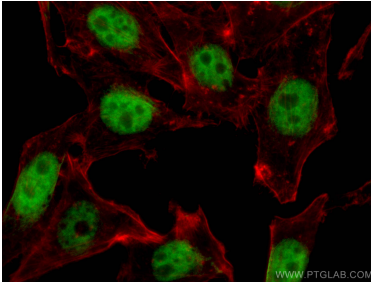
**Lagerungsbedingungen:**  
Bei -20°C lagern. Nach dem Versand ein Jahr lang stabil  
**Lagerungspuffer:**  
PBS mit 0.02% Natriumazid und 50% Glycerin pH 7.3.  
Aliquotieren ist nicht notwendig bei -20°C Lagerung

\*\*\* 20ul-Größen enthalten 0.1% BSA

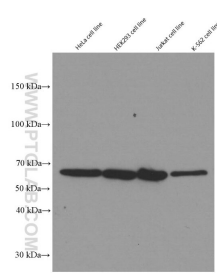
For technical support and original validation data for this product please contact:  
T: 1 (888) 4PTGLAB (1-888-478-4522) (toll free in USA), or 1(312) 455-8498 (outside USA)  
E: proteintech@ptglab.com  
W: ptglab.com

This product is exclusively available under Proteintech Group brand and is not available to purchase from any other manufacturer.

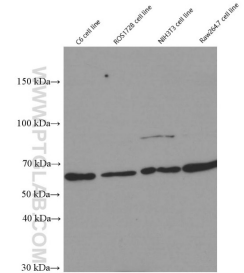
## Ausgewählte Validierungsdaten



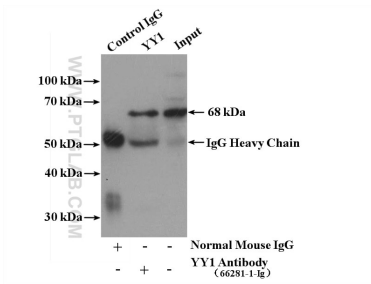
Immunofluorescent analysis of (4% PFA) fixed HepG2 cells using 66281-1-Ig (YY1 antibody), at dilution of 1:400 and CoraLite®488-Conjugated AffiniPure Goat Anti-Mouse IgG(H+L).



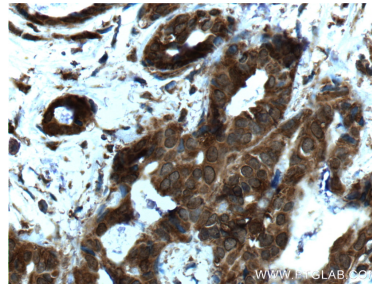
Western blot of YY1 in various human cell lines with 66281-1-Ig at dilution of 1:50000 incubated at room temperature for 1.5 hours.



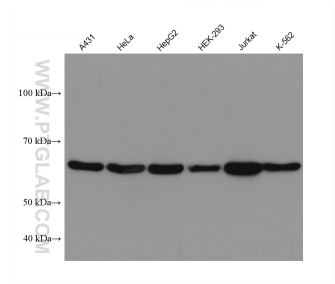
Western blot of YY1 in rat (C6 and ROS1728) and mouse (NIH3T3 and Raw264.7) cell lines with 66281-1-Ig at dilution of 1:50000 incubated at room temperature for 1.5 hours.



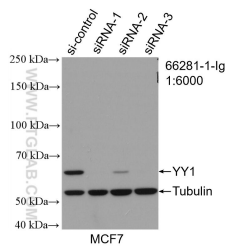
IP Result of anti-YY1 (IP:66281-1-Ig, 5ug; Detection:66281-1-Ig 1:1000) with NIH/3T3 cells lysate 4000ug.



Immunohistochemical analysis of paraffin-embedded human breast cancer tissue slide using 66281-1-Ig (YY1 Antibody) at dilution of 1:200 (under 40x lens). Heat mediated antigen retrieval with Tris-EDTA buffer (pH 9.0).



Various lysates were subjected to SDS PAGE followed by western blot with 66281-1-Ig (YY1 antibody) at dilution of 1:20000 incubated at room temperature for 1.5 hours.



WB result of YY1 antibody (66281-1-Ig; 1:6000; incubated at room temperature for 1.5 hours) with sh-Control and sh-YY1 transfected MCF-7 cells.