

Nur für Forschungszwecke

IGF1R Beta Chain Monoklonaler Antikörper



Katalog-Nr.: 66283-1-Ig **6 Publikationen**

Allgemeine Informationen

Katalog-Nr.: 66283-1-Ig	GenBank-Zugangsnummer: NM_000875	Reinigungsmethode: Protein-G-Reinigung
Größe: 150ul, Konzentration: 1500 µg/ml von 3480 Nanodrop und 1000 µg/ml durch die Bradford-Methode mit BSA als Standard;	GeneID (NCBI): IGF1 receptor	CloneNo.: 3C6A11
Wirt: Maus	Berechnete Masse: 155 kDa	Empfohlene Verdünnungen: WB 1:1000-1:8000 IHC 1:50-1:500
Isotyp: IgG1	Beobachtete Masse: 130-140 kDa	

Anwendungen

Geprüfte Anwendungen: IHC, WB, ELISA	Positivkontrollen: WB : MCF-7-Zellen, A549-Zellen, C6-Zellen, HEK-293-Zellen, HeLa-Zellen, HepG2-Zellen, HUVEC-Zellen, ROS1728-Zellen
In Publikationen genannte Anwendungen: IHC, WB	IHC : humanes Mammakarzinomgewebe, humanes Endometriumkarzinomgewebe, humanes Lungenkarzinomgewebe
Getestete Reaktivität: Human, Ratte	
Zitierte Arten: Human, Maus, Ratte	

Hinweis-IHC: Antigendemaskierung mit TE-Puffer pH 9,0 empfohlen. (*) Wahlweise kann die Antigendemaskierung auch mit Citratpuffer pH 6,0 erfolgen.

Hintergrundinformationen

IGF1R, also named as CD221, belongs to the protein kinase superfamily, Tyr protein kinase family and INS receptor subfamily. IGF1R binds INS-like growth factor 1 (IGF1) with a high affinity and IGF2 with a lower affinity. It has a tyrosine-protein kinase activity, which is necessary for the activation of the IGF1-stimulated downstream signaling cascade. When present in a hybrid receptor with INSR, IGF1R binds IGF1. The hybrid receptors composed of IGF1R and INSR isoform Long are activated with a high affinity by IGF1, with low affinity by IGF2 and not significantly activated by INS, and that hybrid receptors composed of IGF1R and INSR isoform Short are activated by IGF1, IGF2 and INS. In contrast, the hybrid receptors composed of IGF1R and INSR isoform Long and hybrid receptors composed of IGF1R and INSR isoform Short have similar binding characteristics, both bind IGF1 and have a low affinity for INS. Defects in IGF1R may be a cause in some cases of resistance to INS-like growth factor 1 (IGF1 resistance). This antibody raised against a synthesized polypeptide (CGVLVLRASFDERQPYAH) corresponding to 1332-1348aa of human IGF1R protein recognizes beta chain of IGF1R.

Bemerkenswerte Veröffentlichungen

Verfasser	Pubmed ID	Journal	Anwendung
YuanPing Hai	36128805	Thyroid	IHC
Takashi Hara	36130217	Biosci Biotechnol Biochem	WB
Shuai Lian	30423388	Behav Brain Res	WB

Lagerung

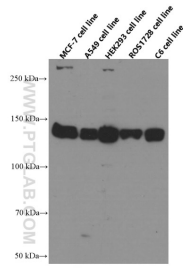
Lagerungsbedingungen:
Bei -20°C lagern. Nach dem Versand ein Jahr lang stabil
Lagerungspuffer:
PBS mit 0.02% Natriumazid und 50% Glycerin pH 7.3.
Aliquotieren ist nicht notwendig bei -20°C Lagerung

*** 20ul-Größen enthalten 0.1% BSA

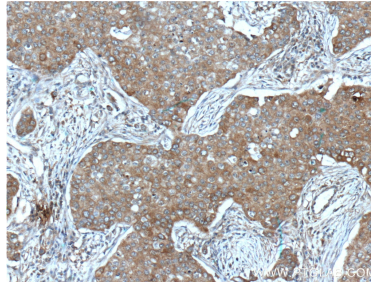
For technical support and original validation data for this product please contact:
T: 1 (888) 4PTGLAB (1-888-478-4522) (toll free in USA), or 1(312) 455-8498 (outside USA)
E: proteintech@ptglab.com
W: ptglab.com

This product is exclusively available under Proteintech Group brand and is not available to purchase from any other manufacturer.

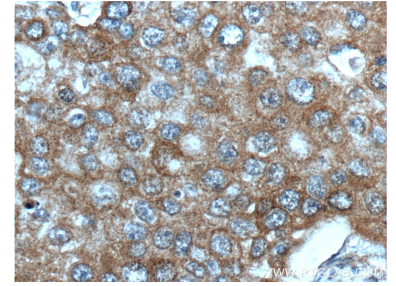
Ausgewählte Validierungsdaten



Various lysates were subjected to SDS PAGE followed by western blot with 66283-1-Ig (IGF1R beta chain antibody at dilution of 1:4000 incubated at room temperature for 1.5 hours.



Immunohistochemical analysis of paraffin-embedded human breast cancer tissue slide using 66283-1-Ig (IGF1R beta chain antibody at dilution of 1:200 (under 10x lens). Heat mediated antigen retrieval with Tris-EDTA buffer (pH 9.0).



Immunohistochemical analysis of paraffin-embedded human breast cancer tissue slide using 66283-1-Ig (IGF1R beta chain antibody at dilution of 1:200 (under 40x lens). Heat mediated antigen retrieval with Tris-EDTA buffer (pH 9.0).