

Nur für Forschungszwecke

# MYL3 Monoklonaler Antikörper

Katalog-Nr.:66286-1-Ig



## Allgemeine Informationen

<b>Katalog-Nr.:</b> 66286-1-Ig	<b>GenBank-Zugangsnummer:</b> BC009790	<b>Reinigungsmethode:</b> Protein-G-Reinigung
<b>Größe:</b> 150ul, Konzentration: 1100 µg/ml von4634 Nanodrop und 1000 µg/ml durch die Bradford-Methode mit BSA als Standard;	<b>GeneID (NCBI):</b> myosin, light chain 3, alkali; ventricular, skeletal, slow	<b>CloneNo.:</b> 2E4B2
<b>Wirt:</b> Maus	<b>Berechnete Masse:</b> 22 kDa	<b>Empfohlene Verdünnungen:</b> WB 1:5000-1:50000 IHC 1:20-1:200
<b>Isotyp:</b> IgG1	<b>Beobachtete Masse:</b> 22-25 kDa	
<b>Immunogen Katalognummer:</b> AG24535		

## Anwendungen

<b>Geprüfte Anwendungen:</b> IHC, WB, ELISA	<b>Positivkontrollen:</b>
<b>Getestete Reaktivität:</b> Hausschwein, Human, Maus, Ratte	<b>WB :</b> humanes Skelettmuskelgewebe, Hausschwein- Herzgewebe, humanes Herzgewebe, Mausherzgewebe, Rattenherzgewebe
<b>Hinweis-IHC: Antigendemaskierung mit TE- Puffer pH 9,0 empfohlen. (*) Wahlweise kann die Antigendemaskierung auch mit Citratpuffer pH 6,0 erfolgen.</b>	<b>IHC :</b> humanes Herzgewebe, humanes Skelettmuskelgewebe

## Hintergrundinformationen

MYL3, also named as MLC1v, is an essential light chain of myosin that is associated with muscle contraction. It is expressed in ventricular and slow skeletal muscle. MYL3 may serve as a target for caspase-3 in dying cardiomyocytes. Mutations of MYL3 gene cause hypertrophic cardiomyopathy. MYL3 has been identified as potential serum biomarker for drug induced myotoxicity. Great increase in MYL3 serum concentration has been observed in rats with cardiac and skeletal muscle injury. (PMID:21685905)

## Lagerung

**Lagerungsbedingungen:**  
Bei -20°C lagern. Nach dem Versand ein Jahr lang stabil  
**Lagerungspuffer:**  
PBS mit 0.02% Natriumazid und 50% Glycerin pH 7.3.  
**Aliquotieren ist nicht notwendig bei -20°C Lagerung**

\*\*\* 20ul-Größen enthalten 0.1% BSA

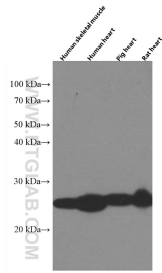
For technical support and original validation data for this product please contact:

T: 1 (888) 4PTGLAB (1-888-478-4522) (toll free  
in USA), or 1(312) 455-8498 (outside USA)

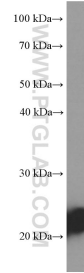
E: proteintech@ptglab.com  
W: ptglab.com

This product is exclusively available under Proteintech Group brand and is not available to purchase from any other manufacturer.

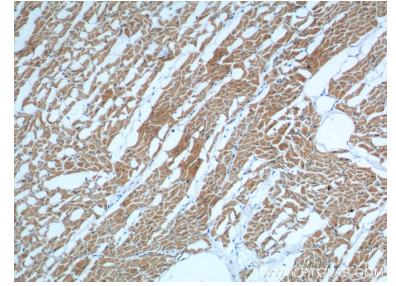
## Ausgewählte Validierungsdaten



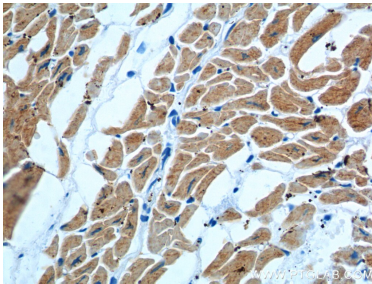
Various tissue lysates were subjected to SDS PAGE followed by western blot with 66286-1-Ig (MYL3 antibody) at dilution of 1:50000 incubated at room temperature for 1.5 hours.



human skeletal muscle tissue were subjected to SDS PAGE followed by western blot with 66286-1-Ig (MYL3 Antibody) at dilution of 1:20000 incubated at room temperature for 1.5 hours.



Immunohistochemical analysis of paraffin-embedded human heart tissue slide using 66286-1-Ig (MYL3 Antibody) at dilution of 1:600 (under 10x lens).



Immunohistochemical analysis of paraffin-embedded human heart tissue slide using 66286-1-Ig (MYL3 Antibody) at dilution of 1:600 (under 40x lens).