

Allgemeine Informationen

Katalog-Nr.: 66287-1-Ig	GenBank-Zugangsnummer: BC067223	Reinigungsmethode: Protein-A-Reinigung
Größe: 150ul , Konzentration: 3200 µg/ml von3939 Nanodrop und 1500 µg/ml durch die Bradford-Methode mit BSA als Standard;	GeneID (NCBI): 3939	CloneNo.: 2E2G6
Wirt: Maus	Vollständiger Name: lactate dehydrogenase A	Empfohlene Verdünnungen: WB 1:500-1:3000 IHC 1:100-1:400 IF 1:50-1:500
Isotyp: IgG2b	Berechnete Masse: 332 aa, 37 kDa	
Immunogen Katalognummer: AG21417	Beobachtete Masse: 32-37 kDa	

Anwendungen

Geprüfte Anwendungen: IF, IHC, WB, ELISA	Positivkontrollen: WB : Hausschwein-Lebergewebe, A431-Zellen, Hausschwein-Skelettmuskelgewebe IHC : humanes Leberkarzinomgewebe, IF : HepG2-Zellen,
In Publikationen genannte Anwendungen: IF, IHC, WB	
Getestete Reaktivität: Hausschwein, Human, Maus	
Zitierte Arten: Human, Maus, Ratte	
Hinweis-IHC: Antigendemaskierung mit TE-Puffer pH 9,0 empfohlen. (*) Wahlweise kann die Antigendemaskierung auch mit Citratpuffer pH 6,0 erfolgen.	

Hintergrundinformationen

LDHA, also named as LDH-M and NY-REN-59, is an enzyme which catalyzes the inter-conversion of pyruvate and L-lactate with concomitant inter-conversion of NADH and NAD⁺. LDHA is found in most somatic tissues, though predominantly in muscle tissue and tumours, and belongs to the lactate dehydrogenase family. It has long been known that many human cancers have higher LDHA levels compared to normal tissues. It has also been shown that LDHA plays an important role in the development, invasion and metastasis of malignancies. Mutations in LDHA have been linked to exertional myoglobinuria. LDHA has some isoforms with MW 26-40 kDa.

Bemerkenswerte Veröffentlichungen

Verfasser	Pubmed ID	Journal	Anwendung
Shengqi Wang	34568078	Front Oncol	WB,IF
Shihua Bao	36355621	Hum Reprod	IHC
Ruiguan Wang	35669414	Front Oncol	WB

Lagerung

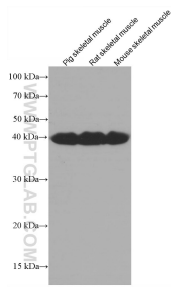
Lagerungsbedingungen:
Bei -20°C lagern. Nach dem Versand ein Jahr lang stabil
Lagerungspuffer:
PBS mit 0.02% Natriumazid und 50% Glycerin pH 7.3.
Aliquotieren ist nicht notwendig bei -20°C Lagerung

***** 20ul-Größen enthalten 0.1% BSA**

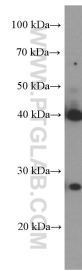
For technical support and original validation data for this product please contact:
T: 1 (888) 4PTGLAB (1-888-478-4522) (toll free in USA), or 1(312) 455-8498 (outside USA)
E: proteintech@ptglab.com
W: ptglab.com

This product is exclusively available under Proteintech Group brand and is not available to purchase from any other manufacturer.

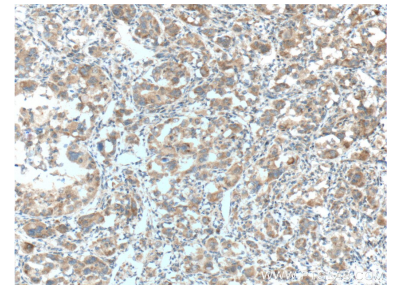
Ausgewählte Validierungsdaten



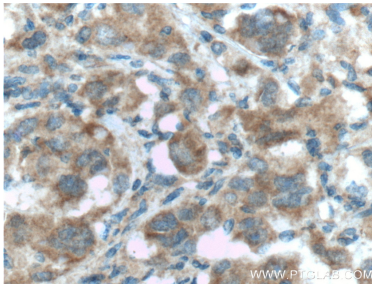
Various lysates were subjected to SDS PAGE followed by western blot with 66287-1-Ig (LDHA antibody) at dilution of 1:4000 incubated at room temperature for 1.5 hours.



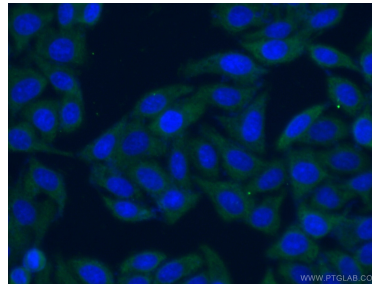
pig liver tissue were subjected to SDS PAGE followed by western blot with 66287-1-Ig (LDHA Antibody) at dilution of 1:1500 incubated at room temperature for 1.5 hours.



Immunohistochemical analysis of paraffin-embedded human liver cancer tissue slide using 66287-1-Ig (LDHA Antibody) at dilution of 1:200 (under 10x lens). Heat mediated antigen retrieval with Tris-EDTA buffer (pH 9.0).



Immunohistochemical analysis of paraffin-embedded human liver cancer tissue slide using 66287-1-Ig (LDHA Antibody) at dilution of 1:200 (under 40x lens). Heat mediated antigen retrieval with Tris-EDTA buffer (pH 9.0).



Immunofluorescent analysis of (-20°C Ethanol) fixed HepG2 cells using 66287-1-Ig(LDHA antibody) at dilution of 1:50 and Alexa Fluor 488-conjugated AffiniPure Goat Anti-Mouse IgG(H+L).