

Nur für Forschungszwecke

# TRAF3 Monoklonaler Antikörper

Katalog-Nr.:66310-1-Ig

Vorgestelltes Produkt

10 Publikationen



## Allgemeine Informationen

<b>Katalog-Nr.:</b> 66310-1-Ig	<b>GenBank-Zugangsnummer:</b> BC075087	<b>Reinigungsmethode:</b> Protein-A-Reinigung
<b>Größe:</b> 150ul, Konzentration: 2800 µg/ml von 7187 Nanodrop und 2000 µg/ml durch die Bradford-Methode mit BSA als Standard;	<b>GeneID (NCBI):</b> Vollständiger Name: TNF receptor-associated factor 3	<b>CloneNo.:</b> 1E3F4
<b>Wirt:</b> Maus	<b>Berechnete Masse:</b> 568 aa, 64 kDa	<b>Empfohlene Verdünnungen:</b> WB 1:500-1:2000 IHC 1:200-1:800 IF 1:200-1:800
<b>Isotyp:</b> IgG2a	<b>Beobachtete Masse:</b> 55 kDa	
<b>Immunogen Katalognummer:</b> AG12185		

## Anwendungen

### Geprüfte Anwendungen:

IF, IHC, WB, ELISA

### In Publikationen genannte Anwendungen:

CoIP, IF, IHC, IP, WB

### Getestete Reaktivität:

Human, Maus

### Zitierte Arten:

Human, Maus

**Hinweis-IHC: Antigenmaskierung mit TE-Puffer pH 9,0 empfohlen. (\*) Wahlweise kann die Antigenmaskierung auch mit Citratpuffer pH 6,0 erfolgen.**

### Positivkontrollen:

**WB:** A549-Zellen, HEK-293-Zellen, Jurkat-Zellen, mit LPS behandelte U-937-Zellen, NCI-H1299-Zellen, Raji-Zellen

**IHC:** humanes Lymphomgewebe,

**IF:** HeLa-Zellen,

## Hintergrundinformationen

TNF receptor-associated factor 3 (TRAF3) has many alternative names including CAP-1, CD40 receptor-associated factor 1(CRAF1), CD40-binding protein(CD40BP) and LMP1-associated protein 1 (LAP1). TRAF3 regulates pathways leading to the activation of NF-kappa-B and MAP kinases, and plays a central role in the regulation of innate immune response. It modulates signaling pathways leading to the production of cytokines and interferon. As an essential constituent of several E3 ubiquitin-protein ligase complexes, TRAF3 promote 'Lys-63'-linked ubiquitination of target proteins. Moreover, TRAF3 undergoes both 'Lys-48'-linked and 'Lys-63'-linked ubiquitination in response to various stimuli and is deubiquitinated by OTUB1, OTUB2 and OTUD5.

## Bemerkenswerte Veröffentlichungen

Verfasser	Pubmed ID	Journal	Anwendung
Xinyue Du	33061854	Cancer Cell Int	WB
Jianqiao Hong	34000381	Free Radic Biol Med	IHC
Sujie Dong	35499322	J Virol	WB

## Lagerung

### Lagerungsbedingungen:

Bei -20°C lagern. Nach dem Versand ein Jahr lang stabil

### Lagerungspuffer:

PBS mit 0.02% Natriumazid und 50% Glycerin pH 7.3.

Aliquotieren ist nicht notwendig bei -20°C Lagerung

\*\*\* 20ul-Größen enthalten 0.1% BSA

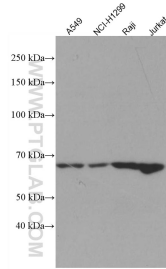
For technical support and original validation data for this product please contact:

T: 1 (888) 4PTGLAB (1-888-478-4522) (toll free in USA), or 1(312) 455-8498 (outside USA)

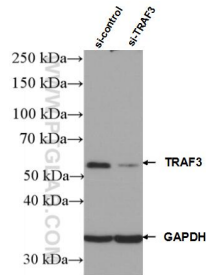
E: proteintech@ptglab.com  
W: ptglab.com

This product is exclusively available under Proteintech Group brand and is not available to purchase from any other manufacturer.

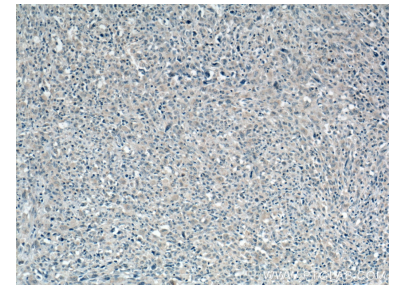
## Ausgewählte Validierungsdaten



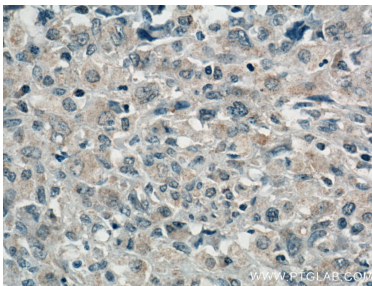
Various lysates were subjected to SDS PAGE followed by western blot with 66310-1-Ig (TRAF3 antibody) at dilution of 1:2000 incubated at room temperature for 1.5 hours.



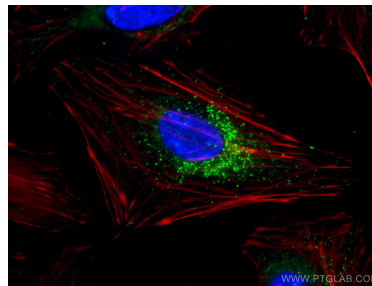
WB result of TRAF3 antibody (66310-1-Ig; 1:1000; incubated at room temperature for 1.5 hours) with sh-Control and sh-TRAF3 transfected HEK-293 cells.



Immunohistochemical analysis of paraffin-embedded human lymphoma tissue slide using 66310-1-Ig (TRAF3 antibody) at dilution of 1:400 (under 10x lens. Heat mediated antigen retrieval with Tris-EDTA buffer (pH 9.0).



Immunohistochemical analysis of paraffin-embedded human lymphoma tissue slide using 66310-1-Ig (TRAF3 antibody) at dilution of 1:400 (under 40x lens. Heat mediated antigen retrieval with Tris-EDTA buffer (pH 9.0).



Immunofluorescent analysis of (-20°C Ethanol) fixed HeLa cells using TRAF3 antibody (66310-1-Ig, Clone: 1E3F4 ) at dilution of 1:400 and CoraLite®488-Conjugated AffiniPure Goat Anti-Mouse IgG(H+L).