

Nur für Forschungszwecke

Integrin Beta 1 Monoklonaler Antikörper



Katalog-Nr.: 66315-1-Ig **1 Publikationen**

Allgemeine Informationen

Katalog-Nr.: 66315-1-Ig	GenBank-Zugangsnummer: BC020057	Reinigungsmethode: Protein-G-Reinigung
Größe: 150ul, Konzentration: 2300 µg/ml von 3688 Nanodrop und 1000 µg/ml durch die Bradford-Methode mit BSA als Standard;	GeneID (NCBI): 150000	CloneNo.: 1A7C9
Wirt: Maus	Vollständiger Name: integrin, beta 1 (fibronectin receptor, beta polypeptide, antigen CD29 includes MDF2, MSK12)	Empfohlene Verdünnungen: WB 1:2000-1:16000
Isotyp: IgG1	Berechnete Masse: 88 kDa	
Immunogen Katalognummer: AG24476	Beobachtete Masse: 130 kDa	

Anwendungen

Geprüfte Anwendungen: FC, WB, ELISA	Positivkontrollen: WB: HT-1080.Zellen, HUVEC-Zellen
In Publikationen genannte Anwendungen: WB	
Getestete Reaktivität: Human	
Zitierte Arten: Human	

Hintergrundinformationen

Integrin beta-1 (ITGB1), also named as CD29, is a 130 kDa single chain type I glycoprotein that is expressed in a heterodimeric complex with one of six distinct α subunits, comprising the very late activation antigen (VLA) subfamily of adhesion receptors. It is one of the essential surface molecules expressed on human MSC from bone marrow and other sources. The β 1 subunit is also broadly expressed on lymphocytes and monocytes, weakly expressed on granulocytes, and not expressed on erythrocytes. These receptors are involved in a variety of cell-cell and cell-matrix interactions.

Bemerkenswerte Veröffentlichungen

Verfasser	Pubmed ID	Journal	Anwendung
Eun-Ah Cho	33275877	Structure	WB

Lagerung

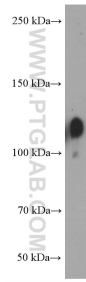
Lagerungsbedingungen:
Bei -20°C lagern. Nach dem Versand ein Jahr lang stabil
Lagerungspuffer:
PBS mit 0.02% Natriumazid und 50% Glycerin pH 7.3.
Aliquotieren ist nicht notwendig bei -20°C Lagerung

*** 20ul-Größen enthalten 0.1% BSA

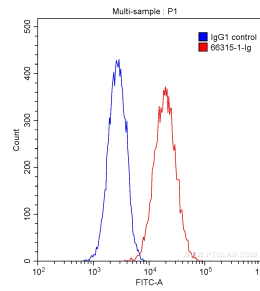
For technical support and original validation data for this product please contact:
T: 1 (888) 4PTGLAB (1-888-478-4522) (toll free in USA), or 1(312) 455-8498 (outside USA)
E: proteintech@ptglab.com
W: ptglab.com

This product is exclusively available under Proteintech Group brand and is not available to purchase from any other manufacturer.

Ausgewählte Validierungsdaten



HT-1080 cells were subjected to SDS PAGE followed by western blot with 66315-1-Ig (Integrin beta-1 Antibody) at dilution of 1:8000 incubated at room temperature for 1.5 hours.



1×10^6 HUVEC cells were stained with 0.20 μ g Anti-Human Integrin beta-1 (66315-1-Ig, Clone:1A7C9) (red) or 0.20 μ g Mouse IgG1 Isotype Control (66360-1-Ig, Clone:T1F8D3F10) (blue) and CoraLite®488-Conjugated AffiniPure Goat Anti-Mouse IgG(H+L) with dilution of 1:1000. Cells were fixed with 90% MeOH.