

Nur für Forschungszwecke

# EPCAM/CD326 Monoklonaler Antikörper



Katalog-Nr.: 66316-1-Ig

Vorgestelltes Produkt

6 Publikationen

## Allgemeine Informationen

Katalog-Nr.:  
66316-1-Ig

Größe:  
150ul, Konzentration: 1400 µg/ml von 4072  
Nanodrop und 1000 µg/ml durch die  
Bradford-Methode mit BSA als  
Standard;

Wirt:  
Maus

Isotyp:  
IgG2a

Immunogen Katalognummer:  
AG15393

GenBank-Zugangsnummer:  
BC014785

GeneID (NCBI):

Vollständiger Name:  
epithelial cell adhesion molecule

Berechnete Masse:  
314 aa, 35 kDa

Beobachtete Masse:  
35-40 kDa

Reinigungsmethode:  
Protein-A-Reinigung

CloneNo.:  
2A2D5

Empfohlene Verdünnungen:  
WB 1:2000-1:10000  
IHC 1:50-1:500  
IF 1:200-1:800

## Anwendungen

Geprüfte Anwendungen:

IF, IHC, WB, ELISA

In Publikationen genannte Anwendungen:

FC, WB

Getestete Reaktivität:

Human

Zitierte Arten:

Human

**Hinweis-IHC: Antigenmaskierung mit TE-Puffer pH 9,0 empfohlen. (\*) Wahlweise kann die Antigenmaskierung auch mit Citratpuffer pH 6,0 erfolgen.**

Positivkontrollen:

WB: HaCaT-Zellen, A431-Zellen, MCF-7-Zellen, T-47D-Zellen

IHC: humanes Mammakarzinomgewebe,

IF: MCF-7-Zellen, humanes Kolonkarzinomgewebe, humanes Magenkrebsgewebe

## Hintergrundinformationen

Epithelial cell adhesion molecule (EpCAM, CD326) is a type I transmembrane glycoprotein that functions as a homophilic, epithelial-specific intercellular cell-adhesion molecule. In addition to cell adhesion, EpCAM is also involved in cellular signaling, cell migration, proliferation, and differentiation. EpCAM is highly expressed on most carcinomas and therefore of potential use as a diagnostic and prognostic marker for a variety of carcinomas, and has become a therapeutic target. EpCAM may occur in distinct forms due to glycosylation. (PMID: 20837599; 19249674; 21576002; 22647938; 12691820)

## Bemerkenswerte Veröffentlichungen

Verfasser	Pubmed ID	Journal	Anwendung
Chunyan Yang	32123160	Cell Death Dis	WB
Lei Wang	34218177	Biosens Bioelectron	FC
Yaxue Dai	35868149	Talanta	WB

## Lagerung

Lagerungsbedingungen:

Bei -20°C lagern. Nach dem Versand ein Jahr lang stabil

Lagerungspuffer:

PBS mit 0.02% Natriumazid und 50% Glycerin pH 7.3.

Aliquotieren ist nicht notwendig bei -20°C Lagerung

\*\*\* 20ul-Größen enthalten 0.1% BSA

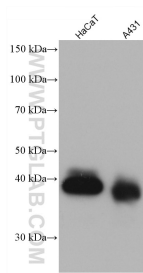
For technical support and original validation data for this product please contact:

T: 1 (888) 4PTGLAB (1-888-478-4522) (toll free in USA), or 1(312) 455-8498 (outside USA)

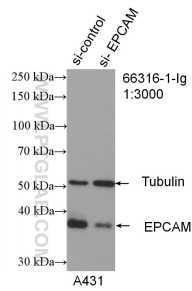
E: proteintech@ptglab.com  
W: ptglab.com

This product is exclusively available under Proteintech Group brand and is not available to purchase from any other manufacturer.

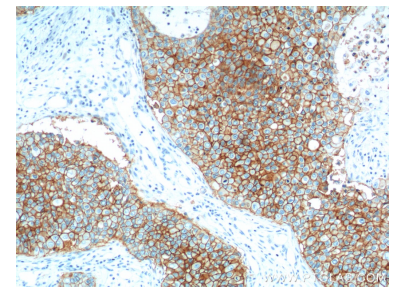
## Ausgewählte Validierungsdaten



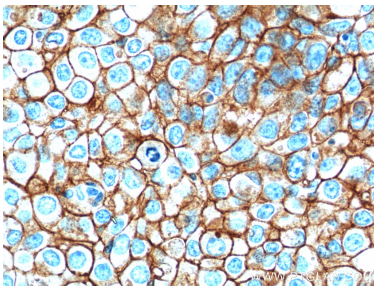
Various lysates were subjected to SDS PAGE followed by western blot with 66316-1-Ig (EPCAM antibody) at dilution of 1:5000 incubated at room temperature for 1.5 hours.



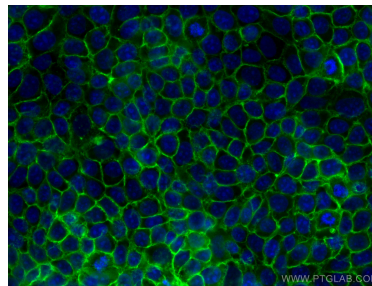
WB result of EPCAM antibody (66316-1-Ig; 1:3000; incubated at room temperature for 1.5 hours) with sh-Control and sh-EPCAM transfected A431 cells.



Immunohistochemical analysis of paraffin-embedded human breast cancer tissue slide using 66316-1-Ig (EPCAM Antibody) at dilution of 1:500 (under 10x lens). Heat mediated antigen retrieval with Tris-EDTA buffer (pH 9.0).



Immunohistochemical analysis of paraffin-embedded human breast cancer tissue slide using 66316-1-Ig (EPCAM Antibody) at dilution of 1:500 (under 40x lens). Heat mediated antigen retrieval with Tris-EDTA buffer (pH 9.0).



Immunofluorescent analysis of (-20°C Methanol) fixed MCF-7 cells using EPCAM antibody (66316-1-Ig, Clone: 2A2D5 ) at dilution of 1:400 and CoraLite® 488-Conjugated AffiniPure Goat Anti-Mouse IgG(H+L).