

Nur für Forschungszwecke

Gamma Tubulin Monoklonaler Antikörper



Katalog-Nr.: 66320-1-Ig **16 Publikationen**

Allgemeine Informationen

Katalog-Nr.: 66320-1-Ig	GenBank-Zugangsnummer: BC000619	Reinigungsmethode: Protein-A-Reinigung
Größe: 150ul, Konzentration: 1000 µg/ml von 7283 Nanodrop und 549 µg/ml durch die Bradford-Methode mit BSA als Standard;	GeneID (NCBI): 7283	CloneNo.: 3F9H8
Wirt: Maus	Vollständiger Name: tubulin, gamma 1	Empfohlene Verdünnungen: WB 1:2000-1:12000 IHC 1:200-1:1000 IF 1:50-1:500
Isotyp: IgG2a	Berechnete Masse: 51 kDa	
Immunogen Katalognummer: AG23913	Beobachtete Masse: 48-55 kDa	

Anwendungen

Geprüfte Anwendungen: IF, IHC, WB, ELISA	Positivkontrollen: WB: NCCIT-Zellen, EC109-Zellen, HepG2-Zellen, HSC-T6-Zellen, K-562-Zellen, NIH3T3-Zellen IHC: humanes Mammakarzinomgewebe, humanes Prostatakarzinomgewebe IF: MDCK-Zellen, A549-Zellen, HeLa-Zellen
In Publikationen genannte Anwendungen: IF, WB	
Getestete Reaktivität: Human, Hund, Maus, Ratte	
Zitierte Arten: Human, Maus	
Hinweis-IHC: Antigenmaskierung mit TE-Puffer pH 9,0 empfohlen. (*) Wahlweise kann die Antigenmaskierung auch mit Citratpuffer pH 6,0 erfolgen.	

Hintergrundinformationen

Gamma tubulin is a member of tubulin superfamily and is a key component required for microtubule nucleation and stabilization. It is concentrated at the pericentriolar material of centrosomes in interphase cells, predominantly on spindle poles in mitotic cells, while found in midbodies during cytokinesis. Overexpression of gamma tubulin has been found in various cancers including breast cancer and gliomas. This antibody can well label the centrosome structure.

Bemerkenswerte Veröffentlichungen

Verfasser	Pubmed ID	Journal	Anwendung
Yanli Liu	36238304	Front Immunol	IF
Emma Polonio-Alcalá	34771484	Cancers (Basel)	WB
Michaela Bosakova	33200460	EMBO Mol Med	IF

Lagerung

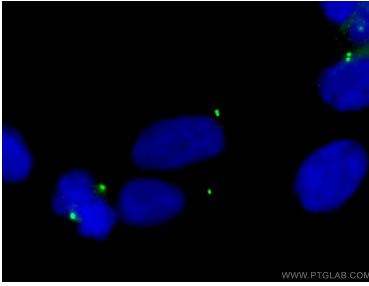
Lagerungsbedingungen:
Bei -20°C lagern. Nach dem Versand ein Jahr lang stabil
Lagerungspuffer:
PBS mit 0.02% Natriumazid und 50% Glycerin pH 7.3.
Aliquotieren ist nicht notwendig bei -20°C Lagerung

***** 20ul-Größen enthalten 0.1% BSA**

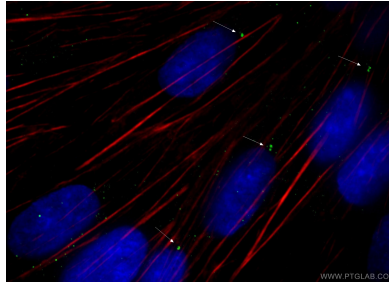
For technical support and original validation data for this product please contact:
T: 1 (888) 4PTGLAB (1-888-478-4522) (toll free in USA), or 1(312) 455-8498 (outside USA)
E: proteintech@ptglab.com
W: ptglab.com

This product is exclusively available under Proteintech Group brand and is not available to purchase from any other manufacturer.

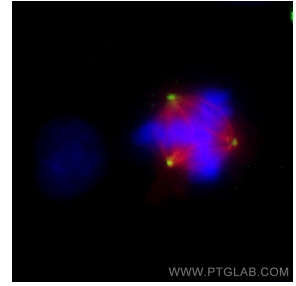
Ausgewählte Validierungsdaten



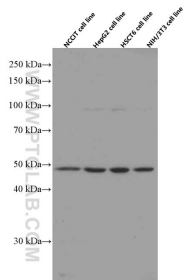
Immunofluorescent analysis of (-20°C Ethanol) fixed MDCK cells using 66320-1-Ig (gamma tubulin antibody) at dilution of 1:200 and CoraLite488-Conjugated AffiniPure Goat Anti-Mouse IgG(H+L).



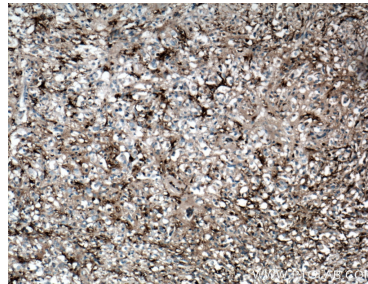
Immunofluorescent analysis of (-20°C Ethanol) fixed MDCK cells using 66320-1-Ig (gamma tubulin antibody) at dilution of 1:200 and CoraLite488-Conjugated AffiniPure Goat Anti-Mouse IgG(H+L).



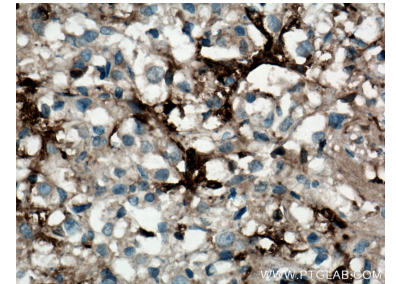
Immunofluorescent analysis of (-20°C Methanol) fixed A549 cells using Gamma Tubulin antibody (66320-1-Ig, Clone: 3F9H8) at dilution of 1:1000 and CoraLite®488-Conjugated AffiniPure Goat Anti-Mouse IgG(H+L), Alpha Tubulin antibody (11224-1-AP, red).



Various lysates were subjected to SDS PAGE followed by western blot with 66320-1-Ig (gamma tubulin antibody) at dilution of 1:6000 incubated at room temperature for 1.5 hours.



Immunohistochemical analysis of paraffin-embedded human breast cancer tissue slide using 66320-1-Ig (gamma tubulin antibody) at dilution of 1:500 (under 10x lens. Heat mediated antigen retrieval with Tris-EDTA buffer (pH 9.0).



Immunohistochemical analysis of paraffin-embedded human breast cancer tissue slide using 66320-1-Ig (gamma tubulin antibody) at dilution of 1:500 (under 40x lens. Heat mediated antigen retrieval with Tris-EDTA buffer (pH 9.0).