

## Allgemeine Informationen

<b>Katalog-Nr.:</b> 66321-1-Ig	<b>GenBank-Zugangsnummer:</b> BC000521	<b>Reinigungsmethode:</b> Protein-A-Reinigung
<b>Größe:</b> 150ul , Konzentration: 2100 µg/ml von6624 Nanodrop und 1000 µg/ml durch die Bradford-Methode mit BSA als Standard;	<b>GeneID (NCBI):</b> 1B5G3	<b>CloneNo.:</b> 1B5G3
<b>Wirt:</b> Maus	<b>Vollständiger Name:</b> fascin homolog 1, actin-bundling protein (Strongylocentrotus purpuratus)	<b>Empfohlene Verdünnungen:</b> WB 1:1000-1:4000 IHC 1:20-1:2000 IF 1:50-1:500
<b>Isotyp:</b> IgG2a	<b>Berechnete Masse:</b> 55 kDa	
<b>Immunogen Katalognummer:</b> AG6074	<b>Beobachtete Masse:</b> 55 kDa	

## Anwendungen

<b>Geprüfte Anwendungen:</b> FC, IF, IHC, WB, ELISA	<b>Positivkontrollen:</b> WB : SH-SY5Y-Zellen, HeLa-Zellen, K-562-Zellen
<b>In Publikationen genannte Anwendungen:</b> IF, IHC, WB	<b>IHC :</b> humanes Tonsillitisgewebe, humanes Hautkrebsgewebe, humanes Pankreaskarzinomgewebe
<b>Getestete Reaktivität:</b> Human	<b>IF :</b> SH-SY5Y-Zellen, humanes Tonsillitisgewebe
<b>Zitierte Arten:</b> Human	

**Hinweis-IHC: Antigenmaskierung mit TE-Puffer pH 9,0 empfohlen. (\*) Wahlweise kann die Antigenmaskierung auch mit Citratpuffer pH 6,0 erfolgen.**

## Hintergrundinformationen

Fascin is a highly conserved and ubiquitous actin cross-linking protein that has a major function in cell motility and adhesion. Fascin localizes to a number of highly dynamic cellular structures that require strong mechanical support which include stress fibers and cellular protrusions such as microvilli, microspikes and lamellipodia. Fascin is up-regulated in many human carcinomas. It's a marker for Reed-Sternberg cells in Hodgkin's disease; it is also a highly selective marker for dendritic cells of lymphoid tissues.

## Bemerkenswerte Veröffentlichungen

Verfasser	Pubmed ID	Journal	Anwendung
Ivan Ramirez	33641240	Cytoskeleton (Hoboken)	WB
Leiyu Hao	33458919	Cell Prolif	WB,IF,IHC

## Lagerung

**Lagerungsbedingungen:**  
Bei -20°C lagern. Nach dem Versand ein Jahr lang stabil

**Lagerungspuffer:**  
PBS mit 0.02% Natriumazid und 50% Glycerin pH 7.3.

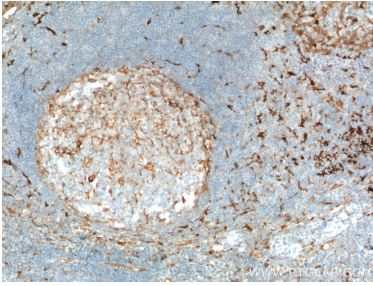
Aliquotieren ist nicht notwendig bei -20°C Lagerung

\*\*\* 20ul-Größen enthalten 0.1% BSA

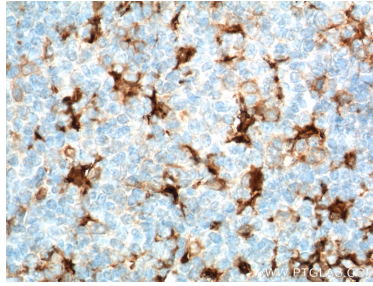
For technical support and original validation data for this product please contact:  
T: 1 (888) 4PTGLAB (1-888-478-4522) (toll free in USA), or 1(312) 455-8498 (outside USA)  
E: proteintech@ptglab.com  
W: ptglab.com

This product is exclusively available under Proteintech Group brand and is not available to purchase from any other manufacturer.

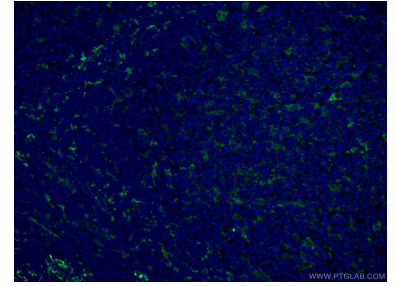
## Ausgewählte Validierungsdaten



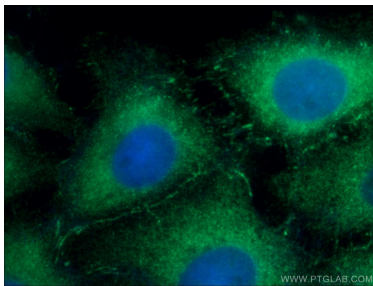
Immunohistochemical analysis of paraffin-embedded human tonsillitis tissue slide using 66321-1-Ig (Fascin Antibody) at dilution of 1:600 (under 10x lens). Heat mediated antigen retrieval with Tris-EDTA buffer (pH 9.0).



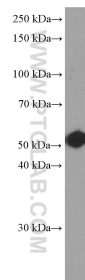
Immunohistochemical analysis of paraffin-embedded human tonsillitis tissue slide using 66321-1-Ig (Fascin Antibody) at dilution of 1:600 (under 40x lens). Heat mediated antigen retrieval with Tris-EDTA buffer (pH 9.0).



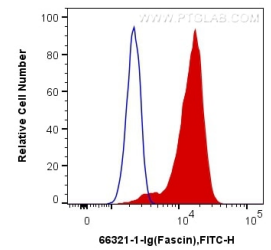
Immunofluorescent analysis of (4% PFA) fixed human tonsillitis tissue using 66321-1-Ig (Fascin antibody) at dilution of 1:100 and CoraLite488-Conjugated AffiniPure Goat Anti-Mouse IgG(H+L).



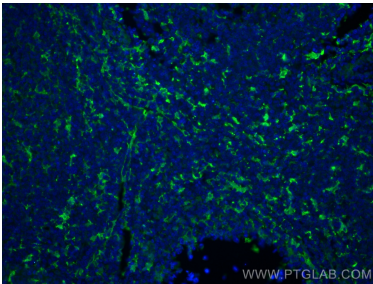
Immunofluorescent analysis of (-20°C Ethanol) fixed SH-SY5Y cells using 66321-1-Ig(Fascin antibody) at dilution of 1:50 and Alexa Fluor 488-conjugated AffiniPure Goat Anti-Mouse IgG(H+L).



SH-SY5Y cells were subjected to SDS PAGE followed by western blot with 66321-1-Ig (Fascin Antibody) at dilution of 1:2000 incubated at room temperature for 1.5 hours.



$1 \times 10^6$  SH-SY5Y cells were intracellularly stained with 0.2  $\mu$ g Anti-Human Fascin (66321-1-Ig, Clone:1B5G3) and CoraLite@488-Conjugated AffiniPure Goat Anti-Mouse IgG(H+L) at dilution 1:1000 (red), or 0.2  $\mu$ g Control Antibody. Cells were fixed with 4% PFA and permeabilized with Flow Cytometry Perm Buffer (PF00011-C).



Immunofluorescent analysis of (4% PFA) fixed human tonsillitis tissue using Fascin antibody (66321-1-Ig, Clone: 1B5G3) at dilution of 1:400 and CoraLite@488-Conjugated AffiniPure Goat Anti-Mouse IgG(H+L).