

Allgemeine Informationen

Katalog-Nr.: 66330-1-Ig	GenBank-Zugangsnummer: BC031010	Reinigungsmethode: Protein-G-Reinigung
Größe: 150ul , Konzentration: 1700 µg/ml von64754 Nanodrop und 1000 µg/ml durch die Bradford-Methode mit BSA als Standard;	GeneID (NCBI): von64754	CloneNo.: 1B5C10
Wirt: Maus	Vollständiger Name: SET and MYND domain containing 3	Empfohlene Verdünnungen: WB 1:500-1:2000 IHC 1:50-1:500 IF 1:200-1:800
Isotyp: IgG1	Berechnete Masse: 428aa,49 kDa; 369aa,42 kDa	
Immunogen Katalognummer: AG2624	Beobachtete Masse: 49 kDa	

Anwendungen

Geprüfte Anwendungen: IF, IHC, WB, ELISA	Positivkontrollen:
Getestete Reaktivität: Human	WB : A431-Zellen, COLO 320-Zellen, HEK-293-Zellen, MCF-7-Zellen
Hinweis-IHC: Antigenmaskierung mit TE-Puffer pH 9,0 empfohlen. (*) Wahlweise kann die Antigenmaskierung auch mit Citratpuffer pH 6,0 erfolgen.	IHC : humanes Pankreaskarzinomgewebe, humanes Leberkarzinomgewebe
	IF : MCF-7-Zellen,

Hintergrundinformationen

SMYD3, also name as ZMYND1 and ZNFN3A1, belongs to the histone-lysine methyltransferase family. It is a histone methyltransferase that plays an important role in transcriptional regulation in human carcinogenesis. It can specifically methylate histone H3 at lysine 4 and activate the transcription of a set of downstream genes, including several oncogenes (e.g., N-myc, Crkl, Wnt10b, RIZ and hTERT) and genes involved in the control of cell cycle. (PMID: 20957523). It plays an important role in transcriptional activation as a member of an RNA polymerase complex. SMYD3 is frequently overexpressed in different types of cancer cells. It functions as a coactivator of Era and potentiates Era activity in response to ligand. SMYD3 as a new coactivator for ER-mediated transcription, providing a possible link between SMYD3 overexpression and breast cancer. (PMID: 19509295) The common variable number of tandem repeats polymorphism in SMYD3 is a susceptibility factor for some types of human cancer (PMID:16155568). Mainly cytoplasmic when cells are arrested at G0/G1, accumulates in the nucleus at S phase and G2/M (UniProt).

Lagerung

Lagerungsbedingungen:
Bei -20°C lagern. Nach dem Versand ein Jahr lang stabil
Lagerungspuffer:
PBS mit 0.02% Natriumazid und 50% Glycerin pH 7.3.
Aliquotieren ist nicht notwendig bei -20°C Lagerung

*** 20ul-Größen enthalten 0.1% BSA

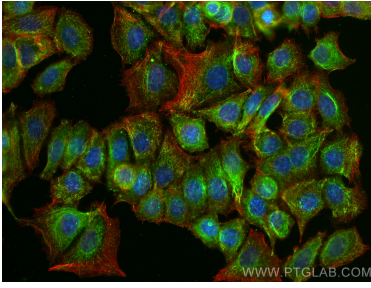
For technical support and original validation data for this product please contact:

T: 1 (888) 4PTGLAB (1-888-478-4522) (toll free
in USA), or 1(312) 455-8498 (outside USA)

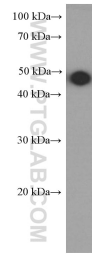
E: proteintech@ptglab.com
W: ptglab.com

This product is exclusively available under Proteintech Group brand and is not available to purchase from any other manufacturer.

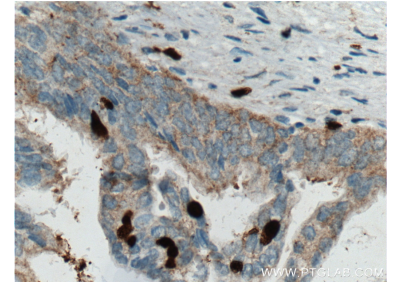
Ausgewählte Validierungsdaten



Immunofluorescent analysis of (-20°C Ethanol) fixed MCF-7 cells using SMYD3 antibody (66330-1-Ig, Clone: 1B5C10) at dilution of 1:400 and CoraLite®488-Conjugated AffiniPure Goat Anti-Mouse IgG(H+L), (CL594-Phalloidin, red).



A431 cells were subjected to SDS PAGE followed by western blot with 66330-1-Ig (SMYD3 Antibody) at dilution of 1:1000 incubated at room temperature for 1.5 hours.



Immunohistochemical analysis of paraffin-embedded human pancreas cancer tissue slide using 66330-1-Ig (SMYD3 Antibody) at dilution of 1:200 (under 40x lens). Heat mediated antigen retrieval with Tris-EDTA buffer (pH 9.0).