

Nur für Forschungszwecke

IGSF2 Monoklonaler Antikörper

Katalog-Nr.:66333-1-Ig



Allgemeine Informationen

Katalog-Nr.: 66333-1-Ig	GenBank-Zugangsnummer: BC136484	Reinigungsmethode: Protein-G-Reinigung
Größe: 150ul, Konzentration: 1300 µg/ml von9398 Nanodrop und 1000 µg/ml durch die Bradford-Methode mit BSA als Standard;	GeneID (NCBI): 150000000	CloneNo.: 1E6A7
Wirt: Maus	Vollständiger Name: immunoglobulin superfamily, member 2	Empfohlene Verdünnungen: WB 1:500-1:2000 IHC 1:50-1:500
Isotyp: IgG1	Beobachtete Masse: 120 kDa	
Immunogen Katalognummer: AG23297		

Anwendungen

Geprüfte Anwendungen: FC, IHC, WB, ELISA	Positivkontrollen: WB : RAW 264.7-Zellen, IHC : humanes Lungenkarzinomgewebe,
Getestete Reaktivität: Human, Maus	
Hinweis-IHC: Antigendemaskierung mit TE-Puffer pH 9,0 empfohlen. (*) Wahlweise kann die Antigendemaskierung auch mit Citratpuffer pH 6,0 erfolgen.	

Hintergrundinformationen

IGSF2, also known as CD101, is a low abundance protein. Expression of CD101 is found on monocytes, granulocytes and dendritic cells. In addition expression on T lymphocytes is important for cell activation. It plays a role as inhibitor of T-cells proliferation induced by CD3 and inhibits expression of IL2RA on activated T-cells and secretion of IL2.

Lagerung

Lagerungsbedingungen:
Bei -20°C lagern. Nach dem Versand ein Jahr lang stabil
Lagerungspuffer:
PBS mit 0.02% Natriumazid und 50% Glycerin pH 7.3.
Aliquotieren ist nicht notwendig bei -20°C Lagerung

*** 20ul-Größen enthalten 0.1% BSA

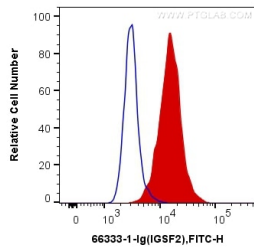
For technical support and original validation data for this product please contact:

T: 1 (888) 4PTGLAB (1-888-478-4522) (toll free in USA), or 1(312) 455-8498 (outside USA)

E: proteintech@ptglab.com
W: ptglab.com

This product is exclusively available under Proteintech Group brand and is not available to purchase from any other manufacturer.

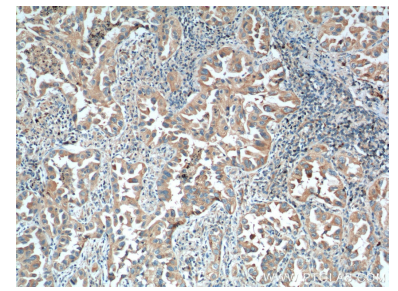
Ausgewählte Validierungsdaten



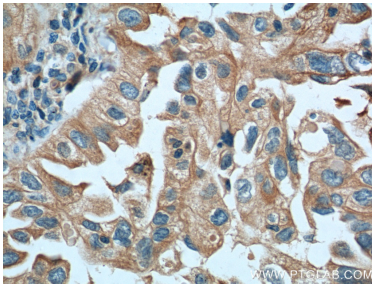
1X10⁶ RAW 264.7 cells were intracellularly stained with 0.2 ug Anti-Human IGSF2 (66333-1-Ig, Clone:1E6A7) and CoralLite®488-Conjugated AffiniPure Goat Anti-Mouse IgG(H+L) at dilution 1:1000 (red), or 0.2 ug Mouse IgG1 Isotype Control (66360-1-Ig, Clone: T1F8D3F10) (blue). Cells were fixed with 4% PFA and permeabilized with Flow Cytometry Perm Buffer (PF00011-C).



RAW 264.7 cells were subjected to SDS PAGE followed by western blot with 66333-1-Ig (IGSF2 Antibody) at dilution of 1:1000 incubated at room temperature for 1.5 hours.



Immunohistochemical analysis of paraffin-embedded human lung cancer tissue slide using 66333-1-Ig (IGSF2 Antibody) at dilution of 1:200 (under 10x lens). Heat mediated antigen retrieval with Tris-EDTA buffer (pH 9.0).



Immunohistochemical analysis of paraffin-embedded human lung cancer tissue slide using 66333-1-Ig (IGSF2 Antibody) at dilution of 1:200 (under 40x lens). Heat mediated antigen retrieval with Tris-EDTA buffer (pH 9.0).