

## Allgemeine Informationen

<b>Katalog-Nr.:</b> 66338-1-Ig	<b>GenBank-Zugangsnummer:</b> BC074869	<b>Reinigungsmethode:</b> Protein-A-Reinigung
<b>Größe:</b> 150ul , Konzentration: 1000 µg/ml durch die Bradford-Methode mit BSA als Standard;	<b>GeneID (NCBI):</b> 4314	<b>CloneNo.:</b> 1F5A9
<b>Wirt:</b> Maus	<b>Vollständiger Name:</b> matrix metalloproteinase 3 (stromelysin 1, progelatinase)	<b>Empfohlene Verdünnungen:</b> WB 1:5000-1:50000 IHC 1:500-1:2000
<b>Isotyp:</b> IgG1	<b>Berechnete Masse:</b> 477 aa, 54 kDa	
<b>Immunogen Katalognummer:</b> AG12359	<b>Beobachtete Masse:</b> 45-60 kDa	

## Anwendungen

## Geprüfte Anwendungen:

IHC, WB, ELISA

## In Publikationen genannte Anwendungen:

IF, IHC, WB

## Getestete Reaktivität:

Hausschwein, Human, Maus, Ratte

## Zitierte Arten:

Hausschwein, Human, Maus, Ratte

**Hinweis-IHC: Antigenmaskierung mit TE-Puffer pH 9,0 empfohlen. (\*) Wahlweise kann die Antigenmaskierung auch mit Citratpuffer pH 6,0 erfolgen.**

## Positivkontrollen:

**WB** : PC-12-Zellen, Caco-2-Zellen, COLO 320-Zellen, fetales humanes Hirngewebe, Hausschwein-Herzgewebe, Hausschwein-Hirngewebe, HeLa-Zellen, humanes Herzgewebe, Maushirngewebe, Rattenhirngewebe

**IHC** : humanes Mammakarzinomgewebe, humanes Kolonkarzinomgewebe, Maus-Kolongewebe, Ratten-Kolongewebe

## Hintergrundinformationen

Matrix metalloproteinases (MMPs) play a critically important role in extracellular matrix remodeling and have been implicated in a number of key normal and pathologic processes. These proteases have come to represent important therapeutic and diagnostic targets for the treatment and detection of human cancers. MMP-3 activate procollagenase via two pathways: slow direct activation and rapid activation in conjunction with tissue or plasma proteinases. The pro-MMP3 (60 kDa) and the active MMP3 (47 kDa) can be detected through western blot.

## Bemerkenswerte Veröffentlichungen

Verfasser	Pubmed ID	Journal	Anwendung
Wenbin Pei	34650433	Front Pharmacol	WB
Weichao Sun	36102306	Int J Mol Med	WB,IHC,IF
Xin Liu	32914937	J Cell Mol Med	WB

## Lagerung

## Lagerungsbedingungen:

Bei -20°C lagern. Nach dem Versand ein Jahr lang stabil

## Lagerungspuffer:

PBS mit 0.02% Natriumazid und 50% Glycerin pH 7.3.

Aliquotieren ist nicht notwendig bei -20°C Lagerung

\*\*\* 20ul-Größen enthalten 0.1% BSA

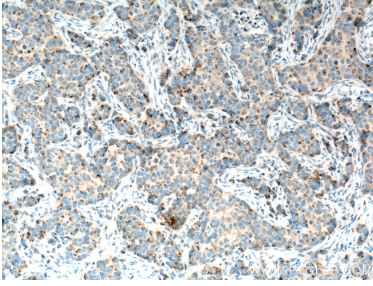
For technical support and original validation data for this product please contact:

T: 1 (888) 4PTGLAB (1-888-478-4522) (toll free in USA), or 1(312) 455-8498 (outside USA)

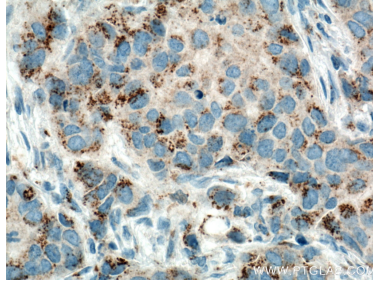
E: [proteintech@ptglab.com](mailto:proteintech@ptglab.com)  
W: [ptglab.com](http://ptglab.com)

**This product is exclusively available under Proteintech Group brand and is not available to purchase from any other manufacturer.**

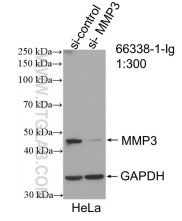
## Ausgewählte Validierungsdaten



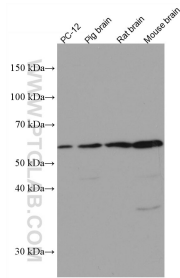
Immunohistochemical analysis of paraffin-embedded human breast cancer tissue slide using 66338-1-Ig (MMP3 antibody) at dilution of 1:4000 (under 10x lens. Heat mediated antigen retrieval with Tris-EDTA buffer (pH 9.0).



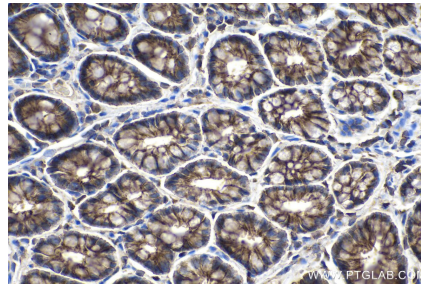
Immunohistochemical analysis of paraffin-embedded human breast cancer tissue slide using 66338-1-Ig (MMP3 antibody) at dilution of 1:4000 (under 40x lens. Heat mediated antigen retrieval with Tris-EDTA buffer (pH 9.0).



WB result of MMP3 antibody (66338-1-Ig; 1:300; incubated at room temperature for 1.5 hours) with sh-Control and sh-MMP3 transfected HeLa cells.



Various lysates were subjected to SDS PAGE followed by western blot with 66338-1-Ig (MMP3 antibody) at dilution of 1:10000 incubated at room temperature for 1.5 hours.



Immunohistochemical analysis of paraffin-embedded rat colon tissue slide using 66338-1-Ig (MMP3 antibody) at dilution of 1:4000 (under 40x lens). Heat mediated antigen retrieval with Tris-EDTA buffer (pH 9.0).