

Nur für Forschungszwecke

BCL6 Monoklonaler Antikörper

Katalog-Nr.: 66340-1-Ig **5 Publikationen**



Allgemeine Informationen

| | | |
|---------------------------------------------------------------------------------------------------------------------------------------------|-----------------------------------------------------------------------|---------------------------------------------------------------------------|
| Katalog-Nr.: 66340-1-Ig | GenBank-Zugangsnummer: BC150184 | Reinigungsmethode: Protein-A-Reinigung |
| Größe: 150ul, Konzentration: 1580 µg/ml von 604 Nanodrop und 1000 µg/ml durch die Bradford-Methode mit BSA als Standard; | GeneID (NCBI): Vollständiger Name: B-cell CLL/lymphoma 6 | CloneNo.: 1E6B1 |
| Wirt: Maus | Berechnete Masse: 706 aa, 79 kDa | Empfohlene Verdünnungen: WB 1:5000-1:50000 IHC 1:1000-1:2000 |
| Isotyp: IgG1 | Beobachtete Masse: 85 kDa | |
| Immunogen Katalognummer: AG15519 | | |

Anwendungen

| | |
|----------------------------------------------------------|---------------------------------------------------------------------------------------------------------------|
| Geprüfte Anwendungen: FC, IHC, WB, ELISA | Positivkontrollen: WB : Daudi-Zellen, Raji-Zellen, Ramos-Zellen IHC : humanes Tonsillitisgewebe, |
| In Publikationen genannte Anwendungen: IF, IHC | |
| Getestete Reaktivität: Human | |
| Zitierte Arten: Human, Maus | |

Hinweis-IHC: Antigenmaskierung mit TE-Puffer pH 9,0 empfohlen. (*) Wahlweise kann die Antigenmaskierung auch mit Citratpuffer pH 6,0 erfolgen.

Hintergrundinformationen

BCL6, a zinc finger transcription factor, contains an N-terminal BTB/POZ domain and C-terminal zinc finger DNA-binding motifs and represses transcription of a wide range of target proteins and microRNAs. BCL6 protein has been reported as a master regulator of B lymphocyte development and growth, and altered BCL6 protein expression was implicated in pathogenesis of diverse human hematologic malignancies, especially in the diffuse large B cell lymphoma (DLBCL). BCL6 is required for the development of T follicular helper T cells (TFH), a helper T cell subset required for the formation of mature and productive GCs. BCL6 has also been shown to play important regulatory roles in macrophages. This antibody only recognize human species.

Bemerkenswerte Veröffentlichungen

| Verfasser | Pubmed ID | Journal | Anwendung |
|------------------|-----------|---------------|-----------|
| Johannes Griss | 31519915 | Nat Commun | IF |
| Franziska Werner | 34248957 | Front Immunol | IHC IF |
| Zhou Qi | 35875161 | Front Oncol | IHC |

Lagerung

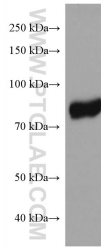
Lagerungsbedingungen:
Bei -20°C lagern. Nach dem Versand ein Jahr lang stabil
Lagerungspuffer:
PBS mit 0.02% Natriumazid und 50% Glycerin pH 7.3.
Aliquotieren ist nicht notwendig bei -20°C Lagerung

*** 20ul-Größen enthalten 0.1% BSA

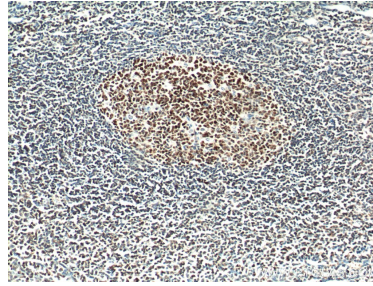
For technical support and original validation data for this product please contact:
T: 1 (888) 4PTGLAB (1-888-478-4522) (toll free in USA), or 1(312) 455-8498 (outside USA)
E: proteintech@ptglab.com
W: ptglab.com

This product is exclusively available under Proteintech Group brand and is not available to purchase from any other manufacturer.

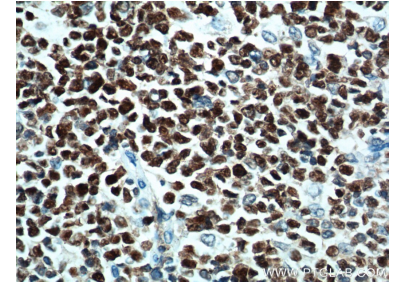
Ausgewählte Validierungsdaten



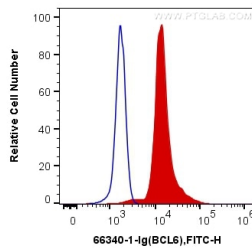
Daudi cells were subjected to SDS PAGE followed by western blot with 66340-1-Ig (BCL6 antibody) at dilution of 1:15000 incubated at room temperature for 1.5 hours.



Immunohistochemical analysis of paraffin-embedded human tonsillitis tissue slide using 66340-1-Ig (BCL6 Antibody) at dilution of 1:1000 (under 10x lens). Heat mediated antigen retrieved with Tris-EDTA buffer (pH9). The signal was enhanced by soaking the slide in 1% CuSO₄ for 10 minutes after DAB development.



Immunohistochemical analysis of paraffin-embedded human tonsillitis tissue slide using 66340-1-Ig (BCL6 Antibody) at dilution of 1:1000 (under 40x lens). Heat mediated antigen retrieved with Tris-EDTA buffer (pH9). The signal was enhanced by soaking the slide in 1% CuSO₄ for 10 minutes after DAB development.



1X10⁶ Jurkat cells were intracellularly stained with 0.2 ug Anti-Human BCL6 (66340-1-Ig, Clone:1E6B1) and CoraLite®488-Conjugated AffiniPure Goat Anti-Mouse IgG(H+L) at dilution 1:1000 (red), or 0.2 ug Mouse IgG1 Isotype Control (66360-1-Ig, Clone: T1F8D3F10) (blue). Cells were fixed and permeabilized with Transcription Factor Staining Buffer Kit (PF00011).