

Nur für Forschungszwecke

Annexin A1 Monoklonaler Antikörper



Katalog-Nr.:66344-1-Ig

Vorgestelltes Produkt

3 Publikationen

Allgemeine Informationen

Katalog-Nr.: 66344-1-Ig	GenBank-Zugangsnummer: BC001275	Reinigungsmethode: Protein-A-Reinigung
Größe: 150ul , Konzentration: 1100 µg/ml von301 Nanodrop und 1000 µg/ml durch die Bradford-Methode mit BSA als Standard;	GeneID (NCBI): annexin A1	CloneNo.: 1E1B7
Wirt: Maus	Vollständiger Name: annexin A1	Empfohlene Verdünnungen: WB 1:5000-1:50000 IHC 1:50-1:500 IF 1:50-1:500
Isotyp: IgG1	Berechnete Masse: 346 aa, 39 kDa	
Immunogen Katalognummer: AG17273	Beobachtete Masse: 35 kDa	

Anwendungen

Geprüfte Anwendungen: FC, IF, IHC, WB, ELISA	Positivkontrollen: WB : A549-Zellen, 4T1-Zellen, A431-Zellen, HCT 116-Zellen, HeLa-Zellen, HepG2-Zellen, Jurkat-Zellen, K-562-Zellen, NIH/3T3-Zellen
In Publikationen genannte Anwendungen: IF, IHC	IHC : humanes Magengewebe, humanes Pankreasgewebe, Mausebergewebe
Getestete Reaktivität: Human, Maus, Ratte	IF : A549-Zellen,
Zitierte Arten: Human	
Hinweis-IHC: Antigenmaskierung mit TE-Puffer pH 9,0 empfohlen. (*) Wahlweise kann die Antigenmaskierung auch mit Citratpuffer pH 6,0 erfolgen.	

Hintergrundinformationen

ANXA1, also named as ANX1, LPC1 and p35, belongs to the annexin family. It is a member of the annexin family of Ca²⁺-binding and phospholipidbinding proteins, and it is particularly abundant in various populations of peripheral blood leukocytes. ANXA1 regulates phospholipase A2 activity. It seems to bind from two to four calcium ions with high affinity. ANXA1 is a pleiotropic protein produced by many cell types including peripheral blood leucocytes.

Bemerkenswerte Veröffentlichungen

Verfasser	Pubmed ID	Journal	Anwendung
Emna Ouni	35341935	Matrix Biol	IF
Bin Yan	35775939	J Mater Chem B	IHC
Maria Fankhaenel	36631478	Nat Commun	IF

Lagerung

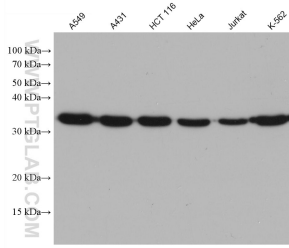
Lagerungsbedingungen:
Bei -20°C lagern. Nach dem Versand ein Jahr lang stabil
Lagerungspuffer:
PBS mit 0.02% Natriumazid und 50% Glycerin pH 7.3.
Aliquotieren ist nicht notwendig bei -20°C Lagerung

*** 20ul-Größen enthalten 0.1% BSA

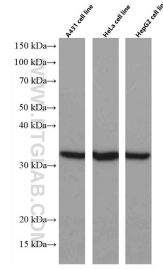
For technical support and original validation data for this product please contact:
T: 1 (888) 4PTGLAB (1-888-478-4522) (toll free in USA), or 1(312) 455-8498 (outside USA)
E: proteintech@ptglab.com
W: ptglab.com

This product is exclusively available under Proteintech Group brand and is not available to purchase from any other manufacturer.

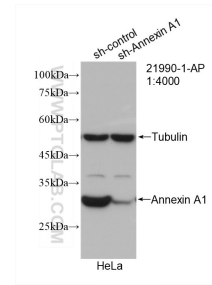
Ausgewählte Validierungsdaten



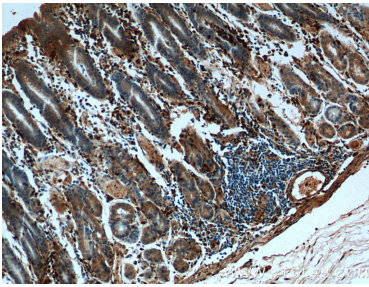
Various lysates were subjected to SDS PAGE followed by western blot with 66344-1-Ig (Annexin A1 antibody) at dilution of 1:20000 incubated at room temperature for 1.5 hours.



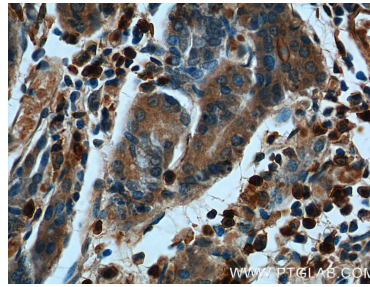
Various lysates were subjected to SDS PAGE followed by western blot with 66344-1-Ig (Annexin A1 antibody) at dilution of 1:5000 incubated at room temperature for 1.5 hours.



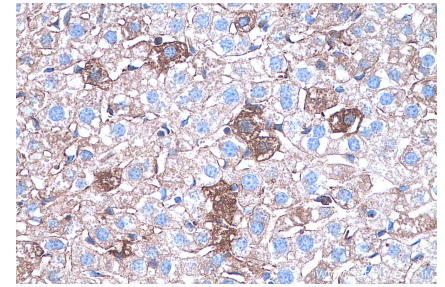
WB result of Annexin A1 antibody (66344-1-Ig; 1:3000; incubated at room temperature for 1.5 hours) with sh-Control and sh-Annexin A1 transfected HeLa cells.



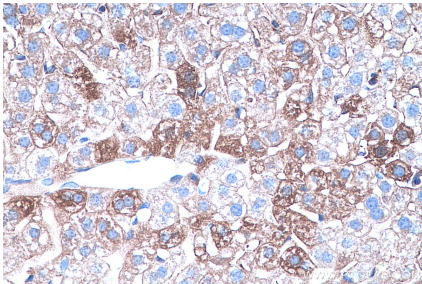
Immunohistochemical analysis of paraffin-embedded human stomach tissue slide using 66344-1-Ig (Annexin A1 antibody at dilution of 1:200 (under 10x lens).



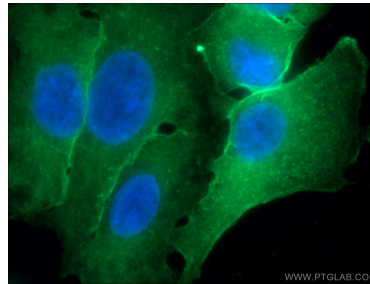
Immunohistochemical analysis of paraffin-embedded human stomach tissue slide using 66344-1-Ig (Annexin A1 antibody at dilution of 1:200 (under 40x lens).



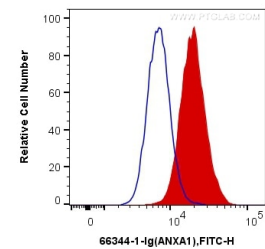
Immunohistochemical analysis of paraffin-embedded mouse liver tissue slide using 66344-1-Ig (Annexin A1 antibody) at dilution of 1:16000 (under 40x lens). Heat mediated antigen retrieval with Tris-EDTA buffer (pH 9.0).



Immunohistochemical analysis of paraffin-embedded mouse liver tissue slide using 66344-1-Ig (Annexin A1 antibody) at dilution of 1:16000 (under 40x lens). Heat mediated antigen retrieval with Tris-EDTA buffer (pH 9.0).



Immunofluorescent analysis of (-20°C Ethanol) fixed A549 cells using 66344-1-Ig(Annexin A1 antibody) at dilution of 1:100 and Alexa Fluor 488-conjugated AffiniPure Goat Anti-Mouse IgG(H+L).



1×10^6 K-562 cells were intracellularly stained with 0.8 ug Anti-Human Annexin A1 (66344-1-Ig, Clone:1E1B7) and CoraLite®488-Conjugated AffiniPure Goat Anti-Mouse IgG(H+L) at dilution 1:1000 (red), or 0.8 ug Mouse IgG1 Isotype Control (66360-1-Ig, Clone: T1F8D3F10) (blue). Cells were fixed with 4% PFA and permeabilized with Flow Cytometry Perm Buffer (PF00011-C).