

## Allgemeine Informationen

<b>Katalog-Nr.:</b> 66346-1-Ig	<b>GenBank-Zugangsnummer:</b> BC002651	<b>Reinigungsmethode:</b> Protein-G-Reinigung
<b>Größe:</b> 150ul , Konzentration: 1300 µg/ml von439 Nanodrop und 1000 µg/ml durch die Bradford-Methode mit BSA als Standard;	<b>GeneID (NCBI):</b> arsA arsenite transporter, ATP- binding, homolog 1 (bacterial)	<b>CloneNo.:</b> 1B7C11
<b>Wirt:</b> Maus	<b>Vollständiger Name:</b> arsA arsenite transporter, ATP- binding, homolog 1 (bacterial)	<b>Empfohlene Verdünnungen:</b> WB 1:500-1:2000 IHC 1:50-1:500 IF 1:200-1:800
<b>Isotyp:</b> IgG1	<b>Berechnete Masse:</b> 38.7 kDa	
<b>Immunogen Katalognummer:</b> AG7936	<b>Beobachtete Masse:</b> 37-41 kDa	

## Anwendungen

<b>Geprüfte Anwendungen:</b> IF, IHC, WB, ELISA	<b>Positivkontrollen:</b>
<b>Getestete Reaktivität:</b> Hausschwein, Human, Maus, Ratte	<b>WB :</b> Rattenhirngewebe, fetales humanes Hirngewebe, Hausschwein-Hirngewebe, HEK-293-Zellen, Neuro-2a- Zellen
<b>Hinweis-IHC: Antigendemaskierung mit TE- Puffer pH 9,0 empfohlen. (*) Wahlweise kann die Antigendemaskierung auch mit Citratpuffer pH 6,0 erfolgen.</b>	<b>IHC :</b> humanes Lungenkarzinomgewebe, <b>IF :</b> HEK-293-Zellen,

## Hintergrundinformationen

ASNA1 (also known as TRC40) is a highly conserved ATPase involved in efflux of arsenite and antimonite. Reduced ASNA1 expression is associated with significant inhibition of cell growth, increased apoptosis and increased sensitivity to arsenite. Thus ASNA1 is proposed to be a target to overcome resistance to cancer chemotherapy. In addition, ASNA1 has been identified as an ER targeting factor for tail-anchored proteins in the posttranslational membrane insertion pathway.

## Lagerung

**Lagerungsbedingungen:**  
Bei -20°C lagern. Nach dem Versand ein Jahr lang stabil  
**Lagerungspuffer:**  
PBS mit 0.02% Natriumazid und 50% Glycerin pH 7.3.  
**Aliquotieren ist nicht notwendig bei -20°C Lagerung**

\*\*\* 20ul-Größen enthalten 0.1% BSA

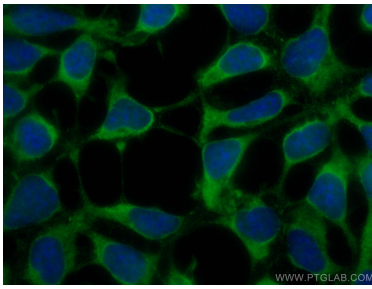
For technical support and original validation data for this product please contact:

T: 1 (888) 4PTGLAB (1-888-478-4522) (toll free  
in USA), or 1(312) 455-8498 (outside USA)

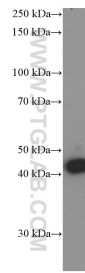
E: proteintech@ptglab.com  
W: ptglab.com

This product is exclusively available under Proteintech Group brand and is not available to purchase from any other manufacturer.

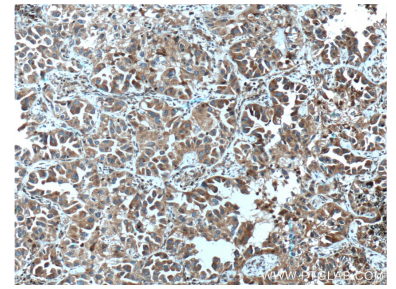
## Ausgewählte Validierungsdaten



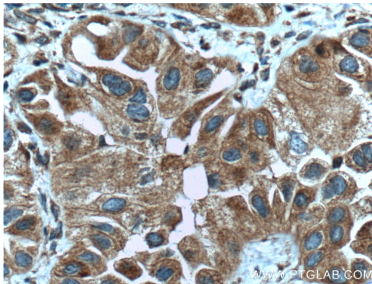
Immunofluorescent analysis of (-20°C Ethanol) fixed HEK-293 cells using ASNA1 antibody (66346-1-Ig, Clone: 1B7C11) at dilution of 1:400 and CoraLite®488-Conjugated AffiniPure Goat Anti-Mouse IgG(H+L).



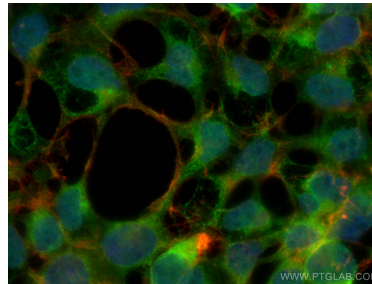
rat brain tissue were subjected to SDS PAGE followed by western blot with 66346-1-Ig (ASNA1 Antibody) at dilution of 1:1000 incubated at room temperature for 1.5 hours.



Immunohistochemical analysis of paraffin-embedded human lung cancer tissue slide using 66346-1-Ig (ASNA1 Antibody) at dilution of 1:200 (under 10x lens). Heat mediated antigen retrieval with Tris-EDTA buffer (pH 9.0).



Immunohistochemical analysis of paraffin-embedded human lung cancer tissue slide using 66346-1-Ig (ASNA1 Antibody) at dilution of 1:200 (under 40x lens). Heat mediated antigen retrieval with Tris-EDTA buffer (pH 9.0).



Immunofluorescent analysis of (4% PFA) fixed HEK-293 cells using ASNA1 antibody (66346-1-Ig, Clone: 1B7C11) at dilution of 1:400 and CoraLite®488-Conjugated AffiniPure Goat Anti-Mouse IgG(H+L), CL594-Phalloidin (red).